

mm-Wave Reference Guide

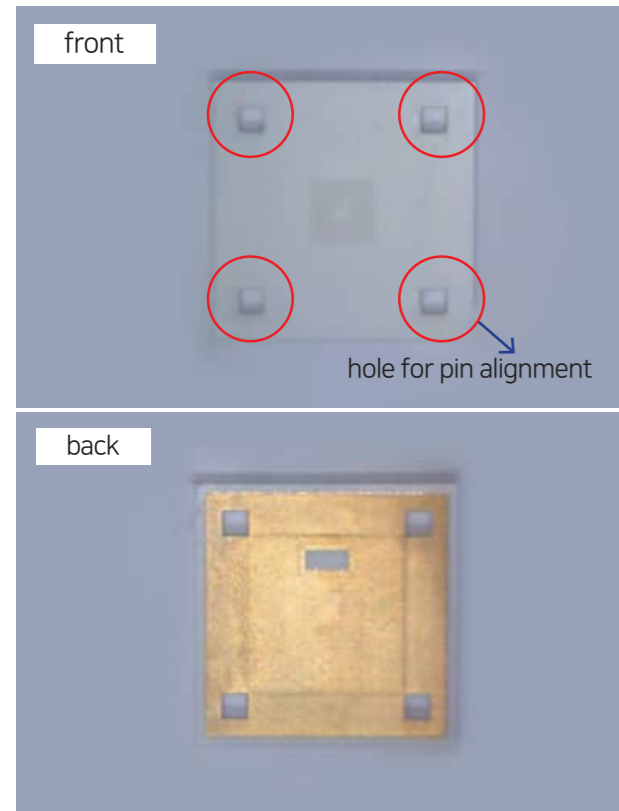


Fig. 3 photograph of proposed antenna with WR12 waveguide transition (total size : 12mm x 12mm)

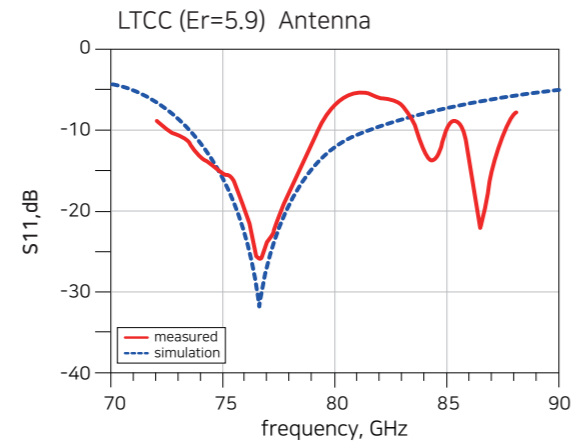


Fig. 4 Measured and simulated results of S11 of antenna

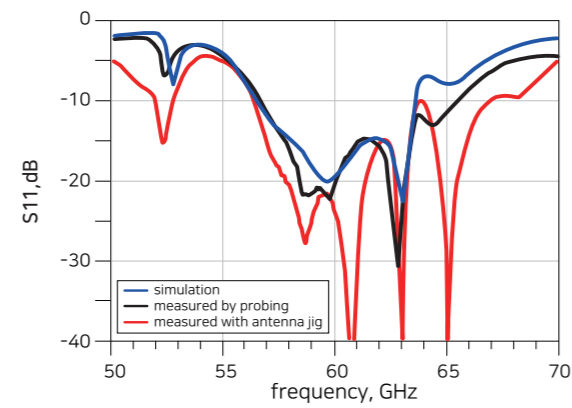
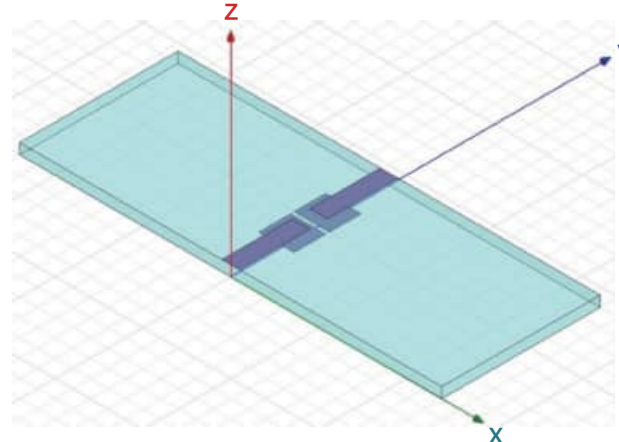
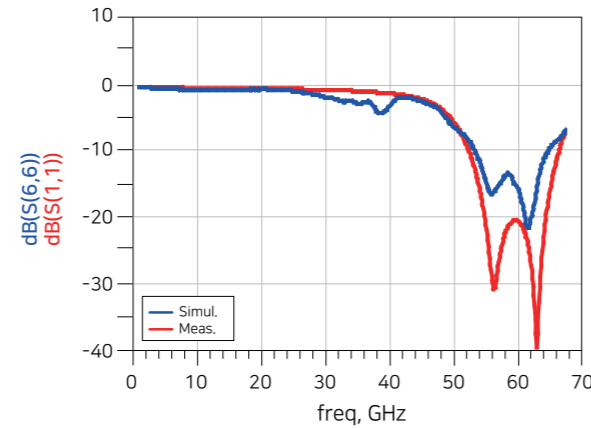
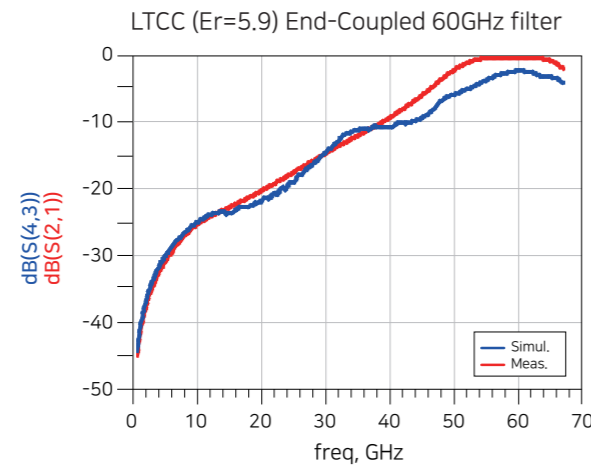


Fig. 3 Measured and simulated results of S11 of antenna



ITEMS	Simul.	Meas.
Insertion loss (dB)	-38.6	-20.5
10dB under return loss bandwidth (GHz)	13.5 (52.3~65.8)	10.75 (53.25~64)

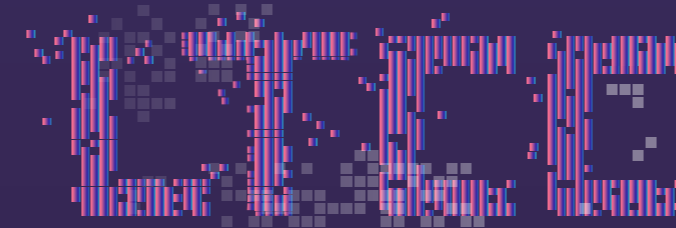


THE ONLY WAY TO 6G



Low Temperature Co-fired Ceramic

THE ONLY WAY TO 6G



Low Temperature Co-fired Ceramic



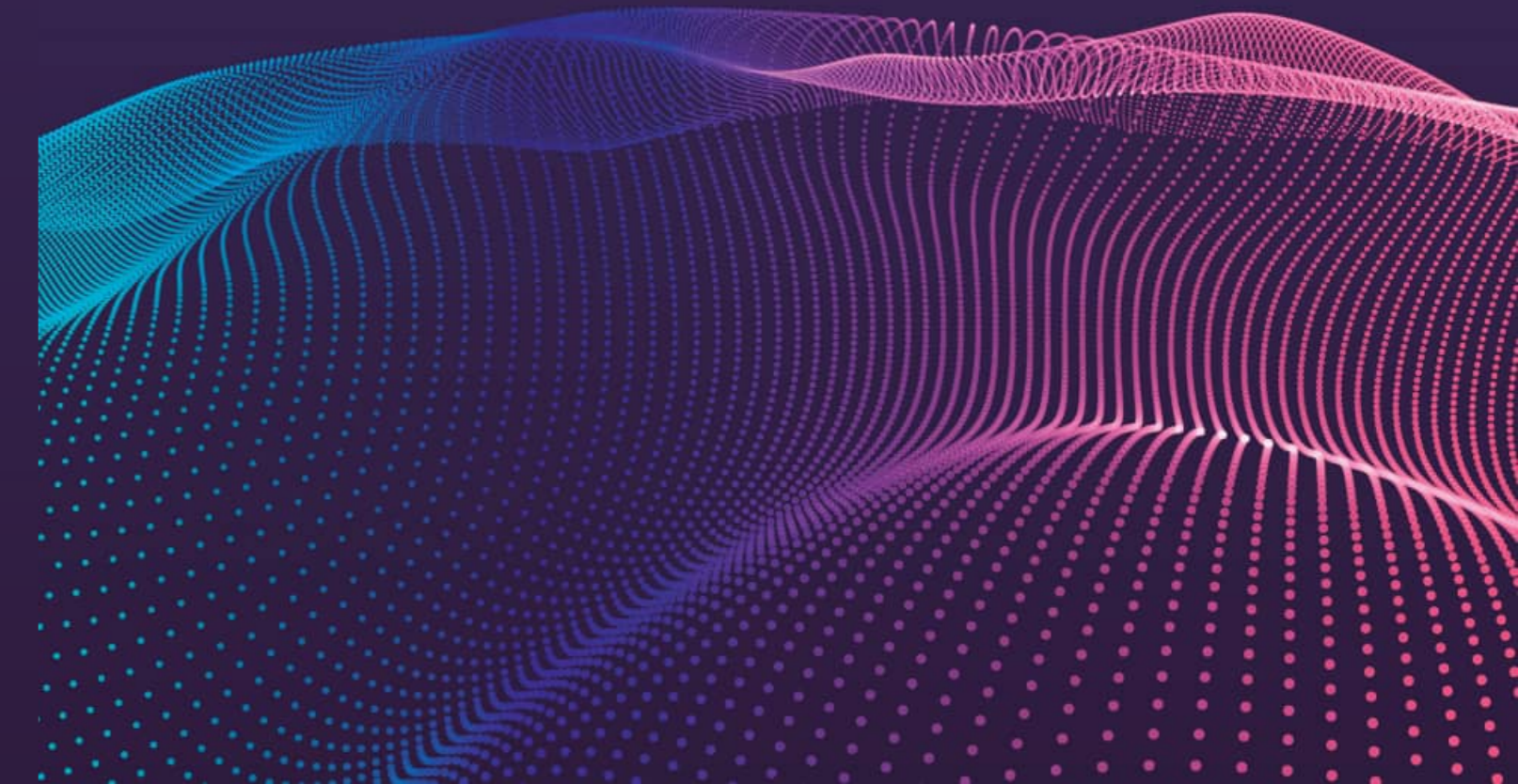
CEO Martin lee (yong@ytcera.com)

Sales sales@ytcera.com Tel +82-70-4148-6665

Production Headquarters / Research Institute

106-74 Gwahakdanji-ro, Gangneung-si, Gangwon-do, 25440, Korea

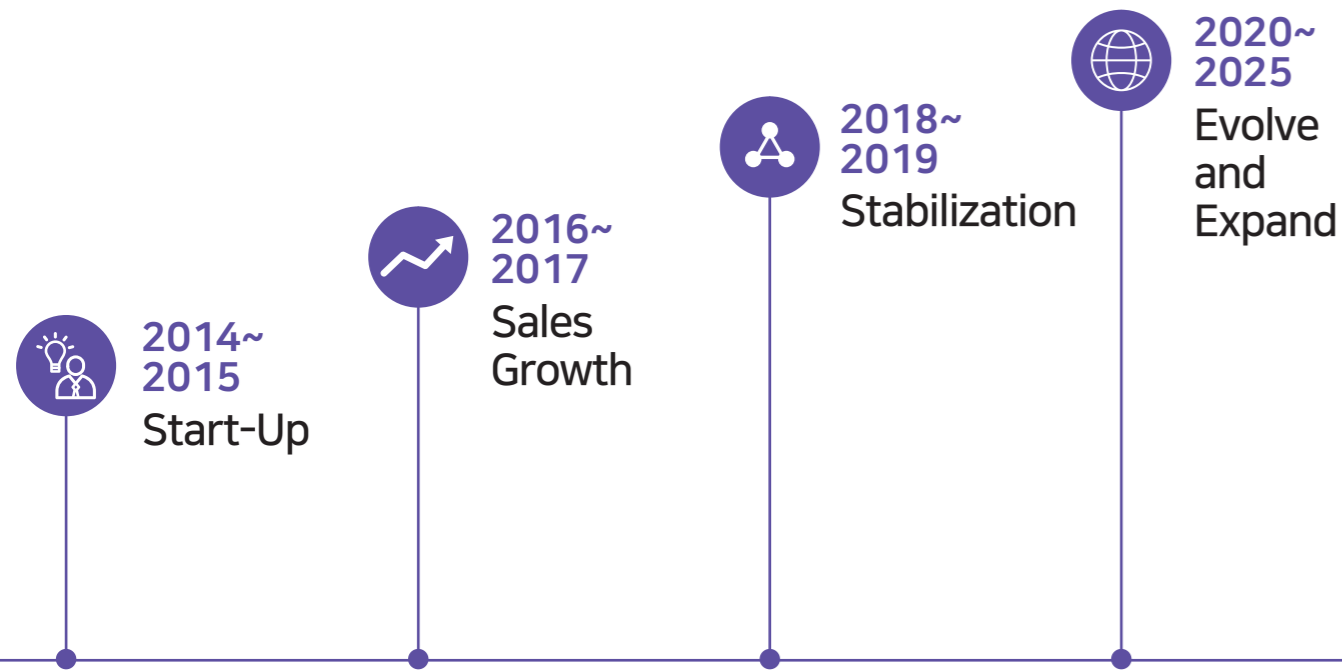
www.ytcera.co.kr





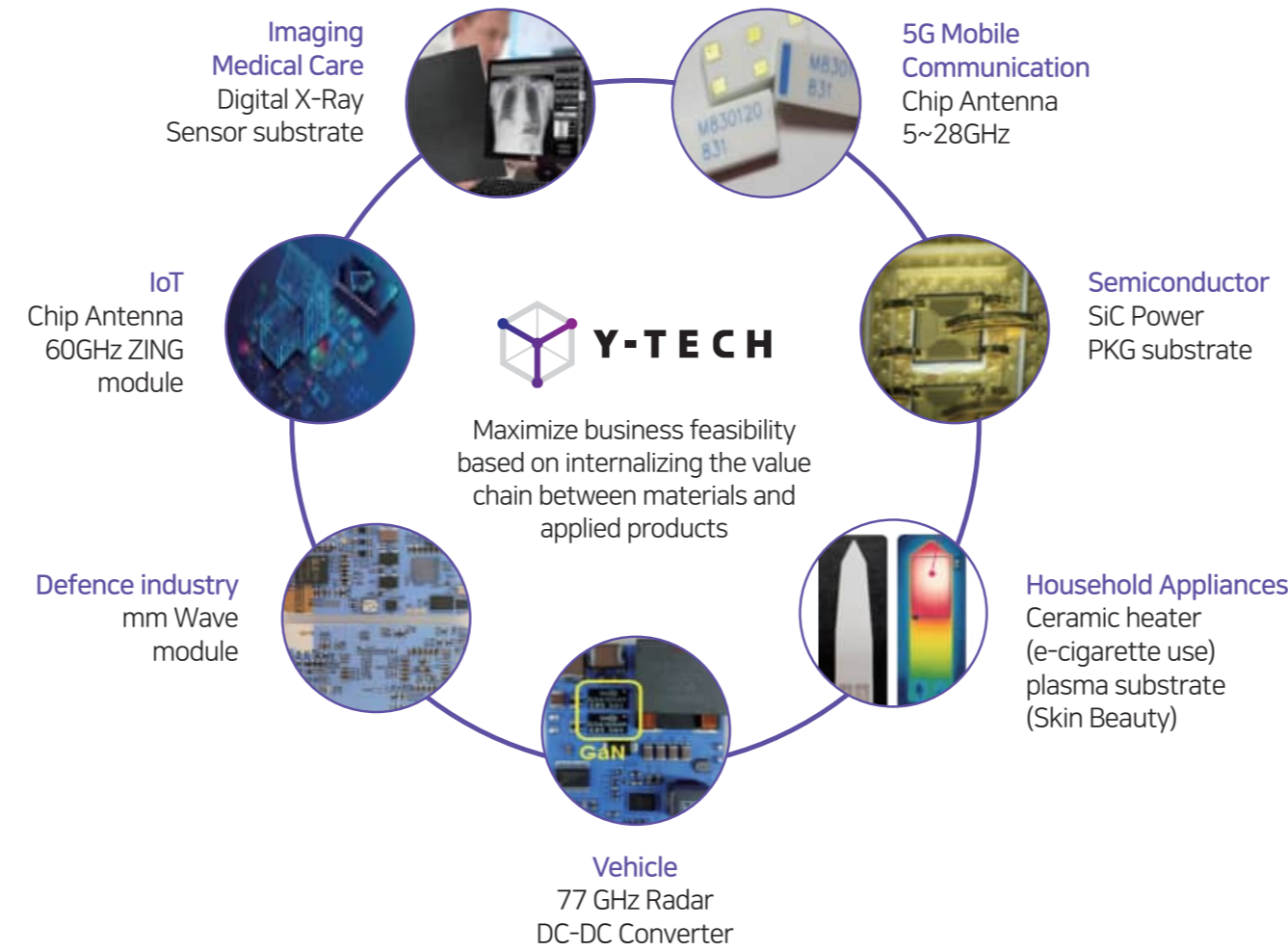
VISION

Global Small Giants in the Laminated Ceramic Parts(LTCC) Market 5G/6G Device Production Company

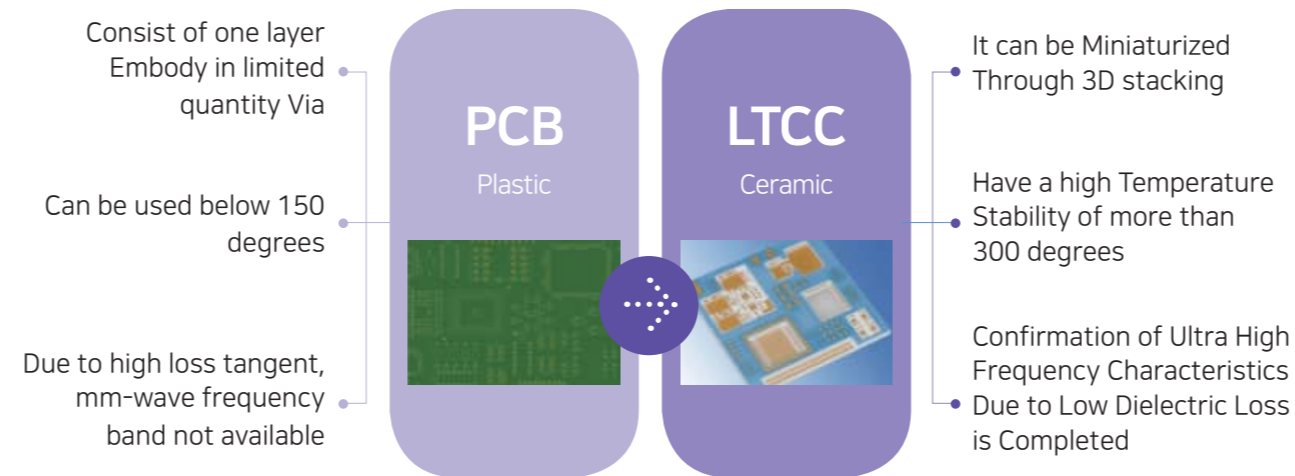


“ Y-TECH is a ceramic electronics company in the 4th Industrial Revolution. ”

Major Business ITEM

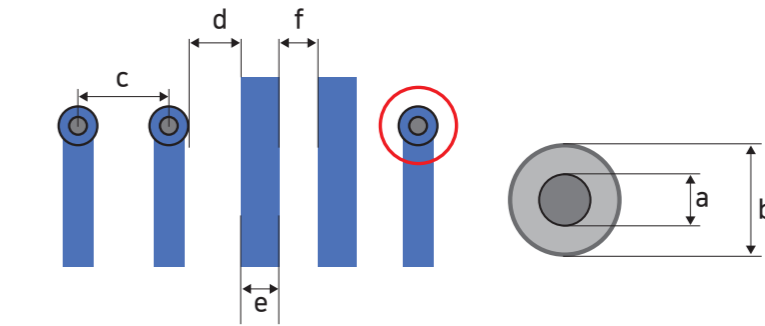


LTCC Competitiveness



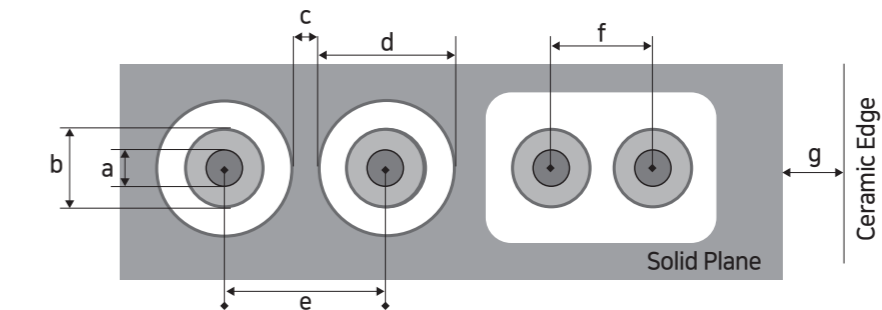
The paradigm of electronic components is changing from PCB circuits to ceramic materials that can be subminiature, mm-wave, and heat-resistant.

Y-TECH Design Guide



Unit : mm

ITEM	D140	D100	D70	D50
a. Via hole dia	0.140	0.100	0.070	0.050
b. Via cover dot dia	0.280	0.150	0.100	0.080
c. Via pitch	0.420	0.300	0.210	0.150
d. Via cover dot to line clearance	0.200	0.150	0.100	0.070
e. Line width	0.100	0.100	0.070	0.060
f. Line to line clearance	0.150	0.150	0.100	0.070



Unit : mm

ITEM	D140	D100	D70	D50
a. Via hole dia	0.140	0.100	0.070	0.050
b. Via cover dot dia (on plane)	0.280	0.150	0.100	0.080
c. Line width (on plane)	0.100	0.100	0.100	0.070
d. Clearance dia (on plane)	0.700	0.450	0.300	0.240
e. Via pitch (on plane)	0.760	0.600	0.400	0.310
f. Via pitch	0.420	0.300	0.210	0.150
g. Ceramic edge to pattern	1.500	1.500	1.500	1.500

Y-TECH has the same level of LTCC process technology as the world's leading company.