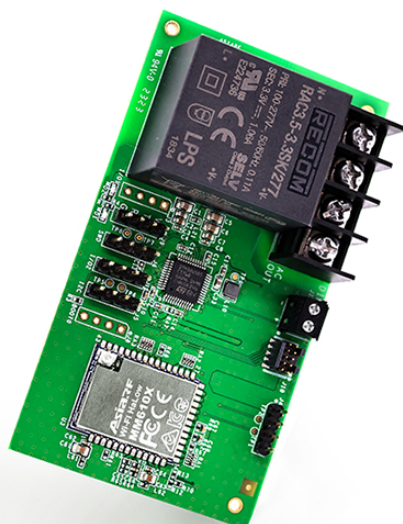


Wi-Fi HaLow DIY Kit

ARFHL-575

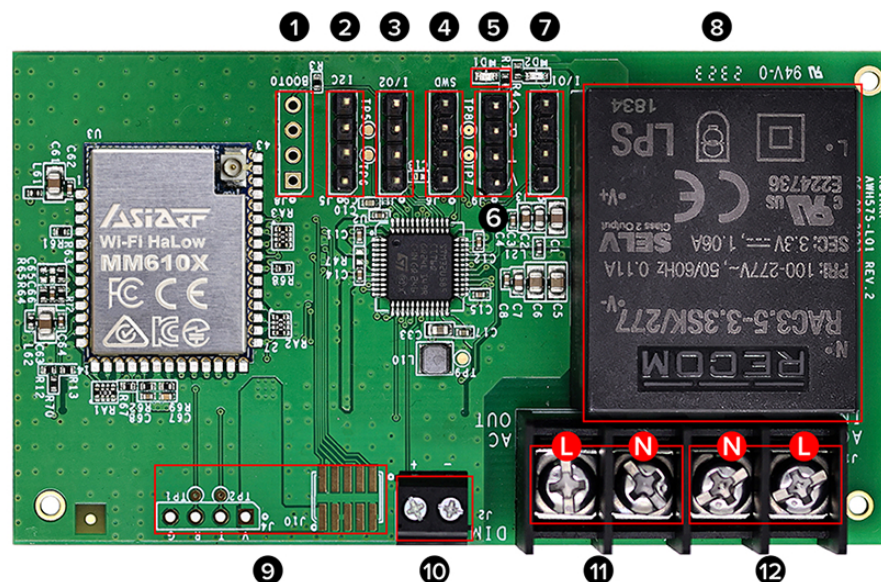


Unleash Your Creativity with Our Wi-Fi HaLow DIY Kit : Effortlessly Build Your Ideal IoT Solution.

- **Simple Connection via I²C:** Ensures effortless sensor expansion for seamless integration.
- **Efficient Communication:** The UART system streamlines data exchange, promoting efficient communication.
- **Effortless Device Integration:** Our design allows easy adjustment and simple device connection, with GPIOs versatile for various applications.
- **Maximizing Battery Life:** Under general application conditions, the battery can last for at least five years or more, providing convenience and reducing maintenance costs in remote or hard-to-reach areas.
- **Maximize Reach with HaLow:** Use Wi-Fi HaLow's long-range, high-capacity transmission for easy, far-reaching image and video sharing.
- **Smart Energy Saving:** The adaptive PWM function offers precise control, energy efficiency, and programmability.
- **Effortless Control:** Facilitates switching and dimming via PWM. The dimming/switch functions enhance a user-friendly and flexible control experience."



For more information, please visit
<https://www.asiarf.com/>
or scan the QR code



- | | |
|--------------------|-------------|
| 1 BOOT | 7 GPIO |
| 2 I ² C | 8 Converter |
| 3 GPIO | 9 Debug |
| 4 SWD | 10 PWM |
| 5 Power LED | 11 AC OUT |
| 6 UART Controller | 12 AC input |

Switch and Dimming by PWM