

PROBABLY THE BEST IOT TRACKING PLATFORM IN THE WORLD

EFFICIENCY. SECURITY. SAFETY.
THROUGH LOCATION AWARENESS.

Traxmate is an IoT platform that enables you or your customers to easily and efficiently deploy a comprehensive IoT tracking solution, complete with seamless indoor and outdoor positioning, tracking, and routing capabilities. The key to our platform is location awareness.

Our awesome features

- IoT tracking solution with seamless indoor and outdoor positioning, tracking, and routing.
- Multi-tenant SaaS platform with an on-premises self-hosted option.
- White-labeling and customization capabilities.
- Device management with auto-enrollment and downlink commands.
- No-coding and with-coding data parsing options.
- Data capture and storage.
- Real-time tracking in 2D and 3D.
- 3D modeling of buildings and indoor environments.
- Geofence alerts.
- Visualization of IoT sensor data and alerts.
- Event subscriptions and distribution.
- Indoor positioning infrastructure management system.
- Integrations with external systems (HTTPS, MQTT, WebSockets).
- Alert messaging via email, text messages, and Firebase Cloud Messaging (FCM).
- Traxmate REST API for use with apps, ERP, or CRM systems.
- Multilingual support.

Seamless indoor/outdoor tracking

The Traxmate system supports multiple indoor and outdoor positioning solutions, such as GPS/GNSS, cellular-based positioning, and Wi-Fi and Bluetooth-based indoor positioning. Real-time and historical positioning data is visualized in 2D and 3D on a wide range of map types.

You or your customers can easily create buildings or facilities in the system, specifying the number of floors and uploading floor plans. Indoor elements such as doors, elevators, stairs, and walkways can be specified, and a routing feature is available to find the shortest route from A to B.

1200+ device types already supported

The platform already supports more than 1200 different device types, and additional devices can be easily added. Incoming data can be parsed without coding or through simple scripting. Downlink commands can be configured and easily triggered from the web-based inter-

Geofences and Alerts

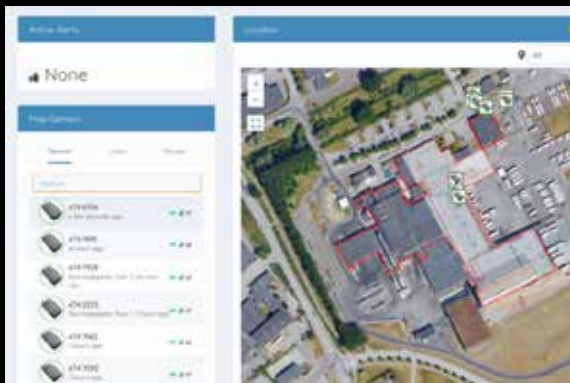
You can easily specify geofence areas in 2D or 3D that trigger geofence alerts when selected devices or users leave or enter the areas. You can also configure additional alerts for IoT sensor values such as temperature, humidity, or similar. You can set up subscriptions for alerts that distribute the alerts to external systems or send them to end-users.

EFFICIENCY. SECURITY. SAFETY.
THROUGH LOCATION AWARENESS.

traxmate

tracking everything everywhere

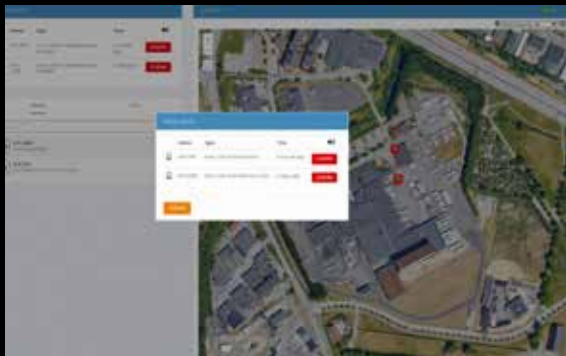
Dashboards with overview
of devices and alerts



REST API, MQTT and
WebSocket integrations



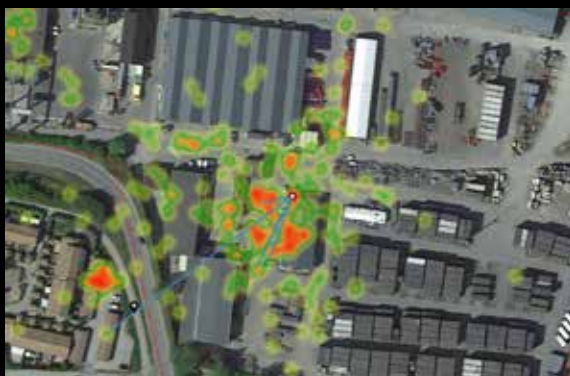
Geofences and Alert rules
Device attributes, signals and properties



Subscribe to events and alerts via Text messages,
Emails, HTTP and/or Firebase Cloud Messaging



Track tools and Heat maps



Mult-platform: Web, Android and iOS apps



2D and 3D maps



How to get started?

Contact us for a free evaluation of the Traxmate platform. Depending on your needs, you can either use our cloud-based version or we can provide Traxmate as a self-hosted on-premises solution. For indoor positioning, you can use our tools and/or professional services to set up and verify the indoor positioning accuracy. Your company can also have a privately branded version of Traxmate to offer to your customers.

To get started, send us an email at sales@traxmate.io

www.traxmate.io