



Discovering the Magic of Wi-Fi HaLow

Since the dawn of Wi-Fi, wireless tech has been on a wild ride, evolving from Wi-Fi 4 to the current Wi-Fi 6E, and soon-to-come Wi-Fi 7. Each step has given us quicker and steadier net experiences. But with the rise of the Internet of Things (IoT) and Industrial IoT (IIoT), we're facing a whole new level of diverse and tough connectivity needs.

To tackle these demands head-on, the Wi-Fi Alliance has pulled a rabbit out of the hat—Wi-Fi HaLow.



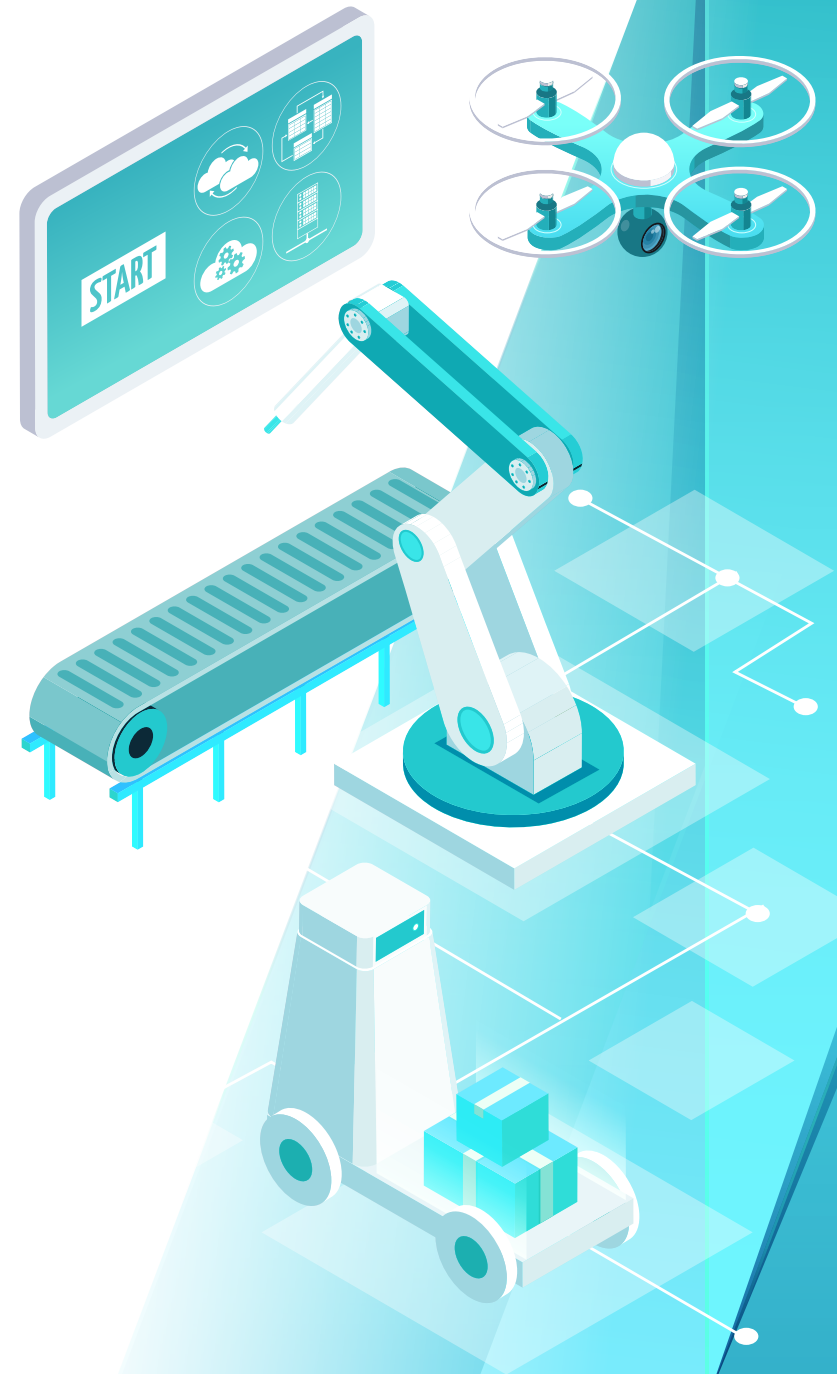


So, What's Wi-Fi HaLow Exactly?

Wi-Fi HaLow is a fresh wireless tech that's all about rockin' extensive coverage, super low power drain, and a punchy ability to pass through obstacles. It's part of the IEEE 802.11ah standard, which is the cool kid optimized for low-power, long-range chats. Unlike regular Wi-Fi, Wi-Fi HaLow grooves on lower frequencies (around 900 MHz), which makes it a champ at bustin' through walls and stuff to deliver killer indoor and outdoor coverage.

Why Do We Even Need Wi-Fi HaLow, You Ask?

While classic Wi-Fi is all about speed and efficiency, it's like a sports car in a world that needs monster trucks. Think about long-range surveillance, building smart cities, or even farming tech—these need long-distance talks and energy sipping. Wi-Fi HaLow swoops in with its stellar range and a power diet, saving the day.



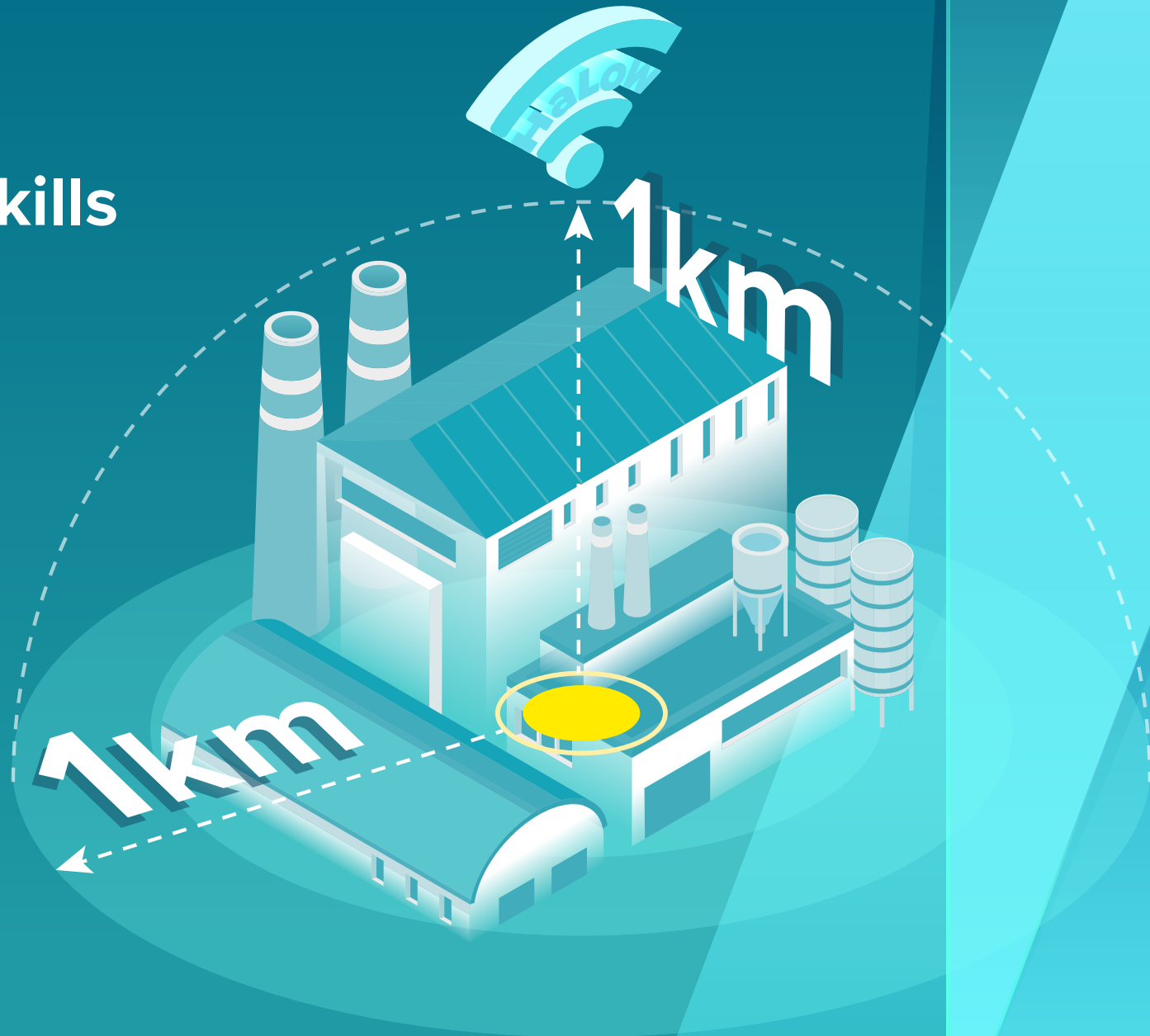


Wi-Fi HaLow's Skills & Cool Jobs

Gigantic Coverage Range

Wi-Fi HaLow's low-frequency jam gives it the swag to blanket both indoors and outdoors. It can chat up to 1 km away, making regular Wi-Fi look like a short-range radio.

It's perfect for industrial gigs with sensors and surveillance gear. Plus, it's the king of expanding coverage, making it awesome to connect far-off spots and places with lousy signals.





Super Duper Signal Penetration

Wi-Fi HaLow's low frequency means it's the Houdini of signal penetration—it can even slip through two beefy 30cm steel plates. That's a win in places that need signals to bust through walls, like factories and buildings.

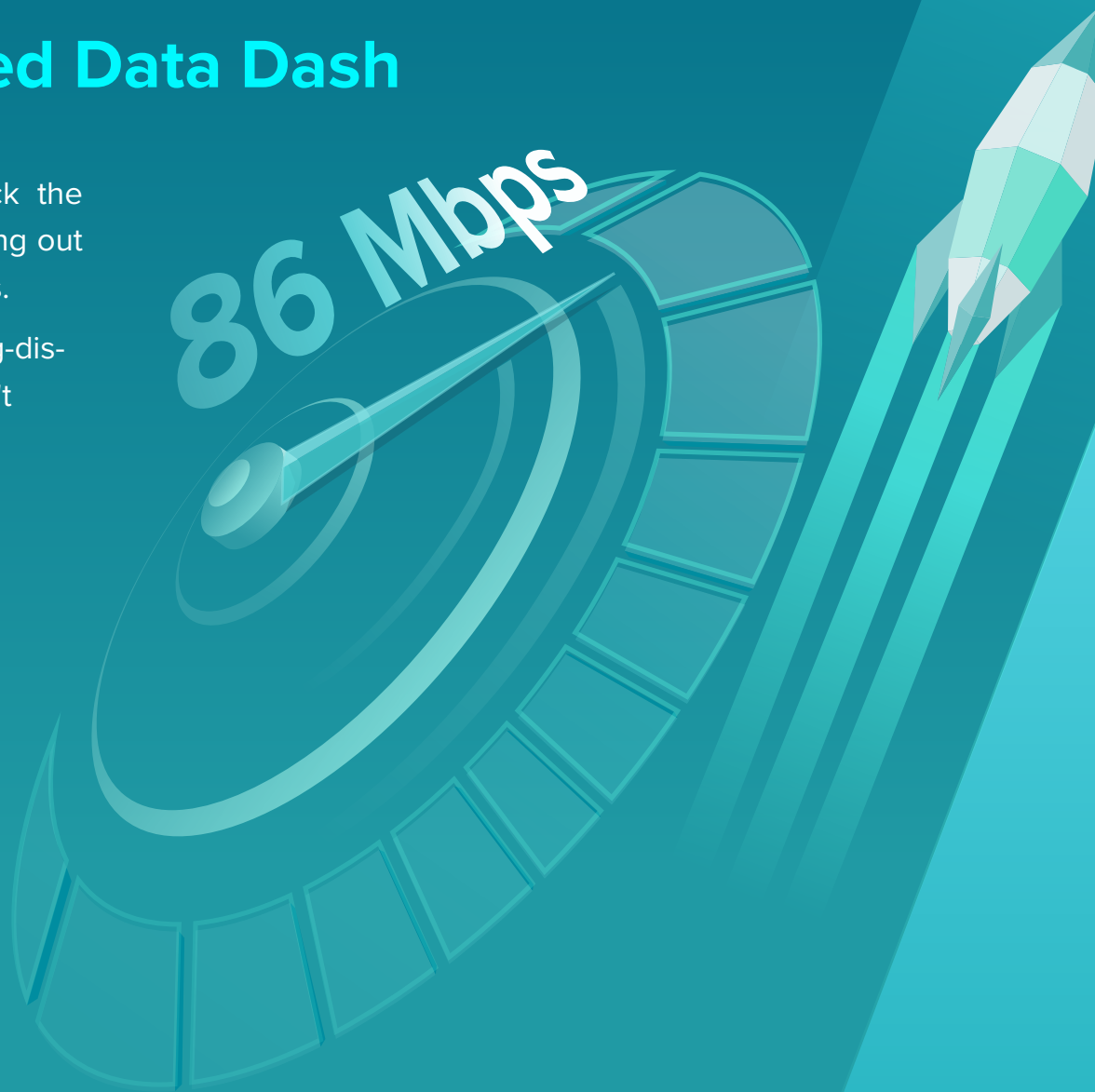




High-Speed Data Dash

Wi-Fi HaLow can rock the 256QAM tune, pumping out speeds up to 86 Mbps.

Even though it's a long-distance champ, it doesn't skimp on speed.





Battery Saver Deluxe

IoT gadgets are all about that battery life. Wi-Fi HaLow's the superhero here, slashing energy use during chats, and giving your devices a battery life boost that lasts up to five years.

Perfect for things like watching over smart cities or farming automation, where staying powered up is key.





Bottom Line

Amidst the dynamic IoT and IIoT landscape, where diversity and high-tech rule, robust connectivity is a must. Introducing Wi-Fi HaLow, the technology that offers extensive coverage, minimal power consumption, and impressive capabilities. Whether it's overseeing remote areas or constructing smart cities, Wi-Fi HaLow is the catalyst behind future technological advancements.

AsiaRF, a leader in Wi-Fi HaLow IoT technology

Wi-Fi HaLow, a key IoT component, seamlessly integrates advanced tech into daily life, enhancing convenience. AsiaRF, a Wi-Fi HaLow pioneer, welcomes you to explore future wireless possibilities. Discover more at www.asiarf.com.



For more information, please visit
<https://www.asiarf.com/>
or scan the QR code

- Email: sales@asiarf.com
- +886 2 8943-1001