

CONNECTING · THE FUTURE 連接 · 未來



Asia-Pacific's Leading Internet-Based Integrated Telecommunications Enterprise

CITIC Telecom International Company Profile

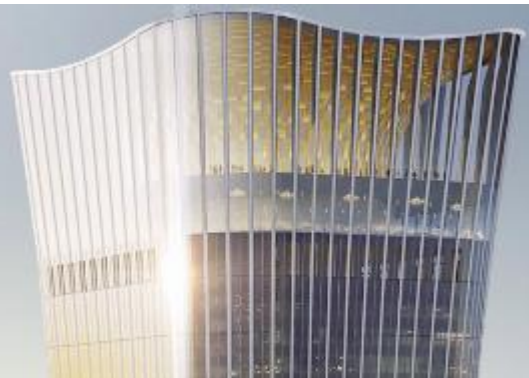
May 2025

CITIC: One of The largest conglomerate in China

- CITIC Group was established in 1979 by Mr. Rong Yiren with the support of late Chinese leader Deng Xiaoping.
- After 40+ years of development, CITIC has developed into a large state-owned multinational conglomerate, ranking 71th on the Fortune 500 in 2024.
- It focuses primarily on financial services, resources and energy, manufacturing, engineering contracting, real estate, telecommunications and other sectors, and has extended to consumer business in recent years.
- As of 31 December 2024, CITIC Limited had total assets of RMB 12,075 billion and total ordinary shareholders' funds of over RMB757.5 billion.



We strive to be the best
and leaders in the fields
we operate



Introduction of CITIC Telecom International

- CITIC Telecom International Holdings Limited was established in 1997 and listed in HK in 2007, with nearly 2500 staff all over the world and total assets valued over HK\$17.4 billion as at the end of December 2024



- One of the largest independent service providers in Asia Pacific, connecting over 600 carriers globally
- Providing various platforms such as “Cross-border Mobile Communications Service Platform”, “Global Data Trading Platform - DataMall” and “Corporate Messaging Service Platform”



- Providing ICT services for MNCs with ~170 PoP and 21 Cloud data centres
- CPC has unified management on CEC; and CEC possesses several national value-added telecom business licenses
- Unique edge in the ‘Belt and Road’ regions



- The one and only full-service integrated telecom operator in Macau
- One of the largest IT companies in Macau
- Dedicated to becoming the operator of smart city in Macau



- Providing one-stop enterprise ICT and internet services in Southeast Asia



57.54%

Institutional and public shareholders

42.46%



1883.hk



ComNet

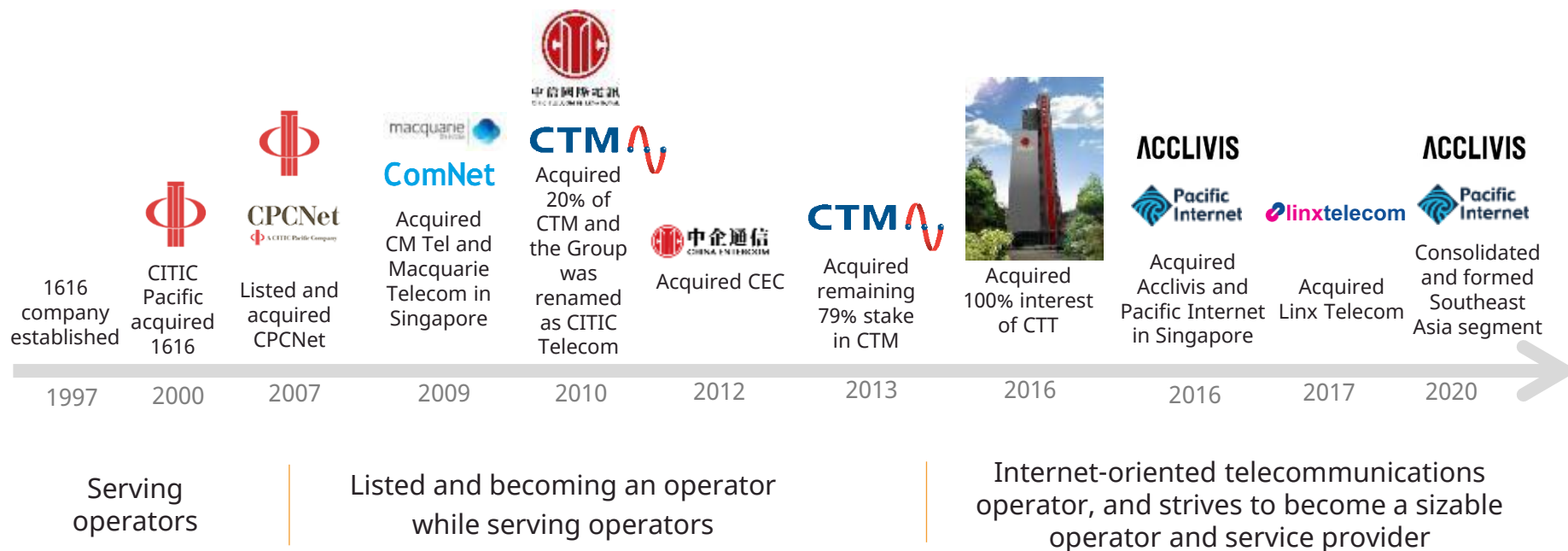


ACCLIVIS



*The above shareholding percentages were dated as at 31 Mar 2025 and the exact figures may change from time to time. The above-mentioned figures may not reflect the most updated information

Milestones



Core Values and Mission:

Vision

- To become a digitalised and intelligentised comprehensive telecommunications company in Asia Pacific, and provide quality services for social development, corporate innovation and the better lives of people.

Mission

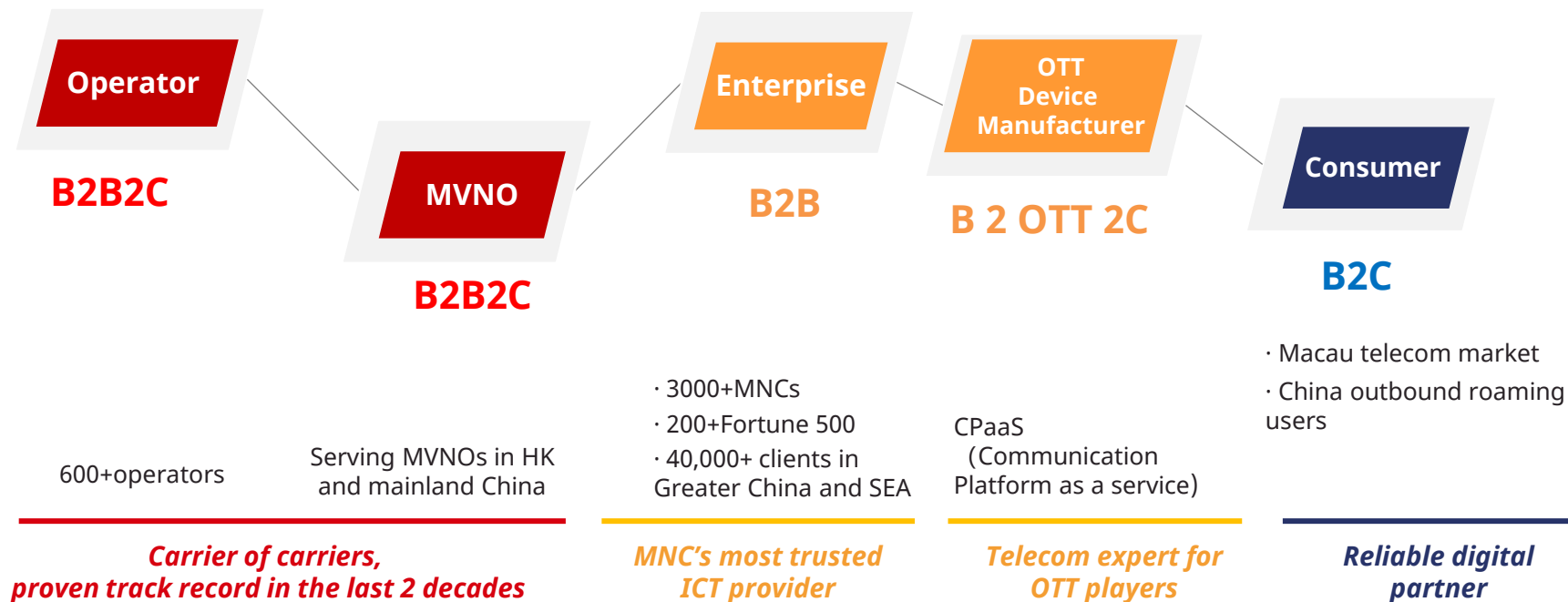
- With the backing of Chinese mainland, establishing a foothold in Hong Kong and Macau, and connecting to the world.
- Focusing on international development, pursuing technological innovation, and enhancing core competitiveness.
- Customer-oriented, with value creation as our goal, providing sustainable return for our shareholders.



CONNECTING · THE FUTURE

連接 · 未來

5 Major Client Categories with Different Business Models



One-stop Integrated Telecom and ICT Product Portfolio

Operators & MVNO

(Global)

- ✓ **International voice wholesale**
- ✓ **SMS**
 - A2P/P2P international SMS
 - Hong Kong domestics inter-operator SMS
- ✓ **Mobile Roaming and Value-Added Services**
 - Signaling (SCCP)
 - SIMN
 - PRS
 - MVNE
 - GMVNO
 - USSD
 - IPX
 - SMS Firewall
- ✓ **Global Data Traffic Trading Platform - DataMall**
 - Merchant service
 - Partners
- ✓ **Big Data**
- ✓ **Internet**
- ✓ **IoT**



Enterprise, OTT & Device Manufacturer

(Global)



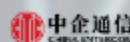
- ✓ **MNC**
 - TrueCONNECT™ Private network solutions
 - TrustCSI™ Information security services
 - SmartCLOUD™ Cloud computing solutions
 - DataHOUSE™ Cloud data centre
 - Internet services
 - Value-added managed services

(SEA)

- ✓ Pacific Internet
- ✓ Cloud services
- ✓ Infrastructure Services
- ✓ Network Transformation
- ✓ Business Continuity & Disaster Recovery
- ✓ EABRC
- ✓ Security Services
- ✓ Technology Support & Maintenance
- ✓ Workplace Support
- ✓ Enterprise mobile & voice services
- ✓ Smart city solutions



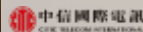
(Mainland China)



- ✓ **Mainland China Enterprise**
 - CeOne-CONNECT Private network solutions
 - TrustCSI Information security services
 - SmartCLOUD Cloud computing services
 - DataHOUSE Cloud data centre
 - China Internet services
 - Value-added managed services

(Hong Kong & Macau)

- ✓ **Macau Enterprises**
 - IPLC
 - Business Fiber Broadband Service
 - Enterprise solutions
 - Other businesses
- ✓ **A2P SMS**
- ✓ **High-grade data centres**
- ✓ **CloudSMS**
- ✓ **IP phone-YouCLink**
- ✓ **Smart city solutions**



(Global)

- ✓ **OTT products & services (CPaaS)**
 - DataMall and data traffic
 - Mobile numbers
 - International voice
 - A2P SMS
- ✓ **Enterprise mobile & voice services**



Consumer

(Macau)

- ✓ **Macau Mobile Services**
 - Local 5G
 - Roaming
 - "Guangdong-Hong Kong- Macau Bay Area" service
 - OTT TV
- ✓ **Sale of Headset in Macau**
- ✓ **Macau Broadband**
 - Household broadband
 - WiFi
 - OTT TV
- ✓ **Macau fixed line**
 - Fixed line local voice
 - Fixed line international voice



Global Coverage: Unique Edge in the 'Belt and Road' Regions

600+

Global carriers
connected

~170

Global PoP

20

Cloud computing
platforms

22

Organizations
Covering 22
countries/regions

3000+

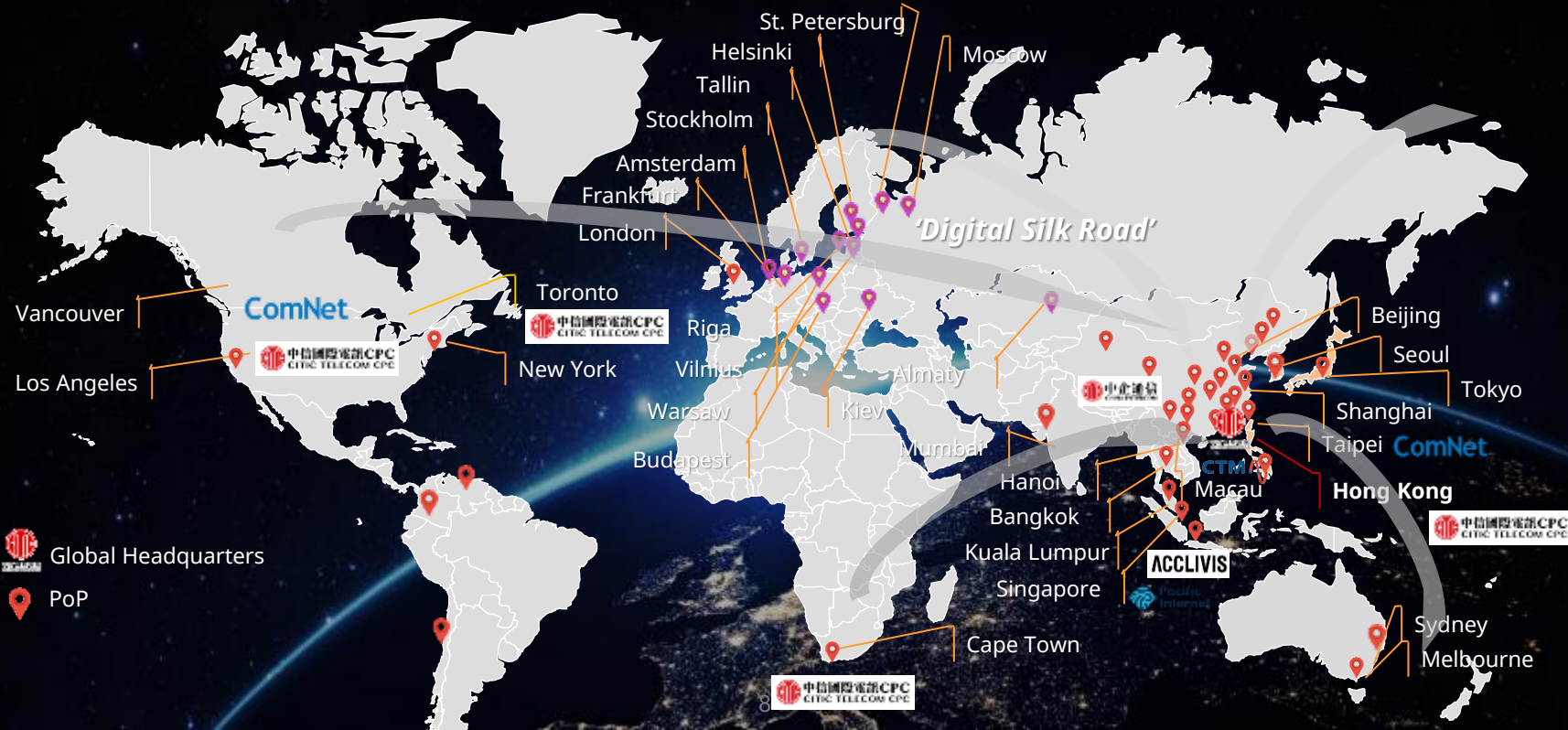
MNC clients

40000+

Local enterprise
clients

200+

Fortune 500 clients



Accelerating digital-intelligent transformation and embracing the AI era

Strengthening network infrastructure capabilities and advancing AI+ initiatives to drive intelligent development

AI+ Innovative Industry Solutions



CTM promotes the Integration and Innovation of AI, large language models (LLMs) and multiple elements such as Cloud, Network, Computing Power and Security. It delivers AI-driven industry solutions for key sectors such as government affairs, tourism, education, and medical care

AI+ Empowering "Cloud-Network-Security" Product Upgrades



Utilising large language models (LLMs) to enhance SmartCLOUD™ products, enabling intelligent assistant features. Users can now easily query cloud resource information through natural language dialog

AI+ Enhancing Internal Operational Efficiency



Driving comprehensive quality and efficiency improvements across front-end and back-end operations using big data and AI-powered tools. Promoting enterprise-wide adoption of large models to optimise workflows, resources, and overall performance

Elevate innovation in technology, products, and holistic solutions

- As at the end of December 2024, the Group has a cumulative total of 21 authorised patents and 63 software copyrights. In 2024, the Group newly obtained 9 authorised patents and 20 software copyrights
- Expansion into the large model market: Developed a heterogeneous large model management platform to reduce the application costs of large AI models and drive value enhancement in cloud computing services
- Launched the "Dr. Easy" healthcare platform using AI technology, offering a one-stop smart healthcare solution for medical institutions in Macau

R&D and Operation Support



In-house R&D +
collaboration with
external parties



7 x 24 round-the-
clock service



Global customer
service team



A R&D team of over 200
professionals



ISO9001, ISO14001,
ISO20000, ISO27001 and
ISO27017 accreditations



SLA service level
agreement



ESG Awards & Accreditation

Awards

- CITIC Telecom Wins the Third Prize in “Open Gateway Global Use Case Innovation Challenge” Boasting Innovative Technologies
- CITIC Telecom’s subsidiary CTM’s “Macau Smart Tourism and MICE Solution” Wins First Prize at Greater Bay Area 5G Application and Innovation Challenge
- CITIC Telecom CPC Wins Outstanding Award at 2025 Hong Kong Sustainable Development Innovation and Technology Awards
- CITIC Telecom CPC AI Innovation Garner Multiple Accolades
 - ❖ AI Databank won “International Innovation Awards 2024 – Service & Solution Category” organized by Enterprise Asia
 - ❖ Advanced FinTech AI Competition (AFAC) 2024 – Contradiction Identification and Vulnerability Discovery in Texts
 - ❖ 5 awards in “iFLYTEK Developer Competition”
 - ❖ Intelligent Extraction of Micro-needle Technology Information in Texts based on Large Language Model
 - ❖ High-precision Capture of Portrait Videos in Complex Scenarios
 - ❖ Object Detection of Vehicle Camera Images Challenge
 - ❖ Pedestrian Image Identification in Agricultural Scenario Challenge

ESG Certificates

- “Happy Workplace 5+” — *Enhancing Happiness Index Foundation*
- “10+ Year Caring Company” Emblem & — *The Hong Kong Council of Social Service*
- “Joyful@Healthy Workplace Charter” — *Department of Health, HKSAR · Occupational Safety & Health Council*
- “ERB Manpower Developer Award Scheme” — *The Hong Kong Council of Social Service*
- “Family-Friendly Employer” — *Labour Department, HKSAR*
- “Social Capital Builder Logo Award” — *Community Investment and Inclusion Fund*
- “Privacy-Friendly Silver Award” — *Office of the Privacy Commissioner for Personal Data*
- “Ethical Business Charter” — *Independent Commission Against Corruption*



谢谢！

中信国际电讯集团有限公司
香港葵涌葵福路93号中信电讯大厦25楼
电子邮箱：contact@citictel.com

