

**60+ DEVICES**  
Each second

**19,000,000,000+**  
Devices to date

**CONNECT. SENSE. INFER.**

## Who We Are

We are passionate about the smart edge. Our wireless communications and edge AI sensing technologies are at the heart of today's most advanced smart edge products. We deliver the technology that enables a smarter, safer, and more interconnected world. We excel in providing the technology and market expertise our customers need to be successful, and we've been doing it for over 30 years. Ceva is already powering more than 19 billion of the world's most innovative smart edge products.

## What We Do

We provide our customers with comprehensive, vertically integrated silicon and software IP solutions that enable them to develop intelligent, connected devices with superior performance, power efficiency and flexibility.

Whether it is sensing, analyzing and applying AI to data from a camera, a microphone or an inertial measurement unit, or connecting a device using 5G, NB-IoT, Wi-Fi, Bluetooth or UWB, our unique technology IP portfolio lowers barriers-to-entry, time-to-market and costs associated with getting to market.

## The Ceva IP Portfolio:



## Connect



From Bluetooth to 5G, we ensure seamless connectivity as the world's leading licensor of IoT connectivity solutions.

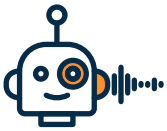
Our advanced Ceva-Waves platform solutions for Bluetooth low energy and dual mode, Wi-Fi, and UWB, help fast-track your SoC design.

With over 1 billion devices powered by our IoT connectivity IPs shipped annually, we are at the heart of the IoT revolution, supporting smart hearables and TWS earbuds,

smartwatches, wireless sensors, and speakers.

Additionally, 5G and cellular IoT have transformed communication with incredible data speeds and new use cases leveraging cellular networks. Our PentaG baseband platforms lower entry barriers for developing 5G, 5G-Advanced and SATCOM modems and SoCs, while our Ceva-XC vector DSPs for 5G smartphones, terminals and infrastructure form the backbone of 5G networks globally.

## Sense



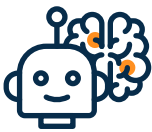
Our Sensor Fusion, Audio, and Voice software solutions, along with our Audio and Vision DSPs (Digital Signal Processors), deliver cutting-edge user experiences.

From RealSpace, which offers immersive spatial audio with precise head tracking, to ClearVox, providing crystal-clear voice calls in challenging situations using Audio AI, and Ceva-BX1 audio DSP and Ceva-SensPro vision AI DSP, our offerings meet the demands of Edge AI, Imaging, Vision, Radar, Audio, and Voice applications.

Additionally, our MotionEngine sensor fusion software translates human, robotic, and device motion into intuitive user interfaces, accurate navigation systems, and context-aware devices.

Whether you're designing TWS earbuds, headphones, soundbars, conferencing systems, AR/VR headsets, action and surveillance cameras, industrial robots, or other consumer devices, we deliver next-level experiences that your customers crave.

## Infer



Our Edge AI solutions empower the creation of intelligent machines with human-like abilities across various applications, including automotive safety, surveillance, voice assistants, and ambient sensing.

We provide a comprehensive family of scalable Neural Processing Units (NPU) designed for power-efficient Edge AI deployment in neural network-based designs, paving the way for the future of Edge AI applications.

From NeuPro-Nano, optimized for embedded machine learning workloads in AIoT applications, to NeuPro-M, tailored for multi-modal, generative AI, and agentic AI use cases at the edge, our offerings are equipped to meet the demands of next-generation Edge AI.

Additionally, our NeuPro-Studio AI SDK enhances model development and deployment efficiency, ensuring our solutions cater to the evolving needs of Edge AI technology.

### USA (HQ)

15245 Shady Grove Road  
Suite 400  
Rockville  
MD, 20850  
Tel: +1 (240) 308 8328

### Israel

2 Maskit Street  
P.O. Box 4047  
Herzeliya 4612001  
Tel: +972 9 961 37001

### France

Les Bureaux Green Side 5  
400, Avenue Roumanille  
06410 Biot  
Sophia Antipolis  
Tel: +33 4 83 76 06 00

### Ireland

Unit A2, First Floor  
Building 6500  
Airport Business Park  
Kinsale Road, Cork  
Tel: +353 1 237 3900

### USA (West)

1174 Castro Street  
suite 275  
Mountain View  
CA 94040  
Tel: +1 (650) 417 7900

For more information:

