



Smart Self-Checkout & Food Ordering Solutions

# InnoWave Telco – Empowering Digital Retail Experiences

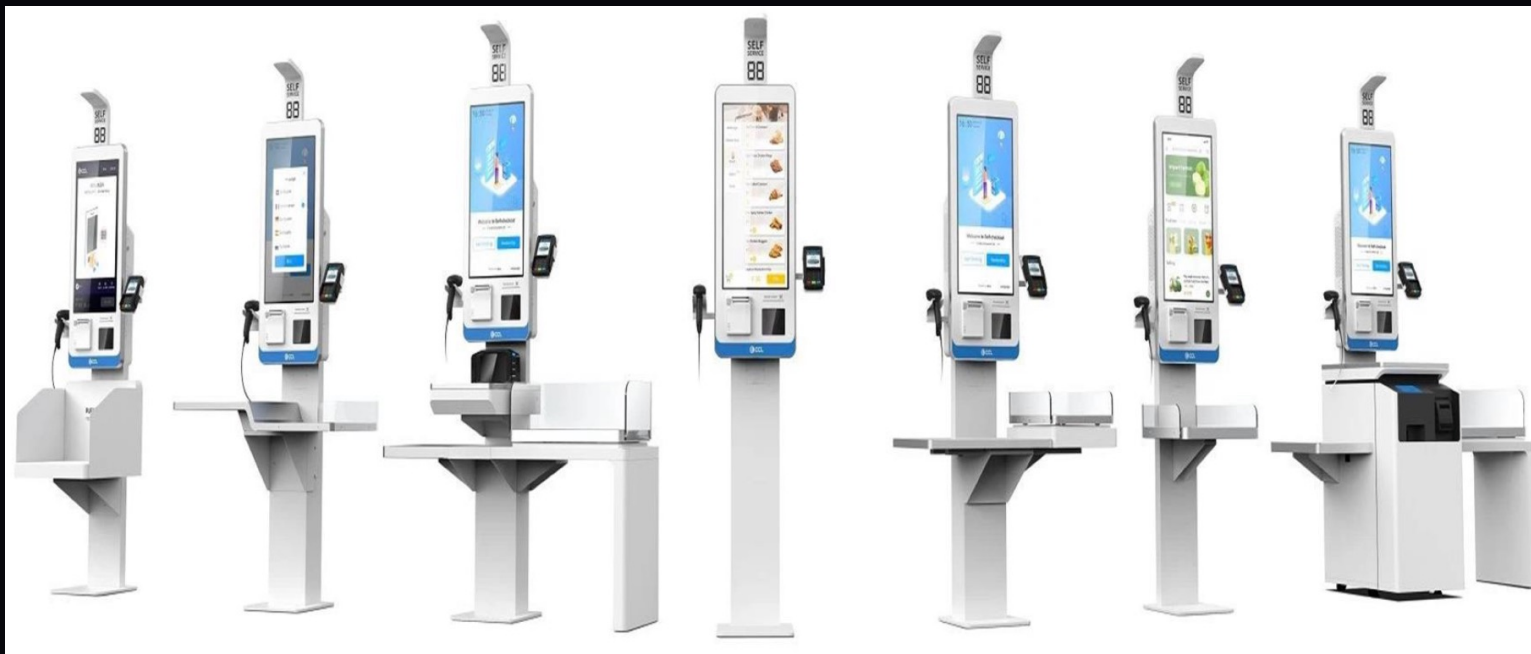


# Smart Self-Checkout & Food Ordering Solutions



Transforming Retail & Hospitality Operations through Automation

InnoWave Telco – Bridging Technologies. Building Expertise.





## The Digital Transformation of Retail & Dining

Today's customers demand **speed**, **convenience**, and **autonomy**. Retailers and restaurants must evolve by adopting **intelligent self-service technologies** that simplify operations, reduce queues, and enhance satisfaction.



# InnoWave Telco Smart Retail Ecosystem



InnoWave Telco offers a **complete self-service ecosystem** enabling frictionless transactions and smart operations across retail, grocery, and food service industries. Our ecosystem includes:



**Self-Checkout Machines (SCO)**



**Self-Ordering Kiosks**



**Integrated POS Terminals**



**Kitchen Management Displays**



**Centralized Administration & Analytics**

**Message:** Digitally connect front-of-house with back-of-house for a seamless customer journey.



# Self-Checkout Machines (SCO)



Modern design, intuitive interface, and high reliability make our self-checkout units the perfect solution for modern retail.

## Key Features:

- 21.5" & 27" touch displays (Z2K & Z2T Series equivalent)
- Built-in high-speed thermal printer
- Integrated barcode scanner (Zebra / Datalogic type)
- Modular architecture for easy installation and maintenance
- Optional NFC & EFT payment modules
- Compact footprint to maximize retail space

☐ **Outcome:** Faster checkout, reduced queues, improved customer experience.



# All-in-One POS Terminals



Our sleek, space-efficient POS terminals are designed for cashier counters and hybrid setups.

## Key Features:

- Integrated 15.6"–21.5" touchscreen with customer display
- Built-in printer & scanner modules
- Multi-OS compatibility (Android / Windows / Linux)
- Optional facial pay & e-voucher modules
- 360° rotation for cashier–customer flexibility

**Outcome:** Seamless operations, quick transactions, and enhanced ergonomics.





## Smart Food Ordering Kiosks

Redefining restaurant ordering experience with **interactive, customizable kiosks** that engage customers and streamline processes.

### Capabilities:

- Visual digital menu with item photos
- Add/remove ingredients (extra spicy, no mayo, etc.)
- Allergy & calorie display
- Combo & discount options
- Integrated loyalty programs and payment methods
- Multi-language interface

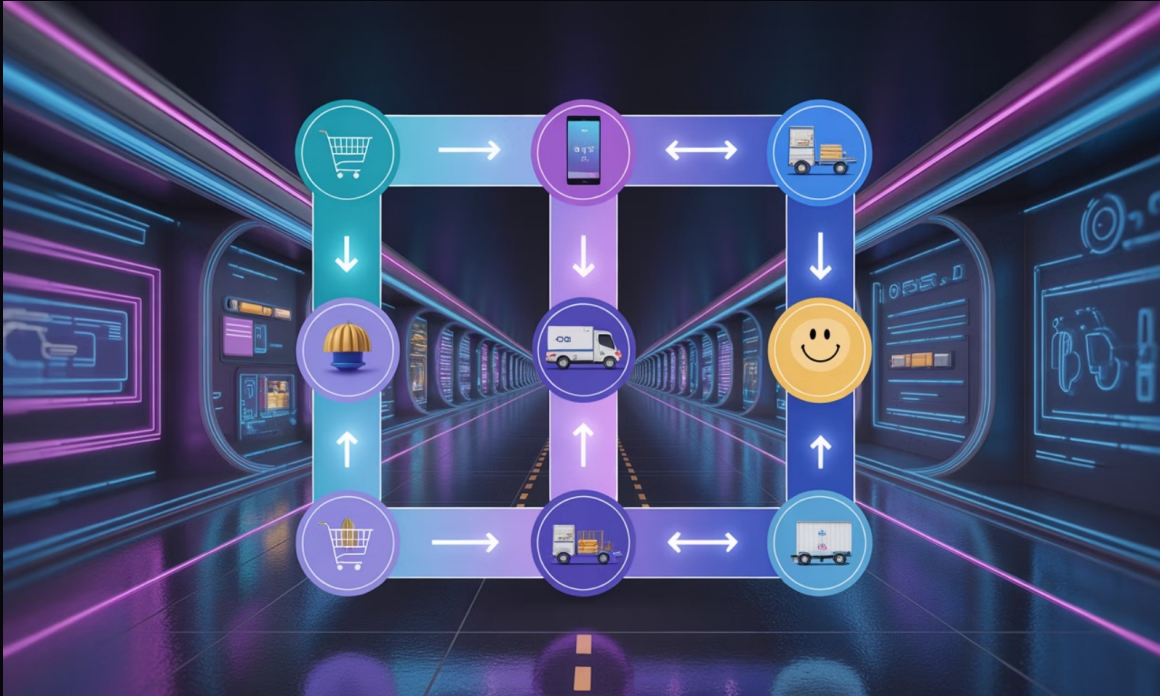
**Outcome:** Faster order processing and improved upselling opportunities.



# Kitchen Management & Order Fulfillment

End-to-end digital kitchen process from order creation to fulfillment.

- 01 Real-time order tracking via kitchen tablets
- 02 QR-based touch-free processing
- 03 Multi-kitchen & food-station setup
- 04 Automatic printouts for each order
- 05 Status update display for customers (TV / web / app)



Outcome: Reduced errors, faster delivery, and optimal kitchen workflow.

# System Administration & Integration



Manage all devices and menus from one central platform.

## Features:

- Cloud or on-premise management
- Direct POS system integration
- Centralized kitchen & item availability control
- Unified reporting and BI dashboards
- Integration with loyalty, CRM, and payment gateways

**Outcome:** Real-time visibility, control, and operational efficiency.



# Technical Architecture



An integrated environment built for **scalability** and **simplicity**.

---

Self-Checkout / Ordering Kiosks (Android OS)

---

Kitchen Tablets & Printers

---

POS Integration Layer

---

Cloud-based Administration & Analytics

---

Optional Mobile & SMS integration

**Outcome:** A reliable, secure, and easily expandable digital ecosystem.



# Business Benefits



## For Retailers:

- Reduced checkout queues & operational costs
- Higher throughput per cashier
- Improved space utilization

## For Restaurants:

- Faster order fulfillment
- Consistent order accuracy
- Enhanced customer satisfaction & loyalty

## For Customers:

- Self-service convenience
- Personalized order experience
- Multiple payment options



# Why Choose InnoWave Telco



Deep Telecom & Technology Expertise



Proven Digital Transformation Partner



Scalable Solutions for Retail, F&B, and Enterprises



Integration with CRM, Loyalty, and ERP Systems



Strong Local Support & Implementation Services

**Message:** We don't just deliver technology — we deliver **business transformation**.





# Use Cases & Deployment Models

## Use Cases:

- Supermarkets & Hypermarkets
- Cafeterias, QSRs & Food Courts
- Hotels & Resorts
- Corporate Canteens

## Deployment Options:

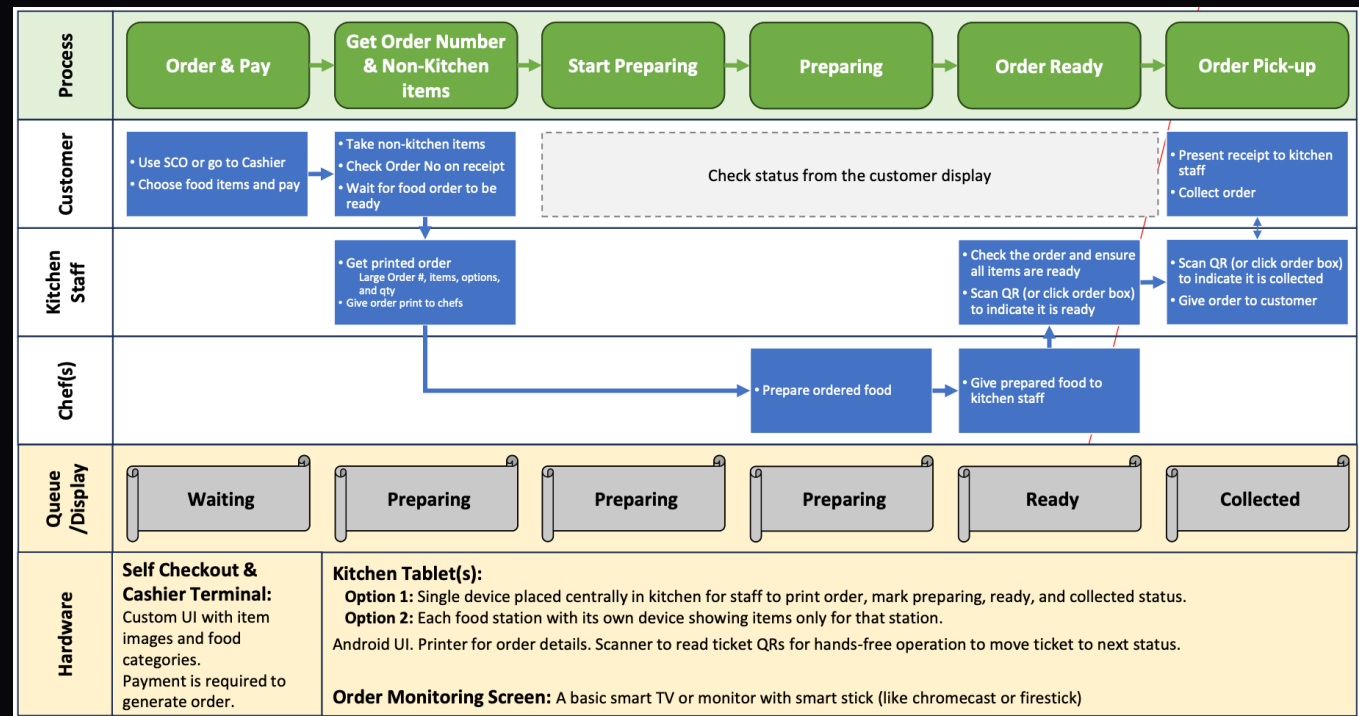
- On-Premise
- Cloud-Managed SaaS
- Hybrid



# Customer Journey in Action



- 1 Customer browses menu or scans items
- 2 Customizes and pays directly at kiosk
- 3 Order sent digitally to kitchen tablets
- 4 Kitchen prepares and updates status
- 5 Customer monitors order on screen
- 6 Picks up order when ready



# Analytics & Performance Dashboard




Gain powerful insights from a single dashboard:

Real-time sales tracking

Peak hours and order heatmaps

Customer preferences & loyalty data

Device uptime and transaction performance

 **Outcome:** Data-driven decisions to optimize staffing, menu, and layout.

# The Future of Retail & Dining



Automation, AI, and analytics are redefining how customers interact. InnoWave Telco empowers businesses to embrace this future with **modular, intelligent, and customer-centric** solutions.

**"Redefine customer experience.  
Reinvent efficiency."**





*Let's Build the Future  
of Smart Retail Together*

**InnoWave Telco**  
*Bridging Technologies.  
Building Expertise.*

[www.innowavetelco.com](http://www.innowavetelco.com) | [info@innowavetelco.com](mailto:info@innowavetelco.com)



[www.innowavetelco.com](http://www.innowavetelco.com)