

Comprehensive Cybersecurity Rating Platform

Solution Overview

Cymetricx is a comprehensive cybersecurity rating and governance platform that continuously measures, improves, and communicates your organization's security posture. It unifies asset intelligence, vulnerability and patch hygiene, configuration benchmarking, identity and access health, continuous control monitoring (CCM), and regulatory compliance into a single, executive-ready score. With automated evidence collection and advanced analytics, Cymetricx transforms fragmented security data into clear priorities, audit-ready reports, and measurable risk reduction.



Why a Cybersecurity Rating Platform?

- **Board & Regulator Communication:** Convert technical signals into a defensible, businesslevel score with drilldowns and trend lines.
- **Continuous Assurance:** Replace pointintime audits with alwayson measurement and alerts for posture drift.
- **Prioritized Risk Reduction:** Focus teams on the few actions that materially lower risk, based on exploitability, business impact, and control coverage.
- **AuditReady Evidence:** Centralize policies, procedures, and proof of control effectiveness to accelerate certifications and assessments.
- **CrossTeam Alignment:** Provide a common language across Security, IT, Risk, and Compliance.

Cymetricx Rating Overview

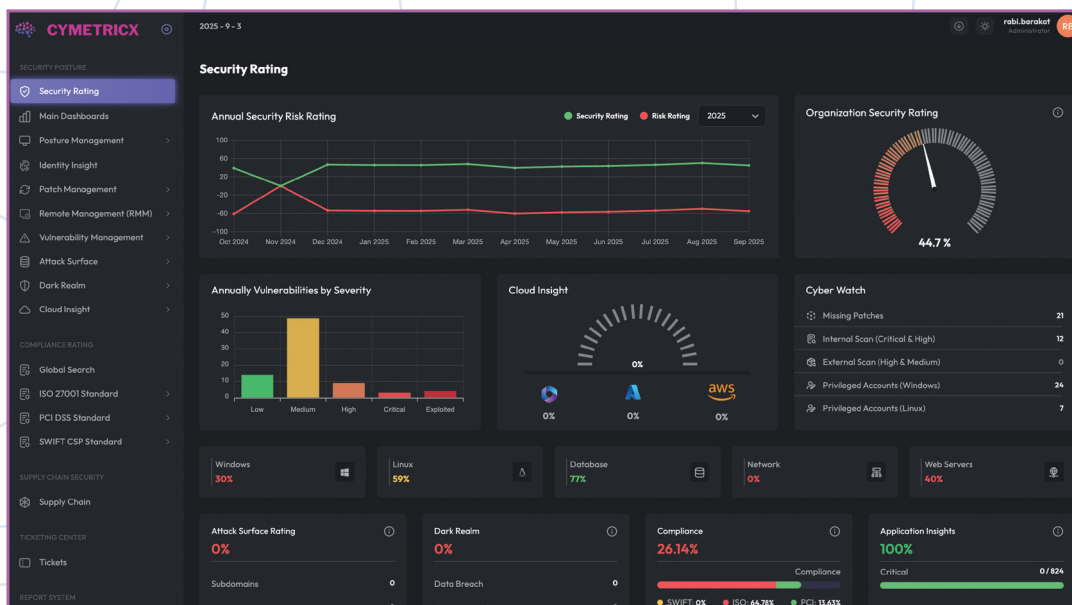
Cymetricx calculates a holistic rating (0–100) and a letter grade (A–F) across various pillars. Each pillar has subfactors with weights to match risk appetite and regulatory context.

Pillars

- **Control Maturity**— Existence and effectiveness of security controls mapped to ISO/IEC 27002:2022, NIST CSF, PCIDSS v4, SWIFTCSP, PMACSF, and SOC 2.
- **Hygiene & Resilience**— Patch cadence, vulnerability backlog age/severity, endpoint and server hardening, backup recoverability checks, EDR coverage.
- **Identity & Access Health**— MFA enforcement, privileged access governance, stale accounts, password hygiene, conditional access.
- **Compliance & Evidence** — Policy coverage, procedure implementation, automated evidence, auditorready documentation, corrective action progress.

Rating Characteristics

- **Continuously updated:** Near realtime ingestion from connectors; nightly recalculation by default.
- **Businessaware:** Criticality weighting by asset, application, data classification, and business service.



Core Platform Capabilities

1) Unified Asset & Inventory Intelligence

- Agent and agentless discovery for endpoints, servers, network devices, cloud resources, and SaaS identities.
- Data classification labels to weigh risk by sensitivity.

2) Vulnerability & Patch Intelligence

- Native ingestion from common scanners (e.g., Nessus, Qualys).
- **Advanced risk scoring** combines CVSS, exploit telemetry, KEV lists, asset criticality, and internet exposure.
- Maintenance window planning and change tickets

3) Configuration Benchmarking (ComplianceReady)

- Policy and configuration checks aligned to **ISO/IEC 27002:2022, PCIDSS v4, NIST, SAMA, NESA, CIS Benchmarks, SWIFTCSF, and many others**.
- Drift detection with baselines per OS, cloud, and application stack.
- Exceptions workflow with risk acceptance tracking and expiry.

4) Identity & Access Hygiene

- Coverage for Azure AD, AD onprem. .
- MFA enforcement dashboards, privileged role analysis, dormant/stale accounts, password age and rotation checks.
- Conditional Access policy review and shadow admin detection.

5) Continuous Control Monitoring (CCM)

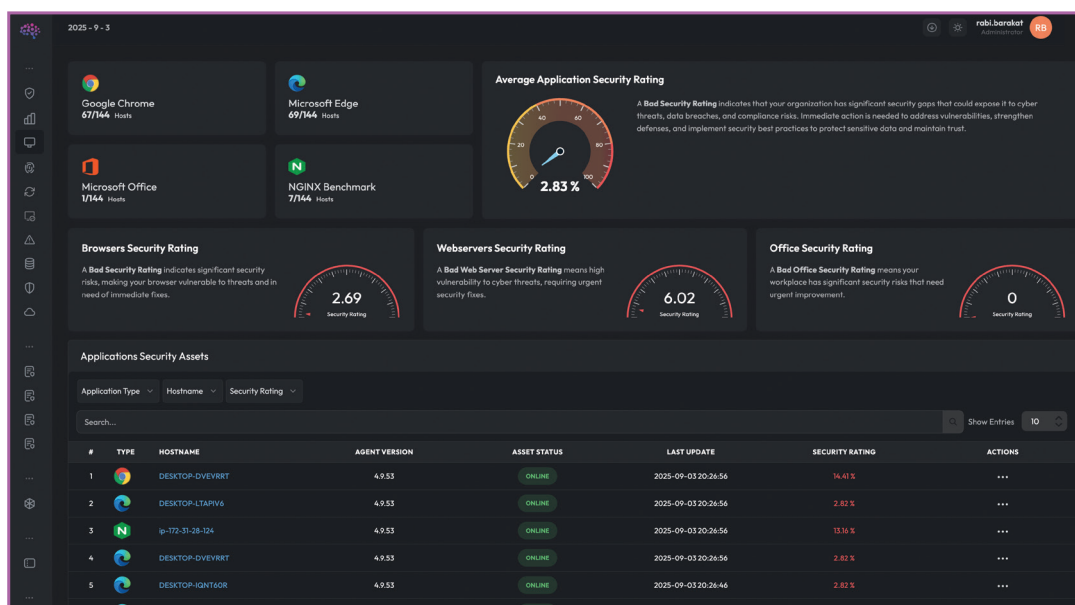
- Automated collection of evidence for control effectiveness.
- Control automation status, pass/fail history, and links to artifacts for audits.

6) Compliance Manager & Auditor Workspace

- Framework mapping for **ISO 27001/27002:2022, PCIDSS v4, SOC 2, NIST CSF, SWIFTCSF, PMACSF**, and custom frameworks.
- Statement of Applicability (SoA) generation; gap analysis; maturity scoring by clause/control.
- **Evidence Library**: versioned documents, screenshots, configuration exports, and task proofs tied to controls.
- **Audit Packs**: oneclick export of control narratives, evidence lists, owners, and timestamps.

7) Reporting & Executive Dashboards

- Csuite and Board views with trends, benchmarking, target vs. actual ratings, and top 10 risk reducers.
- Regulator and customerfacing posture summaries.
- **Export formats**: PDF and CSV.



Architecture & Security

- **Data Collection:** Lightweight connectors/agents for onprem and cloud; secure agentless collectors where supported.
- **Security:** TLS 1.2+ in transit; AES256 at rest; customermanaged keys optional (Enterprise).
- **Access Control:** SSO (SAML/OIDC), MFA, granular **RoleBased Access Control (RBAC)**.
- **Auditability:** Immutable audit logs, signed exports, and change tracking.
- **Privacy & Compliance:** Data minimization

Key Metrics, KPIs & KRIs

- **Cymetricx Rating (Overall & by Pillar)** — trend, target, forecast.
- **Patch SLA Compliance** — % of critical/high remediated within window.
- **Vulnerability Backlog** — count and age distribution by severity and asset criticality.
- **Identity Hygiene** — MFA coverage, privileged account sprawl, dormant accounts.
- **Control Effectiveness** — CCM pass rate and drift incidents.
- **Audit Readiness** — evidence completeness by control and framework.
- **Risk BurnDown** — open vs. closed corrective actions; risk exposure delta.

Reporting & Exports

- **Executive Reports:** Board and Clevel summaries with business translation and heat maps.
- **Operational Reports:** Patch SLA, identity hygiene, baseline drift, and exception register.
- **Export Options:** PDF, CSV

Typical Outcomes Within the First Quarter

- 20–40% reduction in critical vulnerability backlog on crownjewel assets.
- 100% visibility of privileged roles and MFA coverage gaps.
- 80% evidence completeness for chosen framework(s).
- Measurable rating improvement with traceable risk reduction.

All features described may evolve. This document is for informational purposes and does not create commitments or warranties.

CYSTACK



**ATTACK
METRIX**



CYMETRIX

SAFE
HUMAN RISK MANAGEMENT

ELEVATE YOUR CYBER DEFENSES

CYSTACK TECHNOLOGY L.L.C

Office 409 - Business Center 1 - Arjan - Dubai | Mobile: +971 505011025 | info@cystack.ae | Info@cymetricx.com

www.cystack.ae | www.cymetricx.com | www.cysafe.ps | www.attackmetricx.com