



# NodeShift

Roll out generative AI to all of your employees

Total Data Privacy

- ✓ SOC2
- ✓ ISO27001
- ✓ PDPL
- ✓ CCPA

Backed by:

HUB71

intel  
ignite



UNIVERSITY OF  
OXFORD

arca

10X  
Founders

inOVO

NOTION







KESTREL

# Enterprises need full control of their generative AI

Leverage AI's benefits without incurring regulatory or security risks.

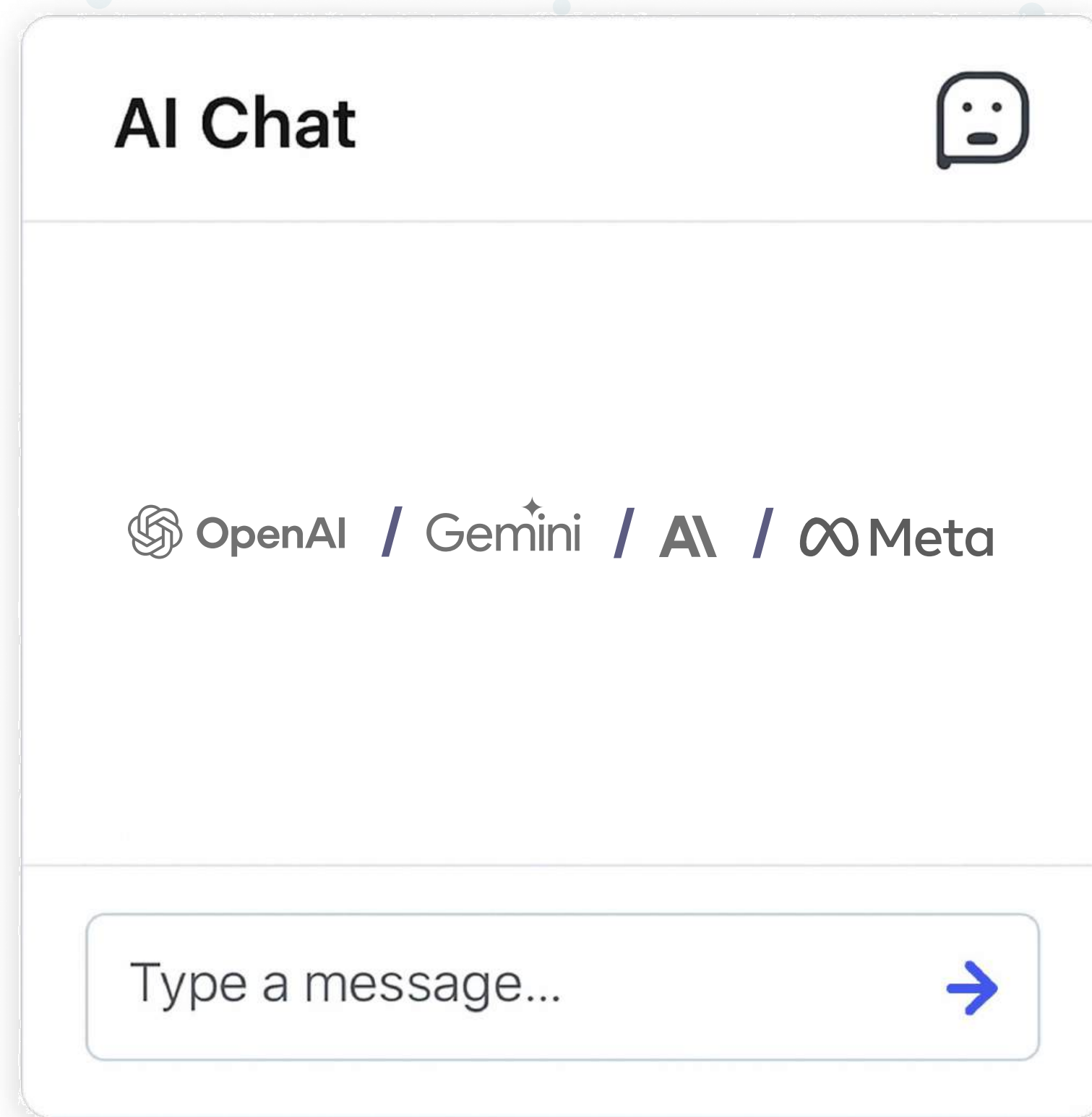
## GenAI platform for enterprises must provide:

-  Robust access controls
-  Auditability
-  Compliance with regulations (e.g., GDPR, FINRA, etc.)
-  No exposure of sensitive data to third-party systems



# Generative AI is putting your data at risk

Many enterprises initially banned ChatGPT and similar tools due to risk of confidential data leaks



← You don't know where your data is

← You don't know what they're doing with your data

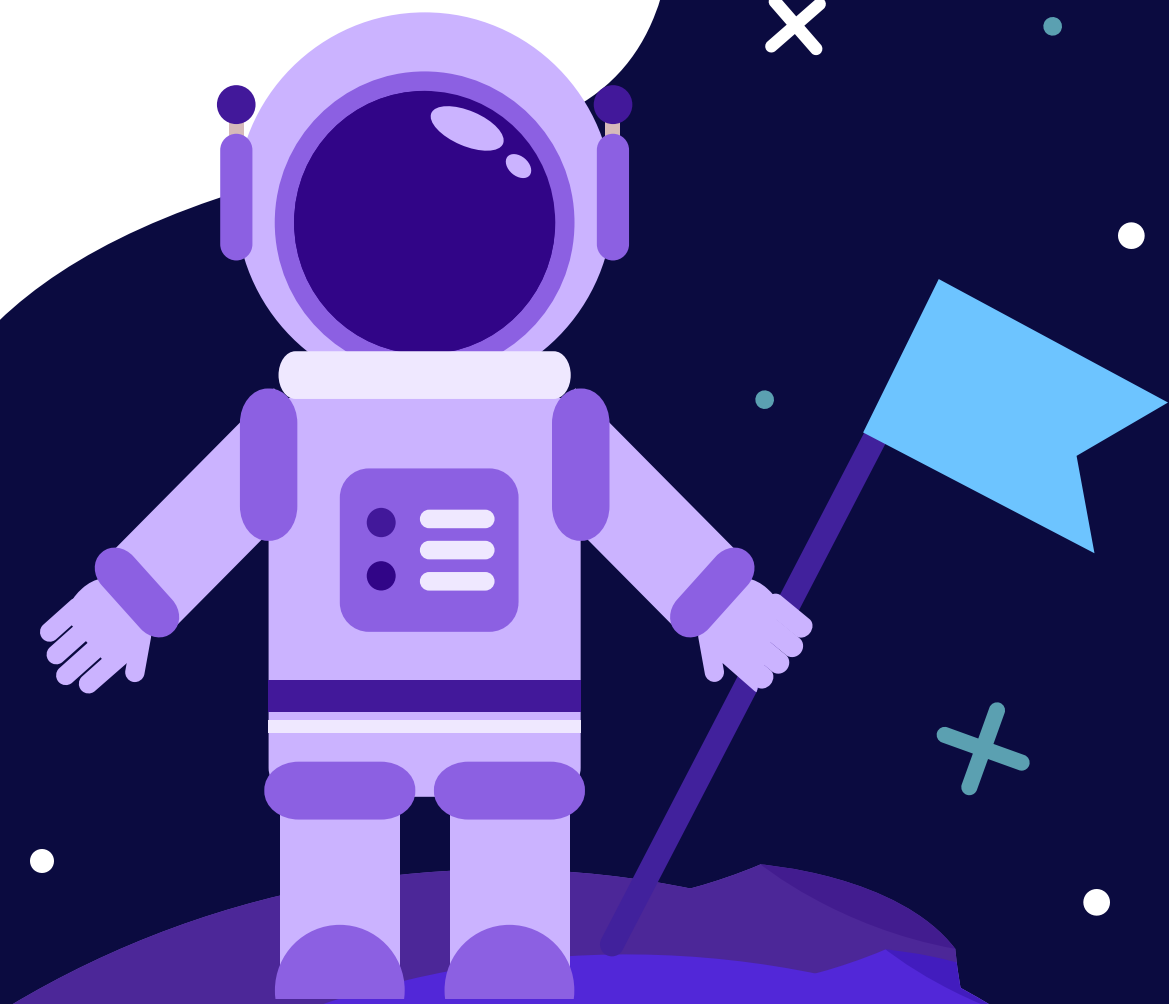
← You don't know what backdoors are open in the model

← You don't know in which data center your data is being stored

# WHAT IF YOU COULD TAKE ADVANTAGE OF **GENERATIVE AI** THROUGH:


- Your own data center or cloud environment
- Increased privacy
- Full regulatory compliance

## IN ONE PLATFORM?



# Introducing NodeShift, Your company's private ChatGPT

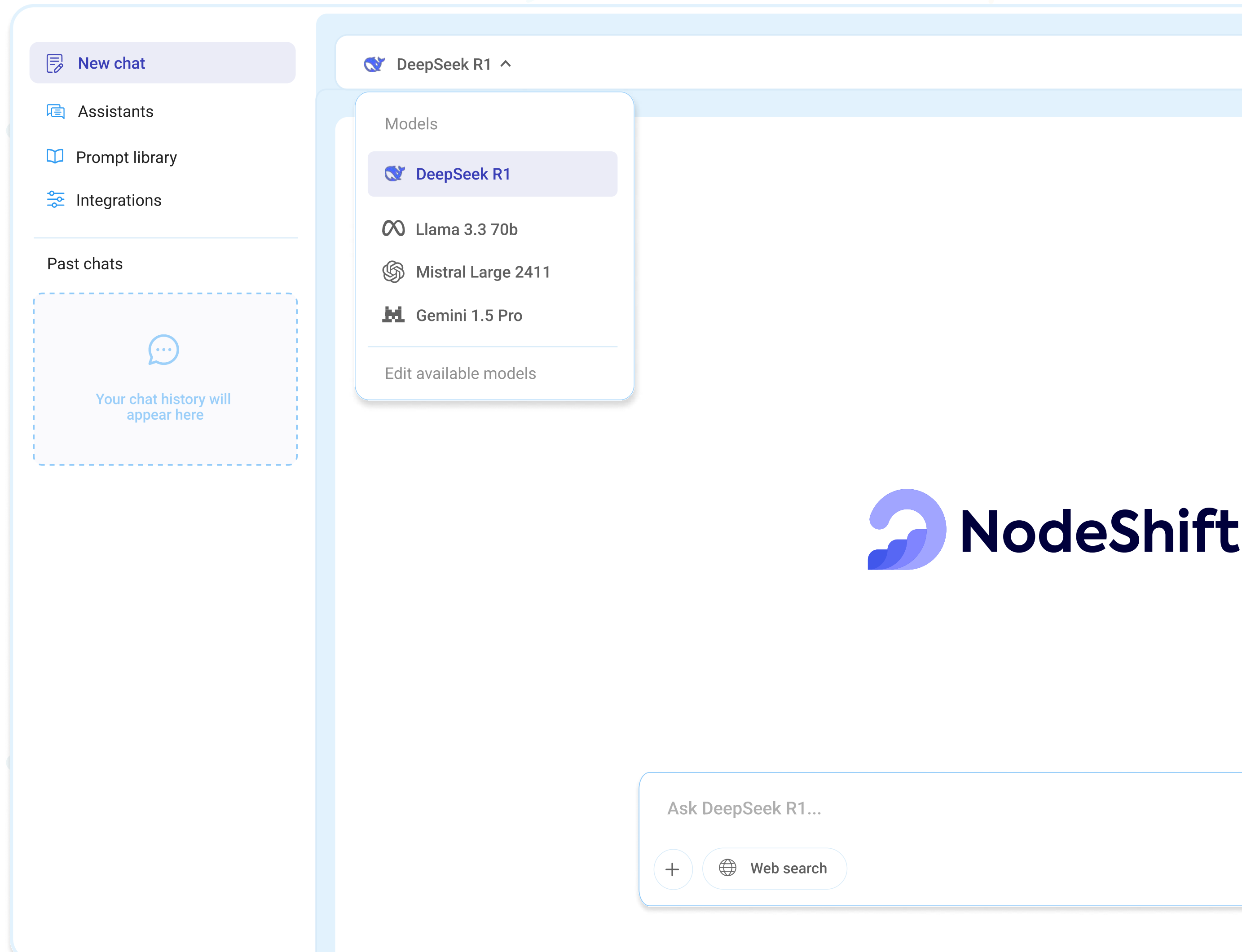
 **Private AI Chat:** ChatGPT-style assistant, fully behind your firewall

 **AI Workflows:** Automate tasks with custom agents, human oversight built-in

 **Enterprise Data Integration:**     

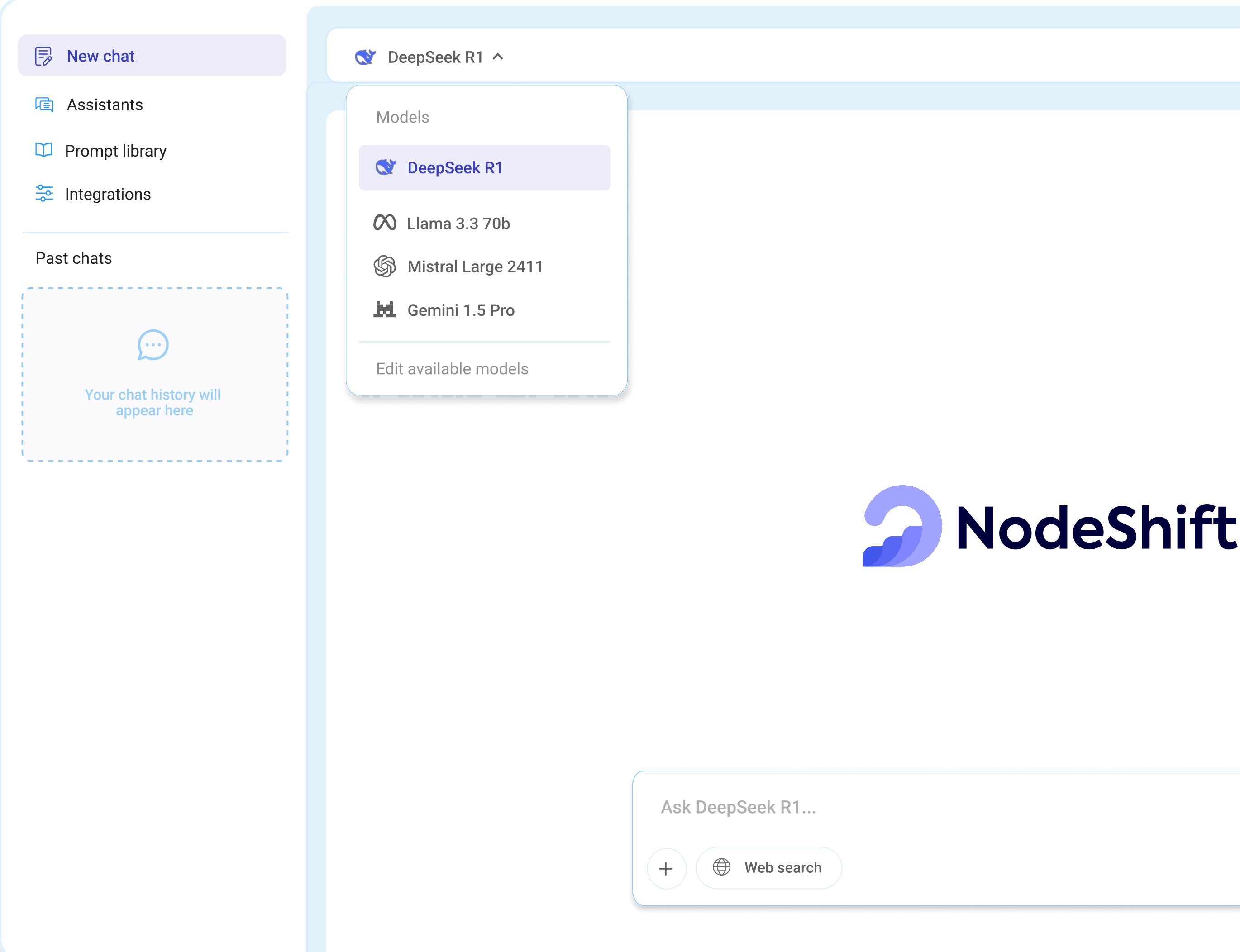
 **Enterprise Grade Security:**   

 **On-Prem & Cloud Deployment:**     
or Data Center



# Over 140+ AI Models available in your environment

Name	Parameters
DeepSeek R1	671B
Phi4	14B
Falcon	40B 180B
Llama 3.2	1B 3B
Llama 3.3	70B
OLMo 2	7B 13B



The screenshot shows the NodeShift AI interface. On the left is a sidebar with navigation options: 'New chat', 'Assistants', 'Prompt library', and 'Integrations'. Below these is a 'Past chats' section with a dashed box containing the text 'Your chat history will appear here'. On the right, a dropdown menu for 'DeepSeek R1' is open, showing a list of models: 'DeepSeek R1', 'Llama 3.3 70b', 'Mistral Large 2411', and 'Gemini 1.5 Pro'. At the bottom right, there is a chat input field with the placeholder text 'Ask DeepSeek R1...' and a 'Web search' button.



On-Prem & Cloud Deployment:



or Data Center






# Connect your tools to NodeShift

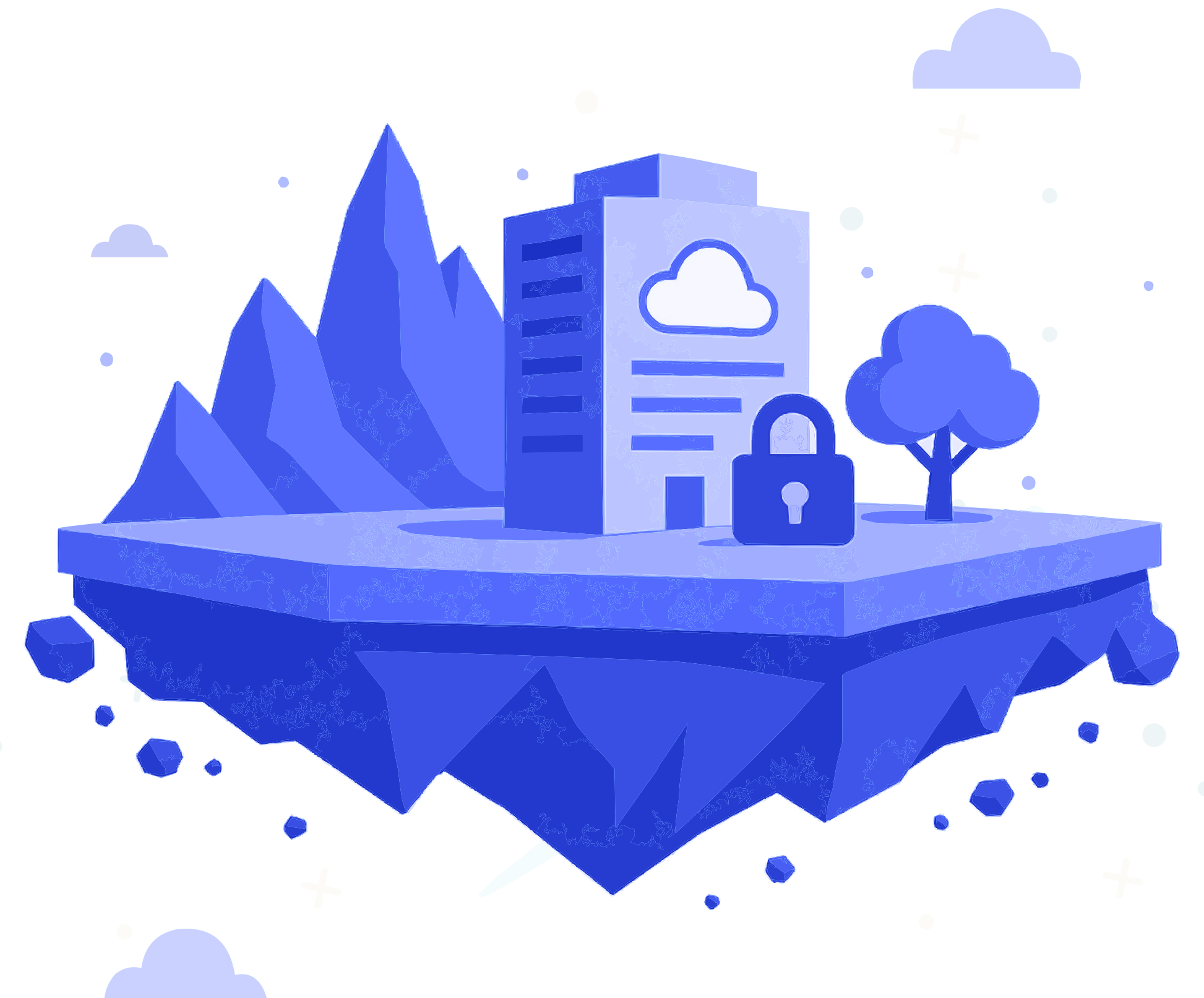
Use NodeShift to manage your go-to work apps and handle everything in one place - kick off tasks, search files, and keep data in sync.



**80+** enterprise software  
connections with NodeShift AI

# 100% GCC DATA RESIDENCY

Country	Regulation Name	NodeShift Compliance
 <b>Saudi Arabia</b>	PDPL (Personal Data Protection Law, Law No. M/19 of 2021)	<input checked="" type="checkbox"/> Fully Compliant
 <b>UAE</b>	PDPL (Federal Decree-Law No. 45 of 2021 on Personal Data Protection)	<input checked="" type="checkbox"/> Fully Compliant
 <b>Qatar</b>	PDPPL (Law No. 13 of 2016 on Personal Data Privacy Protection)	<input checked="" type="checkbox"/> Fully Compliant
 <b>Bahrain</b>	PDPL (Law No. 30 of 2018)	<input checked="" type="checkbox"/> Fully Compliant
 <b>Oman</b>	PDPL (Royal Decree No. 6/2022)	<input checked="" type="checkbox"/> Fully Compliant
 <b>Kuwait</b>	No comprehensive PDPL yet (CITRA handels telecom privacy)	<input type="checkbox"/> Not Applicable



# Departmental Use Cases

 **Legal**

- Summarize lengthy contracts
- Draft and review legal documents
- Perform automated due diligence

 **Operations & Support**

- Summarize operational reports and incident logs
- Support customer service agents with rapid, accurate responses
- Instantly retrieve procedures and policy details for operational queries.

 **Procurement**

- Rapidly analyze and summarize key RFP terms
- Automate drafting of negotiation briefs
- Seek specific content from old agreements

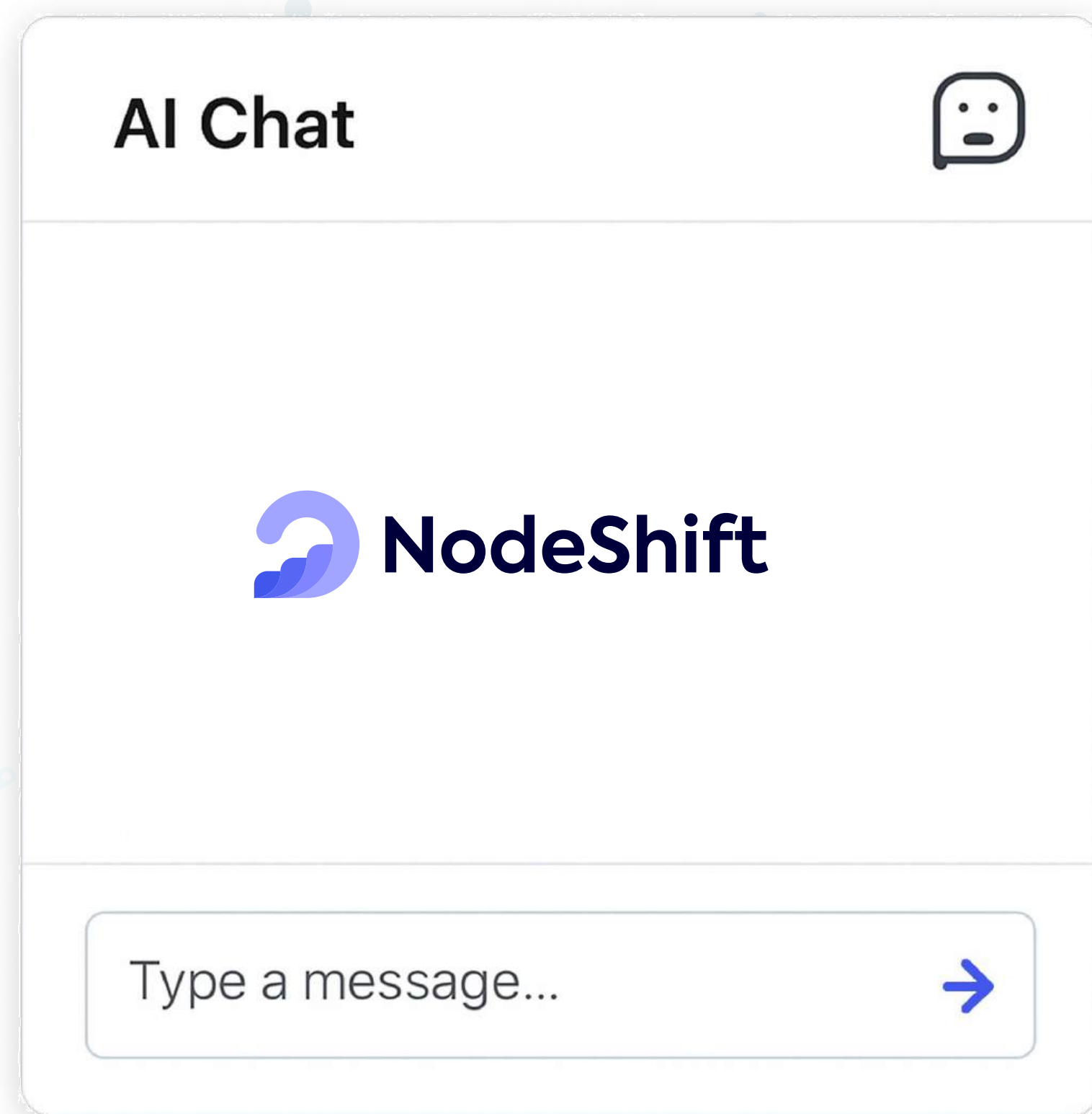
 **Compliance & Risk**

- Monitor and summarize regulatory updates
- Keep internal compliance documentation aligned
- Detect anomalies or potential fraud

 **Human Resources**

- Internal chatbot to answer employee FAQs about policies, onboarding, and benefits.
- Summarize employee feedback surveys, job descriptions, and training materials.
- Provide 24/7 AI-supported onboarding

So simple **anyone** can use it,  
the payoff is immediate



**Business value in weeks, not years:**

- ↑ Save 2 hrs/day per employee on search, writing & formatting
- ↓ Cut costs by 65% vs SaaS tools
- ✨ 90%+ adoption love in week one

# Customers

“NodeShift makes it easy for developers to build their business applications securely in the cloud all while significantly reducing costs. They took advantage of advancements in applied cryptography and distributed computing to make something awesome.”



**Ron Highet**  
Commercial Lead



“Deploying Virtual Machines at scale in a few clicks very cheaply without any knowledge makes NodeShift a truly powerful partner.”



**Ralph de Wargny**  
Director



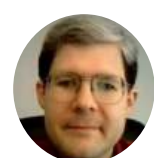
“We’re running our VPN service through NodeShift, enabling massive cost savings in Eastern Europe.”



**Irv Simmons**  
Director Ops



“Running Android Team Awareness Kit (ATAK) on top of NodeShift enabled us to diversify the data center coverage we have for emergency situations.”



**Craig Hoff**  
CTO



“We started using NodeShift in the early stages as a startup, now with hundreds of thousands of followers behind our back, still satisfied to be growing within the NodeShift ecosystem.”



**Naman Kabra**  
CEO NodeOps



“We managed to reduce our compute Virtual Machine costs by 65% compared to DigitalOcean...”



**Alex Cohaniuc**  
Director Data



# Qareeb + NodeShift

## UAE Ministry of Economy Backs NodeShift's Partnership with Qareeb Data Centres



Qareeb deployed NodeShift software in 17 data centers across:



Kingdom of Saudi Arabia



Oman



United Arab Emirates



Bahrain



Qatar



Kuwait



# Meet the Team

## Former Cisco Engineers Aim to Challenge The Status Quo In Cloud Services With Fresh Funding of \$3.2M

BY TEODORA ATANASOVA | 22 FEBRUARY 2024 | 2 MINS READ



As seen on:



Forbes

## Team's Background:



UNIVERSITY OF  
OXFORD



Microsoft



TESLA



HQ & Office in **Abu Dhabi**



Office in **Doha**



20+ engineers



# NodeShift

Let's have a chat!

[mihai@nodeshift.com](mailto:mihai@nodeshift.com)

Address: Floor 15, Al Khatem Tower, Abu Dhabi

Number: +971 555 905 293

