

EXECUTIVE MEETING ROOMS 2025  
**EMR-HALL 2.1**  
**Self-furnished 8 Pax**

—  
**V01** | November 2024



All rights reserved. No reproduction of this document is permitted neither total or partial.

# Layout Self-furnished 8 pax

BASIC NEEDS ARE COVERED AND THE CLIENT HAS THE FREEDOM OF PERSONALIZING THE ROOM

## Room Package

### SELF-FURNISHED 8pax

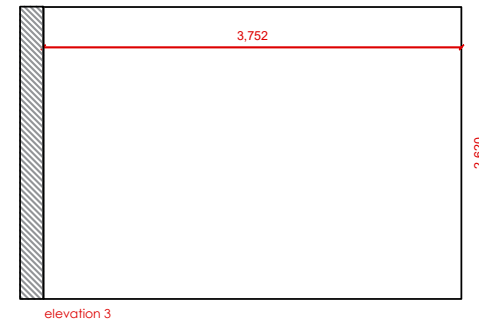
- Room Signage: Nameplate in the corridor
- Carpeted floor (no optional color)

## SERVICES PROVIDED BY FIRA BARCELONA

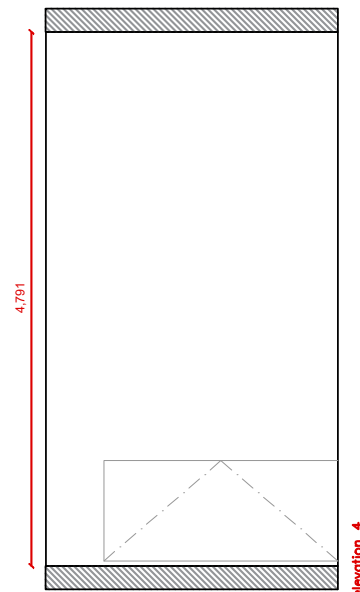
- Lockable lock
- 1 x Laptop connection
- Wi-Fi (not part of this specification)
- 1 x 50-55" TV Screen, table support
- Power sockets in the walls (0,6kw available)

Only in Hall 2.1

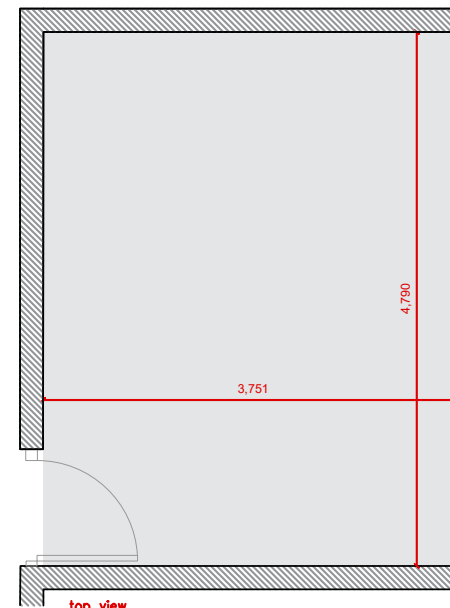
One glass wall



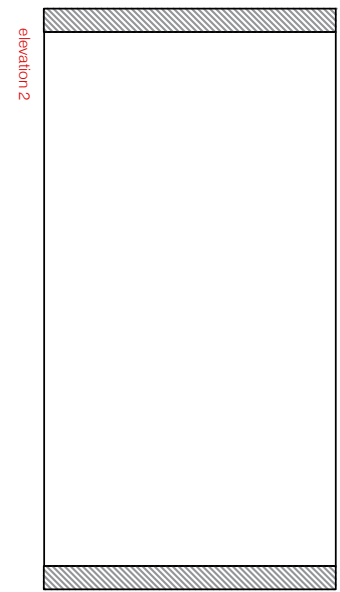
elevation 3



elevation 4



top view

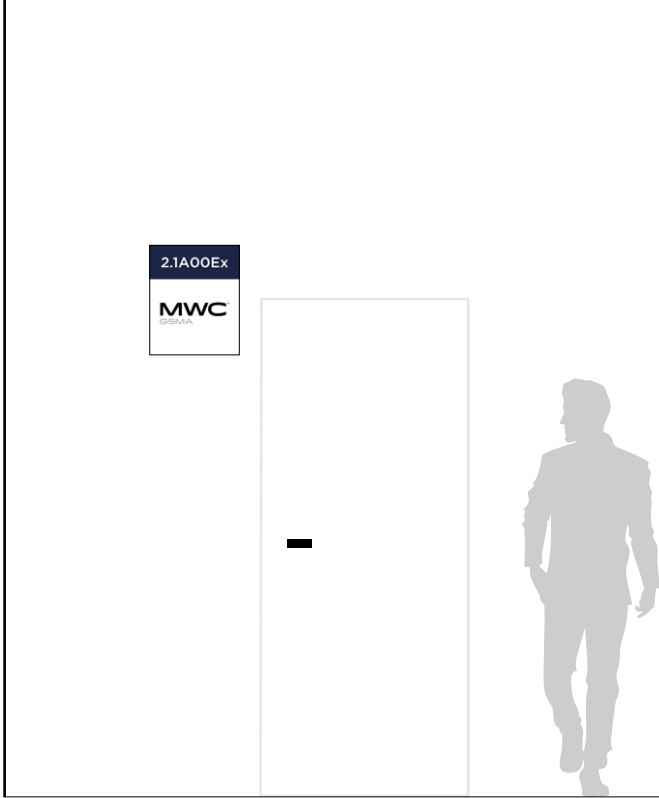


elevation 2

! (\*) If extra power is required, please contact Fira

\*Please check out your location in the general layout.

NAMEPLATES  
INFORMATION & DETAILS

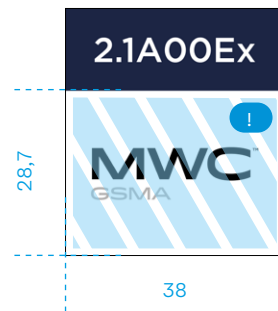


Standard model nameplates with logo:

WITH LOGO



Available branded area: **38 X 28,7cm**



**Attention:**  
For special request, please contact ServiFira

Standard model nameplates without logo:

**!** **Attention:**  
Only if we don't received the customer's logo on time.

WITHOUT LOGO



Available text area:  
**Max 91 characters**



**Company name is required**

Thank you!  
☺