

3D, 2.5D, 2D DIGITAL MAPS OF MEXICO

**1M RESOLUTION
3D MODELS
ARE AVAILABLE
FOR ANY CITY
WITHIN 1 WEEK**

FOR 5G NETWORKS PLANNING
AND OPTIMIZATION

DELIVERED GEODATA:

Digital Terrain Model

Digital Surface Model

Clutter/Land Use Model

Linear objects

Buildings 3D Model

3D Trees Model

3D Bridges

Orthoimagery

Mexico City
Puebla
Guadalajara
Monterrey
Mérida
Saltillo
Aguascalientes
Hermosillo
San Luis Potosí
Culiacán
Querétaro
Morelia
Durango
Tuxtla Gutiérrez
Tepic
Cuernavaca
Villahermosa
Pachuca
Oaxaca
La Paz
Campeche
and others.....



DATA VINTAGE: 2023

PRODUCED FROM THE LAST AVAILABLE HIGH-RESOLUTION STEREO SATELLITE IMAGES
52,000,000 3D LoD 1.2, LoD 1.3 Buildings across the entire country

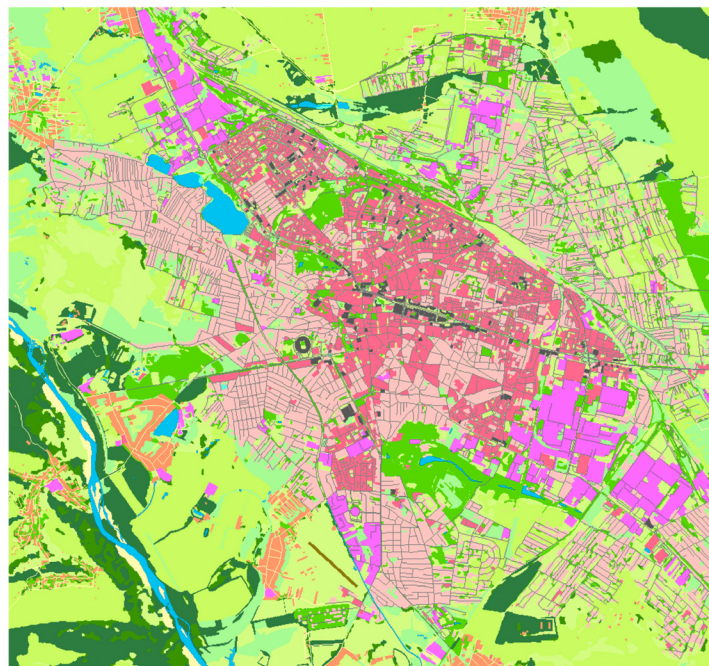
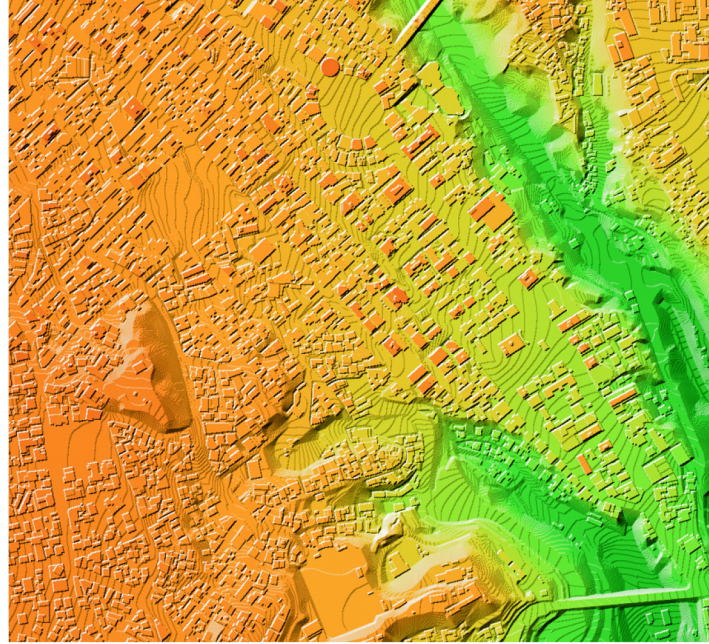
**2D, 2.5D AND 3D MODEL OF 5M RESOLUTION ARE AVAILABLE FOR ANY PART
OF MEXICO AND COUNTRYWIDE COVERAGE**

GEODATA FOR MEXICO

PRODUCTS TAILORED FOR 5G ROLLOUT

We create high-resolution and high-quality next-generation Digital Mapping Data to serve 5G development and increase the efficiency and accuracy of decision-making within cities and across the nation

WE SUPPORT ALL RF-PLANNING TOOLS FORMATS
OUR DATA ARE COMPATIBLE WITH ANY PROPAGATION MODEL



Our geodata for Mexico will allow to start your planning process immediately

We offer ready-to-use 3D maps for any city, 2D and 2.5D maps for urban and regional planning for the entire country

We provide:

- Free data for testing
- Free data for pilot project
- Optimal pricing
- Fast delivery
- Meeting your technical requirements



4509 32nd Avenue West, Seattle, WA 98199
e-mail: ron@boodmoe.com
www.boodmoe.com