



# Unique Requirements Need a Unique Solution.

## Meet floCORE.





# Why floLIVE?

floLIVE provides a secure, cloud-native core network to Mobile Operators and IoT Service Providers, looking to launch IoT use cases and value added services for their customers. They need to ensure that their infrastructure can support diverse IoT devices and use cases, as well as handle complexities that range from national regulations over core network vendors, to consistent security, performance and latency on a global scale.

The floCORE solution is a 2G/3G/LTE/5G core mobile network that comprises all necessary Network Elements to build and operate disparate business models, and at unparalleled scale.

To meet tomorrow's IoT challenges such as high performance and longer battery life, floCORE supports new and emerging narrowband technologies including LTE-M/CAT-M and NB-IoT.

## What Makes floCORE Such a Head-Turner?



### Integrative and modular

We've developed a rich REST API suite that enables full control of all network elements, with easy decoupling and replacement.



### Elastic Scaling

Your deployments grow right alongside you, utilizing the latest microservices technology, DPDK, and Kubernetes to provide elastic, behaviour-based scaling.



### Highly Adaptive

Any business user becomes a citizen developer, with a low-code/no-code Service Creation Environment and graphical user interface, reacting to your customers and market trends in hours.



### Low footprint

Our performance-aware software design ensures optimal resource utilization, resulting in a fully featured core network suite that can run on as little as three Virtual Machines for supporting as many as 1M active subscribers.



### Quick Time-to-market

The combination of a software-only solution and simple-yet-comprehensive configuration tools allows for fast, remote installation and integration with minimal resources - both human and hardware.



### Network Slicing

With 5G-based network slicing capabilities, floCORE gets you ready to conquer the ever-changing IoT ecosystem, by providing dedicated slices to different IoT use cases, for an optimized IoT network experience.



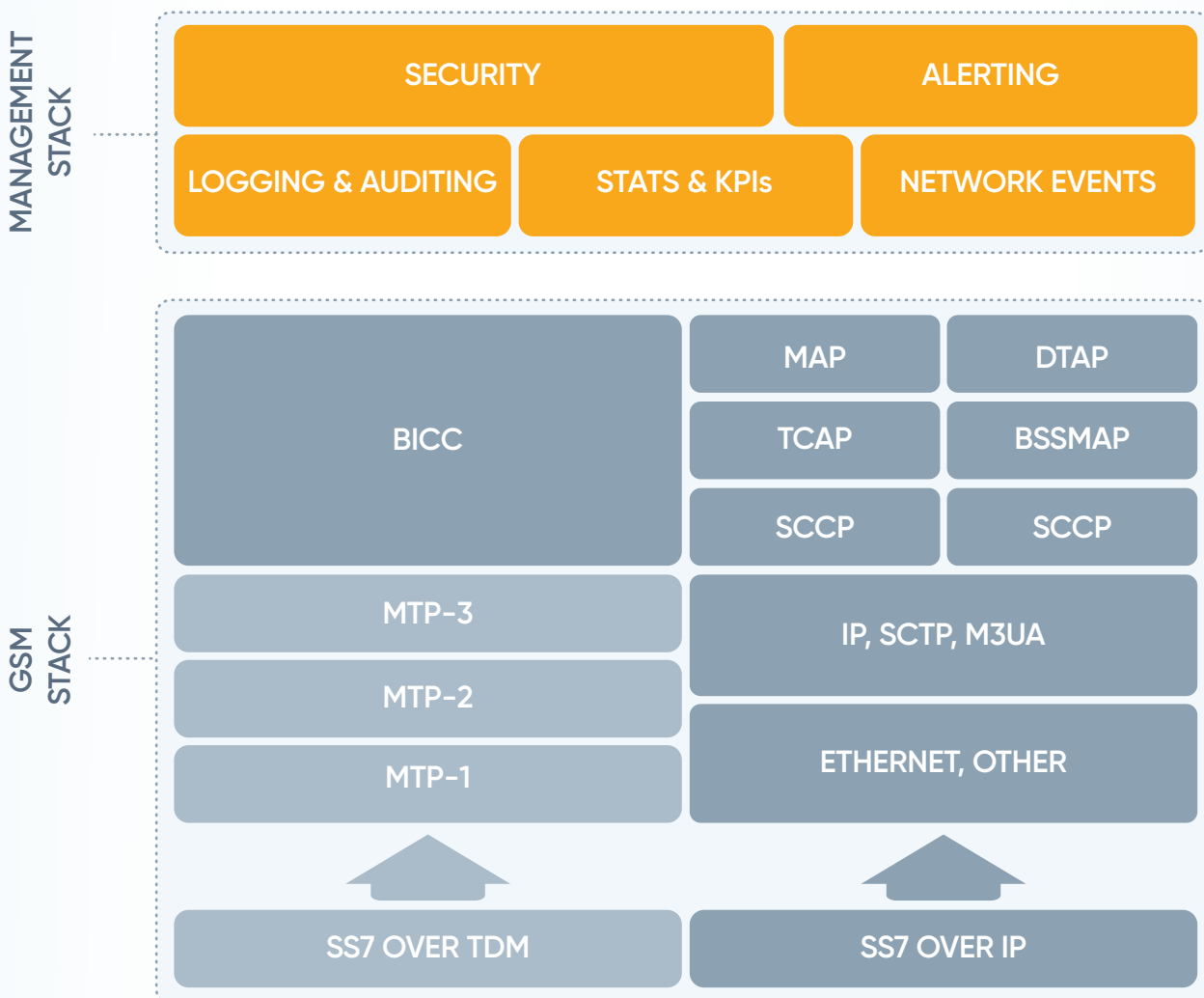
### Full technology ownership

floLIVE answers to no-one, having fully developed our technology in-house over 15 years of blood sweat and tears. That means we're as flexible as they come.

# A Truly Cloud-Native Core

floCORE is a software-based core network that supports multiple standards and protocols by its very design, as well as supporting cloud deployments such as AWS, VMWare, OpenStack and KVM alongside container-based deployments such as Kubernetes and Docker.

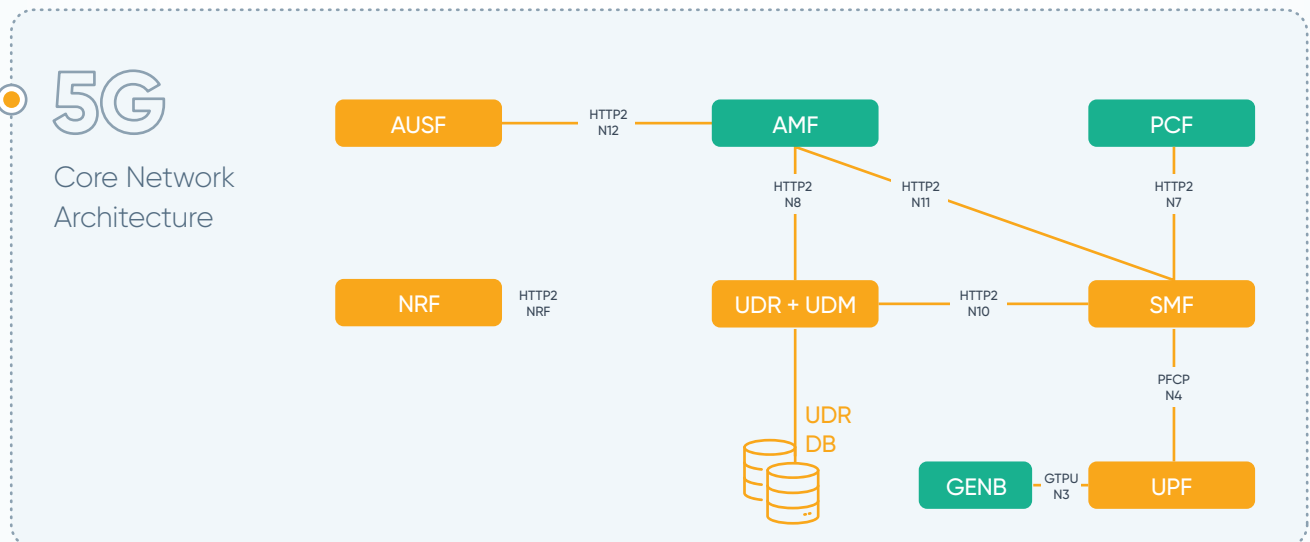
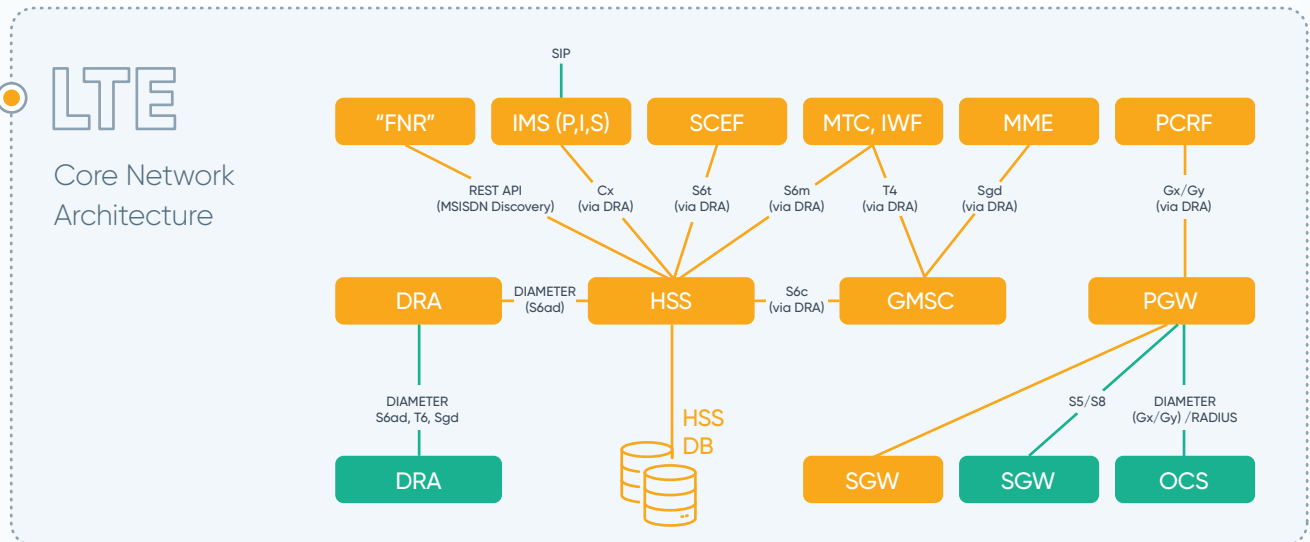
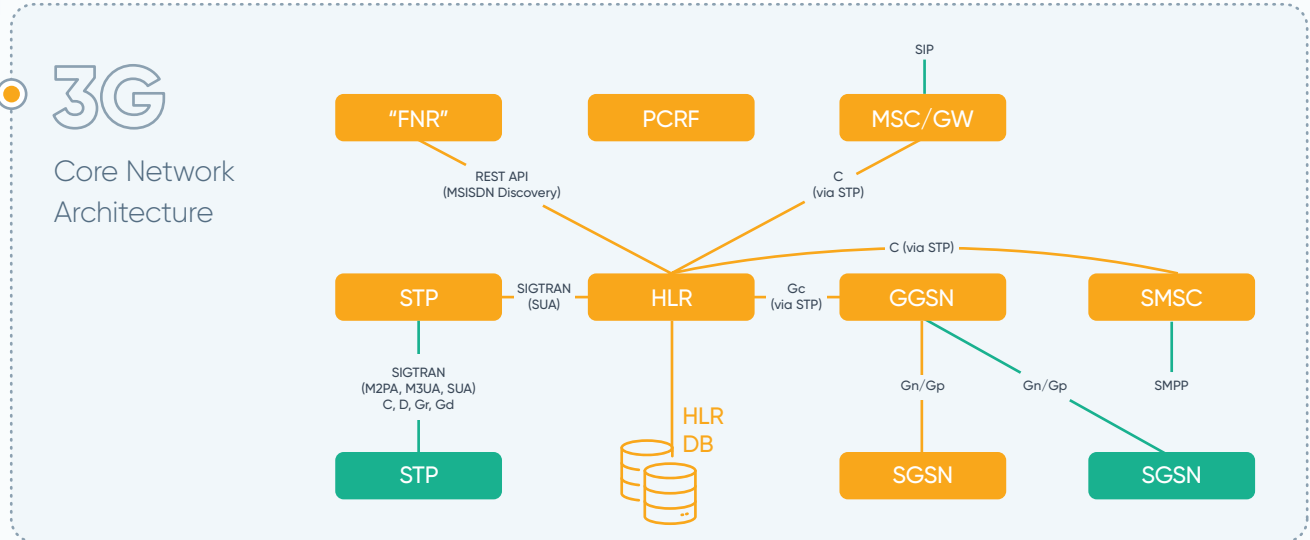
Unlike most core network vendors, who provide a mixture of legacy Network Elements (NEs) patched together to form an alleged "unified system", the NEs comprising floCORE were all designed and built on top of the same software infrastructure and framework. This means that they all share the same configuration tools and logic, management capabilities, logging mechanisms and KPI reporting to external monitoring systems.



This uniformity across all elements contributes to the ease of deployment and adds true IT integration, uniform day-to-day operations, efficient management and control and the ability to troubleshoot across all networks.

# Core Network Elements

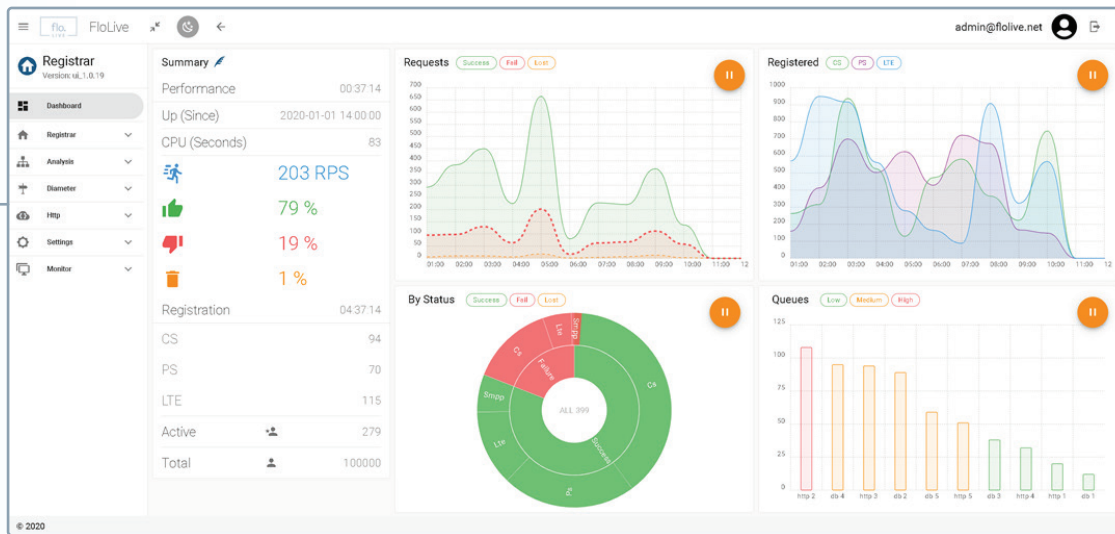
5G Core includes the following Network Elements:



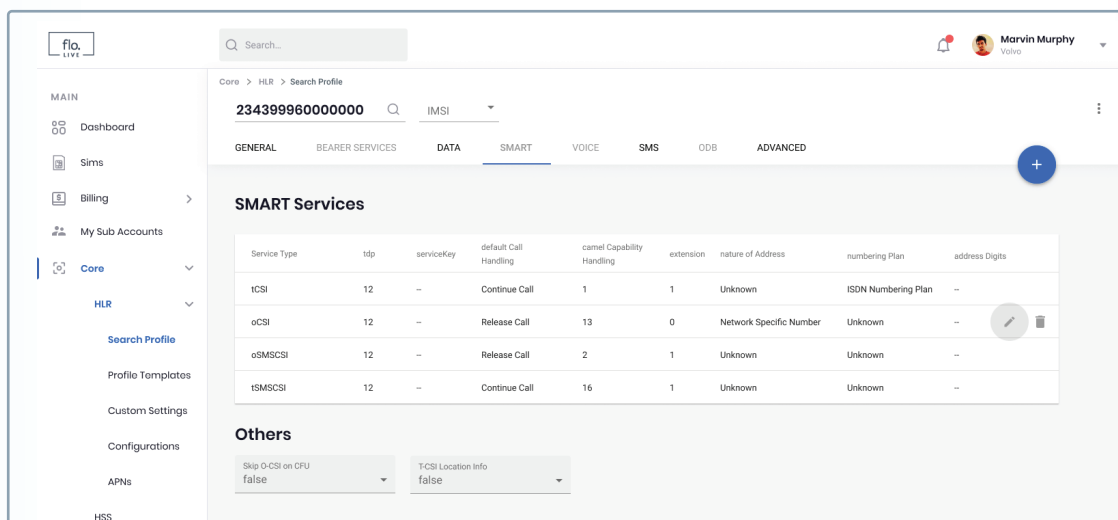
# Management Made Easy

A modern, web-based management portal makes the lives of networking and IT managers as well as customer support agents a lot easier and more effective.

Our centralized web-portal allows you to oversee the deployment, operation and monitoring of your core networks. Network operators and system administrators can see everything that they need at a glance from one dashboard, including the technical and operational status of each instance, and granular information and analysis about performance, CPU, customer requests, and more.



It's easy to set up the system, changing configurations as and when you need to meet new and emerging use cases. Built for the business user not just the technical stakeholder, anyone can take charge of the portal with ease.



Furthermore, our core network can be augmented with either a full Business Support System (BSS) suite or specific billing elements necessary to run and operate your network operations.

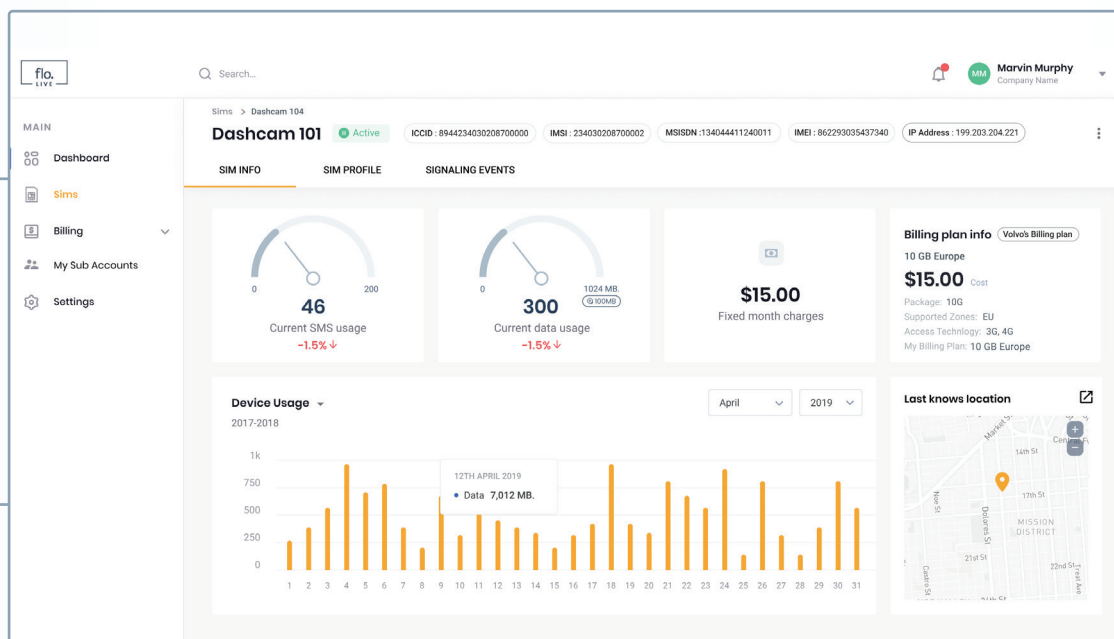
# Customer Service

To provide the best customer support, Customer Service Representatives (CSRs) need up to date information that's comprehensive, and yet easy to understand.

With floCORE, every NE provides real-time reports of all networking and signalling events. These can be accessed by the MNO's CSRs at any time, and understood without the need for the support staff to have in-depth technical knowledge, or expertise in SS7.

In turn, this insight allows CSRs to excel at their jobs, providing fast support, acting with efficiency and autonomy without the need to get information or buy-in from other teams, and resolving ticket requests in a much shorter amount of time.

The screenshot below is a great example of the kind of dashboard that CSRs will have access to. It shows a real-time view of the network and all signaling events. One dashboard can be utilized by both customer support and network engineers, offering granular technical information that is extremely easy to glean answers from.



## We're All About Performance

As a software-based technology, there are very minimal hardware requirements, getting you up and running faster, without sacrificing on performance. We want to partner in your success, so we scale as you grow, allowing you to pay for exactly what you use, adding instances as and when you need them, with great quality assurance and performance levels from day one.

# Take Security Further

Many of our Mobile Private Network customers have very specific security requirements, and we're proud of our security-by-design approach for both the network and its subscribers. First, we start with firewalls, VPNs and IPsec tunnels between the RAN, floCORE and the web consoles.

Then, on the customer side, online charging provides tight control that allows our users to see fraud attempts ahead of time, identify the first signs of a security breach, and gain insight into any suspicious or unusual behaviors that could signal a threat. Advanced security policies that can be implemented, include:



- ✓ Locking a single IMSI to a specific SIM
- ✓ Blocking incoming communication from the public network
- ✓ Blocking SIM usage on unauthorized devices
- ✓ Limiting IP addresses and ranges for specific IMSIs
- ✓ SMS verification

Furthermore, floCORE implements numerous inherent security measures that make any attempt to retrieve or manipulate subscriber information an impossible mission.

# Benefits for Mobile Operators, Subscribers, and IoT Service Providers

## ● Reduce TCO

Offered as-a-service, we're all about reducing your Total Cost of Ownership. That means all OPEX and zero CAPEX, helping you spend where it will show the most value.

## ● Ensure High Availability

We support geo redundancy & autonomous healing capabilities, guaranteeing 'always-on' availability for subscribers.

## ● Delight Your Customers

Fully in control of your own core networks, easily meet SLA, speed up maintenance and resolution times, and inspire customer loyalty for long-term relationships.

## ● Streamline Security and Compliance

Your security and corporate policies – translated to your IoT deployments. No disconnects, no add-ons, and no gaps or blind spots.

## ● Make IoT Profitable

Sidestep IoT-only hurdles such as low ARPU per device and high signalling behavior, and onboard a core network solution that is built for IoT from day one.

## ● Scale as you Grow

Match your resources accurately to customer demand, and ensure you hit on the Next Big Thing without risk, over expenditure, or delay.

## ● Keep Use Cases Separate

Manage different IoT use cases, including Massive, Broadband and Critical, with a core network separated out and targeted to each business need.

floLIVE is a secure, cloud-native connectivity solution backed by strategic investors 83North, Dell Technologies Capital, Saban Ventures and Qualcomm Ventures LLC. Having fully developed its technology in-house over the past 15 years, floLIVE has full technology ownership, promising the best flexibility on the market for its customers. This enables the support of mobile operators, IoT service providers and global enterprises looking for seamless global coverage.

The platform comprises distributed core networks that provide local connectivity while being centrally managed and controlled over the cloud.

This unique approach enables manufacturers to benefit from highly-performant, secure and regulatory-compliant local connectivity with the flexibility and elasticity of a cloud-native platform. floLIVE's solutions are offered as-a-service, in a pay-as-you-grow business model.



## Let's connect

Get in touch to discuss how we can meet your IoT requirements. We're sure to surprise you.

✉ [info@folive.net](mailto:info@folive.net)

☎ [+44 20 3637 9227](tel:+442036379227)

