



Your Company for Innovation

**YOUWORKFORCE 2025**  
**COMMUNICATION & WORKPLACE SAFETY**



# YouWorkForce

Manage all work teams quickly and efficiently,  
a modular framework to meet every need





*A fully customizable solution for the intelligent and organized management of the workforce*

- *Technological assessment*
- *Device inventory management*
- *Internet of Things*

An innovative solution that combines **ease of use**, **reduced operational costs**, and **continuous connection between the headquarters and field teams**.

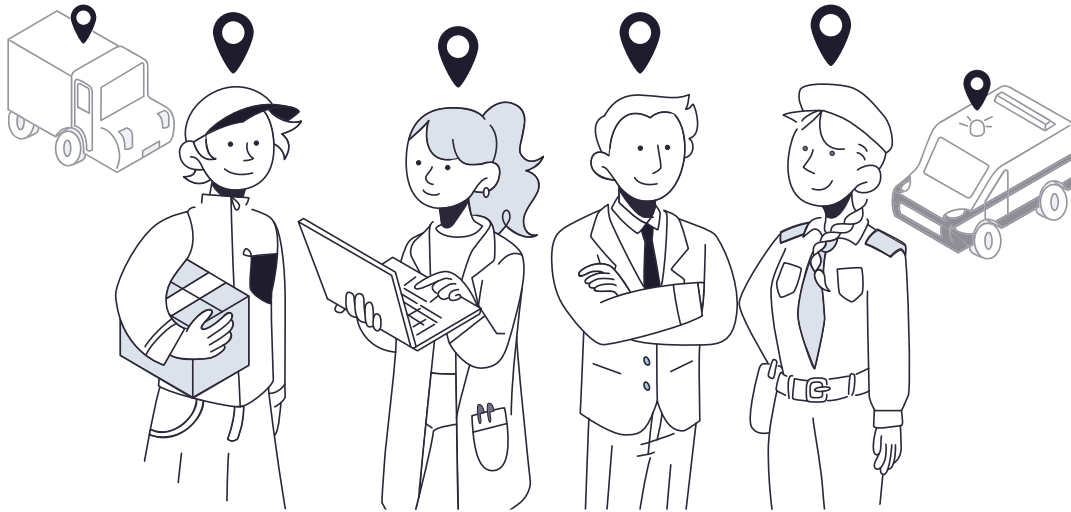
YouWorkForce offers a wide range of modular and customizable features for smarter workforce management.

This B2B framework, equipped with an operations center and a mobile app, surpasses traditional radio frequencies by adopting 4G/5G systems, **ensuring faster, more stable, and efficient communications**, optimizing the management of tasks and operations.





*A modular framework designed to adapt to every need, integrating advanced features for complete and tailored customization.*



 **Tracking and localization**

Innovative solutions for tracking and localization, ensuring precision, reliability, and real-time control.

 **Safety and emergency**

Advanced solutions for safety and emergency, designed to protect people and environments with rapid and effective interventions.

 **Organization and management**

Intelligent tools for organization and management, optimizing processes and improving operational efficiency.



# **INTEGRABLE MODULES**

Enhance and customize the product



## Reduce communication times with staff and between operators

YouTalkie is YouCo's app designed to improve business organization by reducing communication times between staff and teams.

With YouTalkie, the smartphone becomes a professional walkie-talkie, ensuring constant interconnection between the company and operators.

The solution includes an operations center and a mobile app for optimized voice communication management.

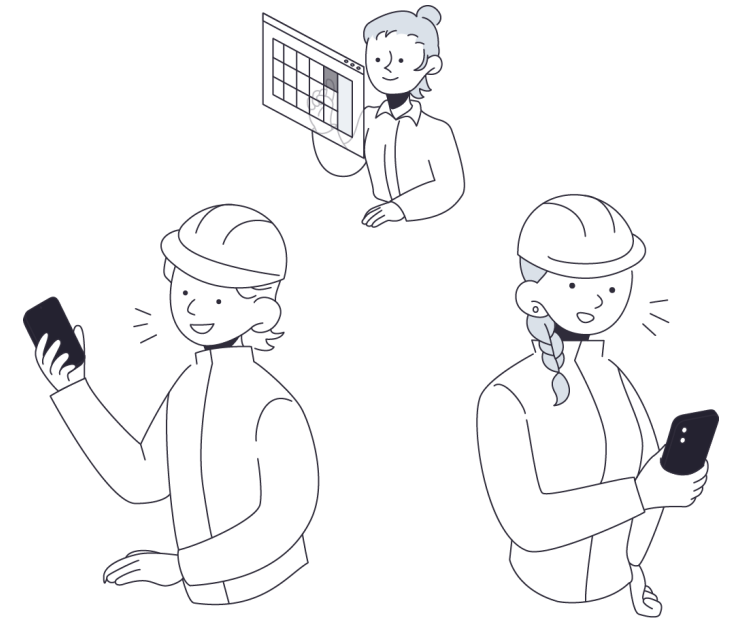
### Photos and Text Notes

To simplify and accelerate tasks, voice communication can include photos and written notes: the operator can take photos directly from the device and send them with annotations to the recipient.

### Two-Way Voice Notes

The core of YouTalkie is its system for instant voice messages, which can be recorded anywhere via the mobile app and sent immediately to the recipient. Sending voice messages is simple and immediate, and it can be done across multiple channels:

- between individual operators
- between an operator and the control center
- between work groups
- between a work group and the control center and/or manager/supervisor.





## Monitor operator safety in an effective and timely manner

YouManDown is a module of YouWorkForce designed to monitor the safety of operators in hazardous situations, ensuring immediate intervention in emergencies such as falls or prolonged inactivity.

The app **leverages mobile device sensors to detect abnormal movements and send SOS alerts**, enhancing individual protection and helping companies comply with workplace safety regulations.

### **Types of alarms**

**The absence of movement for too long or a sudden fall activates the "man down" functionality.**

Prolonged pressure of a button (panic button) activates the SOS signal.

**The device sounds until presence is confirmed within a preset time;** otherwise, it will send an alarm to all other users. The alarm occurs via Phone Call/SMS/E-mail/Push To Talk (YouTalkie), configurable to one or more targets set by priority.

*Especially useful in high-risk work environments such as construction sites, heavy industries, operations in confined or isolated spaces, where operators may find themselves working alone or in hazardous conditions.*

# YouManDown

## Smartphone & Tablet

The solution can be installed on devices equipped with Android or iOS operating systems with Accelerometer and Bluetooth 4.0+LE chipset (if Indoor Proximity is active).

It can also be used on rugged terminals and/or with specific characteristics, for example relating to use in workplaces with potential risk (ATEX zones, explosion risk...).

## Wearable

The platform also supports wearable devices equipped with SIM capable of detecting absence of movement, sudden fall and/or exceeding inclination angle. **It is possible to configure the sensitivity of immobility and inclination detection**, adapting it to the specific needs of the client.

The wearable also features manual emergency buttons that allow the operator to actively signal an emergency situation.



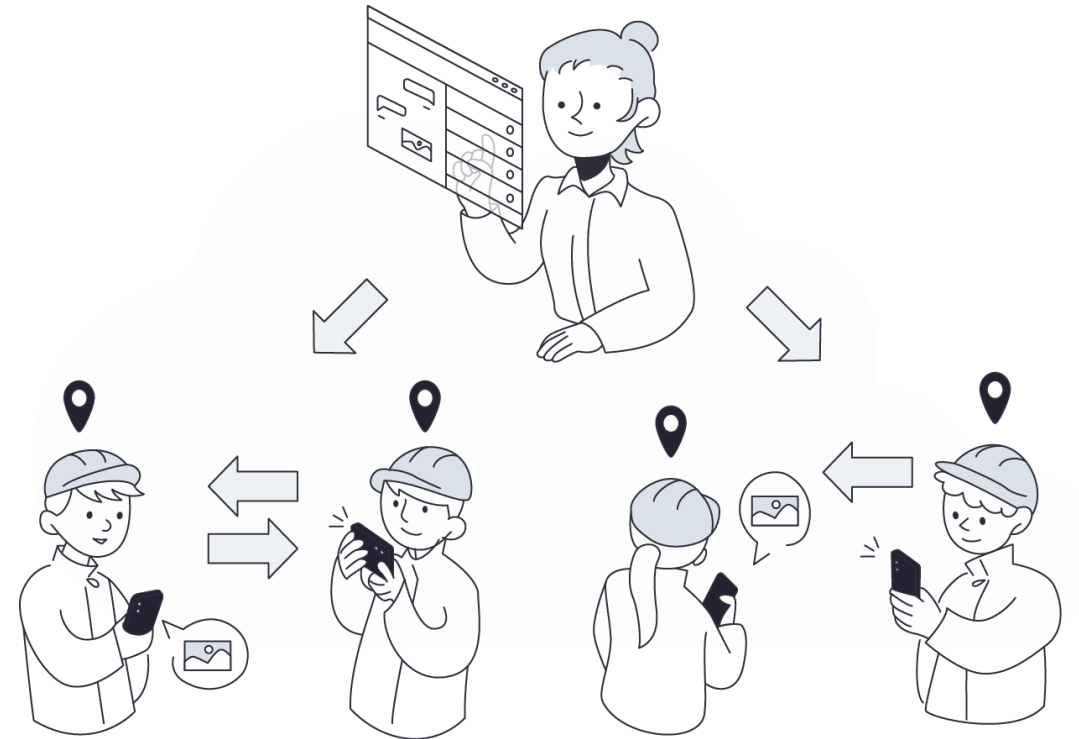


# YouMessage

## *Advanced messaging within work teams*

By leveraging our dedicated web portal and mobile app, the work team will benefit from a series of **features designed to optimize collaboration and improve group work efficiency.**

YouMessage is the ideal choice for work teams looking for a comprehensive messaging application, designed to improve collaboration and accelerate results.



## **YouMessage**

*The key features of YouMessage for work teams include:*

### **User and Role Management**

Assign specific roles to users for more efficient management of conversations and responsibilities within the team.

### **Instant Communication and Work Groups**

Facilitates collaboration through instant communication, in one-on-one conversations and/or in groups.

### **Archiving and Supervision**

Keeps track of your team's conversations through centralized archiving on the web portal.

### **Workplace safety and emergencies**

Simplifies information exchange with the ability to send and receive files and documents directly through the platform.

### **Integrated Notifications**

Receive instant notifications to stay updated on team activities, whether it's new messages or read confirmations.

## YouCo Italia

MILANO Headquarters  
Viale Tunisia, 50  
20124 - Milano

ROMA Branch Office  
Via Boezio, 4/C -  
00193 Roma

BARI Branch Office  
Tecnopolis PST  
Str. P.le per Casamassima, Km. 3  
70010 Valenzano - Bari

R&D Lab ROVIGO  
Via Porta Adige 45  
45100 - Rovigo (RO)

[marketing@youco.eu](mailto:marketing@youco.eu) / [youco.eu](http://youco.eu)



## YouCo USA

Executive Office  
848 Brickell Avenue  
Miami, FL 33131

Operations Branch  
3785 NW 82 Ave Ste 110,  
Miami, FL 33166

### Certifications



**SV Cert. Group**  
Certified Management  
System ISO 9001  
Certificate n.  
554-IMS-22-Q



**SV Cert. Group**  
Certified Management  
System ISO/IEC 27001  
Certificate n.  
554-IMS-22-IS



**PMI** registroimprese.it  
**INNOVATIVA**