

2025 MWC Barcelona

3 March – 6 March

HALL 5 STAND 5A61

TAIWAN PAVILION

TABLE OF CONTENTS

<u>Organizers of Taiwan Pavilion</u>	02
<u>Aethertek Technology</u>	04
<u>ASRock Rack Inc.</u>	06
<u>Auden Techno Corp.</u>	08
<u>Auray Technology Corp.</u>	10
<u>Edgecore Networks Corporation</u>	12
<u>Groundhog Technologies Inc.</u>	14
<u>IBASE Technology Inc.</u>	16
<u>Industrial Technology Research Institute (ITRI) - Information & Communications Labs</u>	
Division for Intelligent Network Applications and Systems	18
Division for Emerging Wireless Applications Technology	20
<u>NEXCOM International Co., Ltd.</u>	22
<u>Tailyn Technologies, Inc.</u>	24
<u>Ufi Space Co., Ltd</u>	26

Key Contact for Taiwan Pavilion

Communications Industry Development Project Office

Phone +886 2 2543 2538

Fax +886 2 2543 2544

Address 6F, No. 18, Sec. 1, Chang-an E. Rd., Taipei, Taiwan

LinkedIn



Industrial Development Administration, Ministry of Economic Affairs

The Industrial Development Administration (IDA), a key agency under Taiwan's Ministry of Economic Affairs, serves the role of formulating policies and driving growth across industries including information technology, metal & mechanical, consumer goods & chemicals, knowledge services, and sustainable development in Taiwan. Recognizing the transformative power of 5G and Open RAN, IDA actively promotes the development of these critical technologies within Taiwan's vibrant tech ecosystem, ensuring Taiwan remains at the forefront of global telecommunications advancements.

Communications Industry Development Project Office (CIDPO) delegated by Industrial Development Administration, MOEA

Taiwan's supply chain rapidly emerges as a compelling alternative to established network providers. Led by the Communications Industry Development Project Office (CIDPO) delegated by the Industrial Development Administration, the Taiwan Pavilion at MWC 2025 showcases the strength of this dynamic ecosystem. This pavilion features a gathering of leading Taiwanese companies, including Aethertek, ASRock Rack, Auden, Auray, Chunghwa Telecom Labs, Edgecore, Groundhog, iBASE, NEXCOM, Tailyn, UfiSpace, and ITRI. Together, they present a diverse range of innovative solutions that go above and beyond to meet the evolving needs of various vertical industries.



Aethertek Technology

- mmWave Beamforming Antenna Module
- mmWave Test Solution (Including test software, up down converter, shielding chamber, passive antenna..etc.)
- Board Level Test
- Design Service

Aethertek Technology is a global leader in production testing solutions, serving diverse industries such as consumer electronics, automotive electronics, and AI server testing. Renowned for our robust engineering capabilities and exceptional service quality, we are the trusted test solution provider for leading brands and EMS vendors worldwide.

Building on our expertise, we have established a dedicated 5G department, delivering critical technology for the 5G FR2 network market. As a key player in the millimeter-wave industry, we are proud to be one of the few domestic companies specializing in the design and development of advanced 5G millimeter-wave Antenna-in-Modules.

By leveraging cutting-edge technology, strong integration capabilities, and a comprehensive range of testing services, Aethertek continues to expand its impact across industries. Our commitment to innovation and excellence drives us to push the boundaries of technological advancement.

Contact

Phone +886-2-2658-2068
Fax +886-2-2658-2098

9F, No.607, Ruiguang Rd., Neihu Dist.,
Taipei City 114698, Taiwan (R.O.C)

Contact Person

Perry Lin
Director of 5G Business Development
perrylin@aether-tek.com

Website

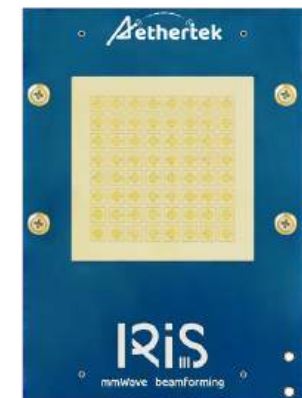
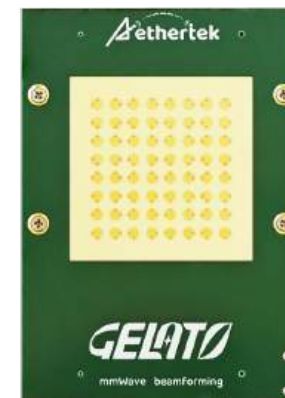
www.aether-tek.com



We will showcase our beamforming antenna module product line, integrated with diverse baseband solutions for a range of mmWave network applications. Aethertek has partnered with Taiwan's leading 5G baseband SoC provider to deliver a streamlined solution for FR2 O-RU, featured as an end-to-end live demonstration in Metanoia's private room at MWC 2025.

Additionally, we will present a unique network structure demonstrating Wi-Fi over mmWave, utilizing our antenna RF module for FWA a solution (PtMP, PtP) tailored to operators in India. Our beamforming technology has achieved point-to-point throughput exceeding 3 Gbps over long-range transmissions.

Aethertek's strengths go beyond system design with mmWave beamforming modules. We also offer cost-effective mmWave production testing solutions, incorporating proprietary software, up/down converters, shielding chambers, and other essential accessories.





ASRock Rack Inc.

- Artificial Intelligence/GPU Server
- Cloud Computing Server
- Edge Server
- Content Delivery Network Server
- Design Service

ASRock Rack Inc., established in 2013, specialized in the field of Cloud Computing server hardware. While inheriting ASRock's design concepts, "Creativity, Consideration, Cost-effectiveness", the company is dedicated to bring the Server Industry out of the box thinking with the passion to innovate. Leveraged by ASRock's growing momentum and distribution channels, this young and vibrant company targets at the booming market of Cloud Computing, and commits to serve the market with user friendly and eco-friendly Do It Yourself Server hardware, featuring flexible and reliable products.

Contact

Phone +886-2-5559-9600
Fax +886-2-2893-1337
Website www.asrockrack.com

4F., No.37, Sec. 2, Zhongyang S. Rd., Beitou District, Taipei City 112, Taiwan (R.O.C.)

Contact Person

ASRockRack_Sales@asrockrack.com
ASRockRack_Marketing@asrockrack.com

LinkedIn



ENHANCE YOUR AI INFRASTRUCTURE FROM EDGE TO CLOUD



ASRock Rack's x86 and Arm-based Server Boards

Your Ideal Solutions for Network Appliances and Servers in Diverse Scenarios



As a leading innovative server company, ASRock Rack drives advancements across its diverse product portfolio, enabling breakthroughs from AI-driven applications to next-generation networking infrastructure across industries such as edge computing, content delivery networks (CDN), cloud services, with a global presence spanning North America, Europe, and Asia.

At MWC 2025, ASRock Rack will address its comprehensive end-to-end product lineup, aimed at enhancing AI infrastructure from edge to cloud. This selection includes the MEC AI, 2U short-depth NVIDIA MGX server, which accelerates generative AI in both enterprise and edge environments, while the liquid-cooled 4U8X-GNR2 and air-cooled 8U8X-GNR2 are built to handle AI training workloads. The other focuses are the 1U8E1S server optimized for content delivery networks, and the 2U4N-F front-access multi-node system, designed for edge data centers. Furthermore, ASRock Rack offers a broad array of both x86 and Arm-based server boards in various form factors, empowering businesses to create customized network appliances and servers for a wide spectrum of AI workloads and modern computing needs.

Auden Techno Corp.

- **Sub-6GHz Antenna Solutions**
High-performance designs for wireless communication
- **mmWave and Satellite Solutions**
Advanced technologies for high-frequency communication
- **Measurement Equipment**
Precise RF testing and measurement systems
- **Testing and Certification Services**
Comprehensive compliance and verification support
- **Green Tech and Sustainability Services**
Solutions for carbon reduction and net-zero goals

Established in 1981, Auden Group is a leading provider of connectivity solutions based in Taiwan. Continuously striving to advance the connectivity industry worldwide, the company provides comprehensive technical and service support in the wireless communication market, spanning antenna design & manufacturing, system-level integration, wireless product testing, laboratory & security, and green energy.

Contact

Phone +886-3-363-1901
Fax +886-3-366-0619

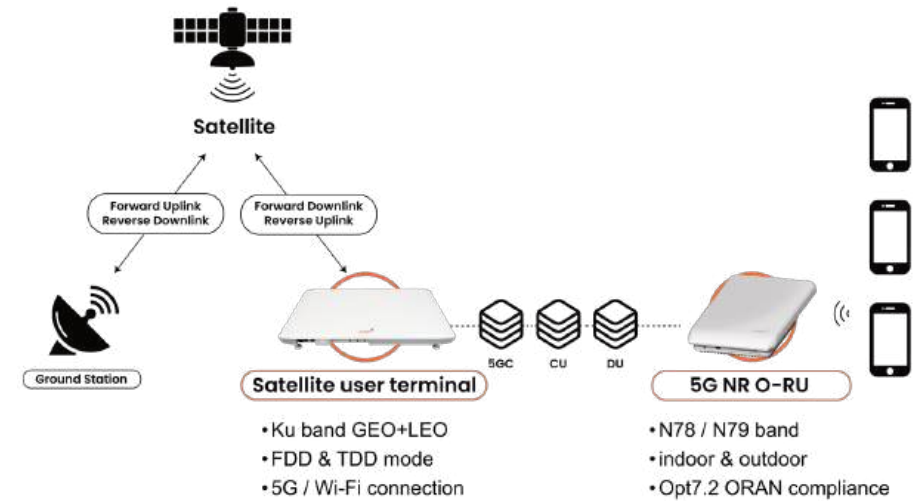
No. 19, Ln. 772, Heping Rd., Dafa Vil,
Bade Dist., Taoyuan City 33463, Taiwan (R.O.C.)

Contact Person

Sampson Duan
Senior Director
Sampson.duan@auden.com.tw

Website

www.auden.com.tw/en/home-en/



Azimech COTM User Terminal

The Azimech XEO COTM User Terminal features 32 x 32 antenna array and 3D beamforming, providing high-performance, multi-orbit connectivity for satellite communications. Ideal for broadband, defense, and unmanned vehicles with its ultrathin, lightweight, modular design.



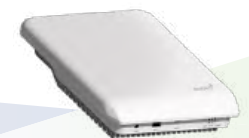
Centauri Compact LEO User Terminal

The Centauri Compact LEO User Terminal offers mobility, small footprint and easy deployment satellite communication with advanced time division beamforming tracking technology. Ideal for IoT, transportation, and emergency services to ensure stable connections in dynamic environments.



5G N78/79 O-RU

Based on 5G O-RAN Opt7.2 specifications, Auden developed a cost competitive N78/79 O-RU reference white box with ARM CPU. It's quickly deployable, integrated with lightweight DUCUs, and supports indoor / outdoor with upto IP65 rating. Equipped with a 4T4R MIMO antenna, it improves signal coverage and offers up to 1Gbps/150Mbps bandwidth efficiency. The interface includes 1Gbps Ethernet and 10Gbps SPF+ connections, and customers can customize M-plane for efficient deployment and management.





Auray Technology Corp.

– O-RAN Certification and Badging Services

O-RAN Certificate, O-RAN IOT Badge, O-RAN E2E Badge

– Security Test Services

3GPP 5G / O-RAN Alliance Security Standard, EU Wireless Device Testing Standard:
Wireless Devices Set common information security requirements (EN18031),
ISO27001 Security Consulting Services

– RIC Test Services

Non-RT RIC Interface Compliance Verification, Near-RT RIC Interface,
Compliance Verification

– Verification Center Inspection and Training Services

Organization-Level Greenhouse Gas Verification and Validation,
Carbon Footprint, Quality Management System Verification

Auray Technology Corporation is a certified OTIC* and security laboratory with ISO 17025. As approved by the O-RAN Alliance, it is the first third-party OTIC laboratory in Asia. We were certified by Taiwan's National Development Council as a "5G SA Network Testing Project".

Our service scope includes O-RAN Alliance Certification and Badge testing, ICT product information security testing, and ISO 27001 consulting services. We provide comprehensive, professional, one-stop testing and verification services.

*OTIC: Open Testing and Integration Centre

Contact

Phone +886-3-286-6271

Fax +886-3-287-6277

7F.-1, No. 286, Sec. 1, Gaotiezhanqian
W. Rd., Zhongli Dist., Taoyuan City

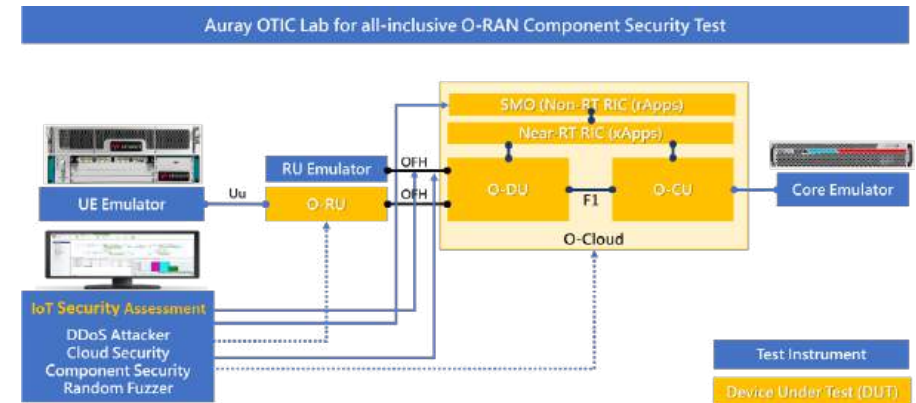
Contact Person

Johnny Wu
Manager

johnny.wu@auray.com.tw

Website

www.auray.com.tw/en/



O-RAN Security Assessment: Automated Testing Demonstration

This demonstration will fully present O-RAN's automated testing platform for its information security assessment through an immersive testing environment. In our professional test field, customers will be able to experience a full-featured security verification setup, demonstrating the perfect integration of automated vulnerability scanning and comprehensive security assessment.

Our real-time test environment builds actual operational O-RAN configurations and conducts real-time security assessments through Keysight's intuitive operation interface. You can observe the process of automated vulnerability detection, protocol fuzz testing of O-RAN interfaces, and real-time identification of potential security risks. Test results will be presented in a visual display interface, with security findings, vulnerability indicators, and CVSS scores displayed in real time through a dynamic dashboard.

In this demonstration, we will provide a detailed tour of the automated testing workflow, demonstrating protocol-specific security testing, O-RAN Alliance specification compliance verification, and the platform's complete vulnerability assessment capabilities. Customers can observe detailed security reports that are automatically generated and learn how the system effectively verifies that O-RAN implementations comply with industry standards.

This demonstration emphasizes both technical excellence and practical application, demonstrating the future vision of creating secure O-RAN deployment through automated testing solutions.



Edgecore Networks Corporation

- Switching solutions for AI/ML applications
- 800G/400G/100G/25G cloud data center solutions
- Community-based SONiC solution for data centers
- Open routers for CSPs, from access and aggregation to core networks
- Enterprise wired and wireless solutions

Edgecore Networks Corporation is a wholly owned subsidiary of Accton Technology Corporation, the leading network ODM. Edgecore Networks delivers wired and wireless networking products and solutions through channel partners and system integrators worldwide for the AI/ML, Cloud Data Center, Service Provider, Enterprise and SMB customers. Edgecore Networks is the leader in open networking providing a full line of open WiFi access points, packet transponders, virtual PON OLTs, cell site gateways, aggregation routers and 1G, 10G, 25G, 40G, 100G, 400G and 800G open networking switches that offer choice of commercial and open-source NOS and SDN software. For more information, visit www.edge-core.com.

Contact

Phone +886-3-563-8888

Fax +886-3-668-6111

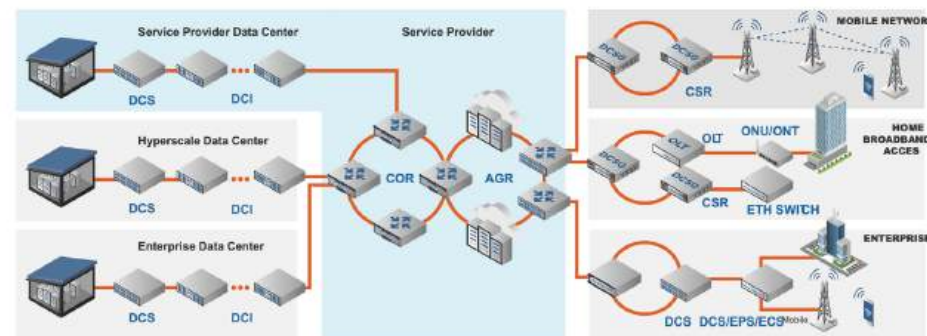
No. 1, Creation Road 3, Hsinchu
Science Park, Hsinchu 30077, Taiwan

Contact Person

sales@edge-core.com

Website

www.edge-core.com



Edgecore's vision is to provide innovative connectivity solutions that allow our customers and partners to accomplish more. Edgecore's mission is to democratize and provide better access to networking technologies through disaggregation and open-source solutions.

Edgecore has introduced disaggregated end-to-end solutions across all network layers, ranging from broadband access, edge computing, and mobile backhaul to edge routing.

- 51.2 Tbps 800G-optimized Ethernet fabrics for AI/ML/HPC workloads with power-efficient, scalable designs
- 14.4 Tbps full-duplex VoQ-based cell fabric DDC network cloud cluster optimized to support AI/ML applications
- 5G Mobile xHaul Networks: 800G disaggregated cell site gateway
- Community-based SONiC solution for data centers
- Multirole-capable aggregation routing solutions: Internet peering, BNG, and edge router
- Optical transponder/muxponder
- Open Wi-Fi 7 and Wi-Fi 6 solutions, and 2.5G multi-management Ultra PoE switch for campus networks
- 10G aggregation switch/router



Groundhog Technologies Inc.

- CovMo™: Geolocation, RAN Analytics, RAN Troubleshooting, RAN Optimization, Subscriber Trace, Reporting, Virtual Drive Testing
- MI-DMP™: Data Management Platform for Operators (for Marketing Intelligence)
- MI-DSP™: Demand Side Platform for Advertisers (for AI Advertising)



Groundhog Technologies is a global leader in the mobile network and user analytics. CovMo™ Geo-Analytics platform enables operators to accurately pinpoint the location and experience of subscribers. The solution is able to mine deep networks to provide user insights and implement proactive solutions across various domains: Network & Operations, Customer Experience, Sales & Marketing, and Digital Services. The company has leveraged its +20 years of hands-on experience working with Telco Data to further enable operators to address the advertising and data monetization opportunity with a plug & play Data Management Platform (DMP) and a Demand Side Platform (DSP).

Contact

Phone +1617-800-9516

108 W. 13th Street, Suite 100,
Wilmington, DE 19801, USA

Zhongshan N. Rd., Sec. 2, No. 42, 2F,
Taipei 104, Taiwan

Contact Person

Alan Hwang
Vice President of Global Sales
alan.hwang@ghtinc.com

Ciprian S. Aionesei
Sales Manager
ciprian@ghtinc.com

Website

www.ghntinc.com



CovMo™ – Geolocation with Subscriber-based Intelligence

Based on breakthrough research in Chaos Theory originating from MIT, Groundhog Technologies presents CovMo™ – our vanguard system for Geolocation, and the mobile operator's preeminent choice for identifying and resolving the multitude of challenges facing customer experience management and network optimization today. CovMo™ is our system for geolocation which analyzes and visualizes both RAN network performance and subscriber experience. Our solution automatically monitors, analyzes and pinpoints subscriber-perceived network issues, such as coverage holes, data throughput, call qualities and other KPIs, geographically, with high resolution, 24/7, in real time. CovMo™ was first to market with innovative leading functionalities, such as distinguishing between indoor-and-outdoor, and moving-and-stationary traffic. CovMo™ highly valued use cases can support network engineering processes, customer service and marketing.

Mobility Intelligence Platform

Groundhog Technologies' Mobility Intelligence Advertising solution applies a combination of Chaos Theory-based Geolocation models and Human Mobility Deep Learning Algorithms to transform raw network data into monetizable assets and generate new revenue streams via programmatic advertising. The Data Management Platform (MI-DMP™) transforms subscribers' mobility, network usage, online and offline behaviors into subscriber insights that advertisers are able to utilize in order to target their desire audiences for optimal campaign results. The Demand Side Platform (MI-DSP™) enables operators to launch their own programmatic mobile advertising services for marketers and advertisers. In utilizing its data via business intelligence and collaborating with digital advertising ecosystem players, mobile network operators can create new revenue streams beyond data, voice and value-added services.



IBASE Technology Inc.

- 1U/2U rackmount network appliances
- uCPE/ SD-WAN appliances
- Edge servers
- Network interface modules

IBASE Technology (TPEX: 8050) specializes in the design and manufacture of robust industrial PC products, delivering high-quality products and excellent service since its establishment in 2000. We carry out manufacturing and quality control at our own facilities in Taiwan that are ISO 9001, ISO 13485, ISO 14001, and ISO 27001 certified. IBASE offers an extensive range of network appliances, including desktop, 1U/2U rackmount systems, edge servers, and uCPE/ SD-WAN appliances that are designed to support a wide array of powerful Intel® and AMD processors. These systems also come with various options for Ethernet modules, inner storage expansion, and redundant power supplies to ensure high availability and serviceability. We also offer ODM customization services, tailoring products to meet customers' specific requirements.

Contact

Phone +886-2-2655-7588
Fax +886-2-2655-7388

Bldg. F, 15F-1, No. 3, Yuan Qu Street,
Nangang, Taipei 11503, Taiwan

Contact Person

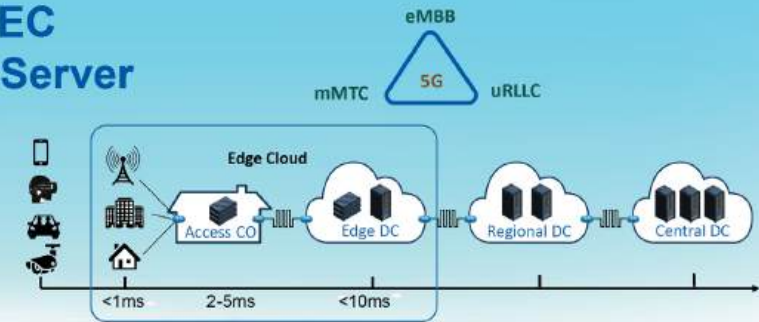
Steven Pai
Senior Director,
Network Product Business Division
sjpai@ibase.com.tw

Website

www.ibase.com.tw



MEC Edge Server



As a leader in the industry, IBASE is committed to delivering cutting-edge solutions that enable businesses to capitalize on the opportunities presented by 5G technology. With our innovative products and extensive experience in network appliances and IoT, we are well-equipped to cater to the evolving needs of the 5G era, empowering businesses to thrive in the rapidly changing landscape of modern networking.

Solution Highlights for INA8505

Multi-access Edge Computing Enterprise 1U Edge Server with Intel® Xeon® D Processor

- Intel® Xeon® D-2700 Processor
- 4x DDR4 DIMMs, Max. 256GB RDIMM or Max. 512GB LRDIMM
- 4x 25GbE SFP28 ports on board
- 2x 2.5" SATA/NVMe hot-swappable HDD/SSD
- Optional for one card: 1x PCI-E (x16) Gen4 single-slot for double FHFL interfaces, passive cooling, up to 120W.
For two cards: 1x PCI-E (x16) Gen4 single-slot + 1x PCI-E (x8) Gen4 FHFL interfaces, passive cooling, up to 75W each
- Optional IPMI 2.0 module
- GPS time synchronization
- Supports SyncE and PTP IEEE 1588



Solution Highlights for INA7605

Rackmount Network Appliance Performance 2U Network Appliance with Dual Intel® Xeon® Scalable Processors

- Dual 5th Gen Intel® Xeon® Scalable Processors
- 16x DDR5 RDIMM, Max. 1,024GB
- Max. 8x NIC modules; Max. 64 GbE ports (Optional)
- Max. 8x 2.5" HDD Swappable
- Optional IPMI 2.0 module
- 1x PCI-E (x16) expansion slot
- 2x 1600-watt redundant power supply



Solution Highlights for INA1607

uCPE/SD-WAN Appliances Desktop uCPE/SD-WAN Network Appliance with Intel® Atom® x7405C Processor

- Intel® Atom® x7405C Processor
- 1x DDR5 SODIMM; Max. 16GB (ECC/non-ECC)
- 4x 2.5GbE RJ45
- 2x GbE RJ45 and 2x GbE SFP
- 1x Mini PCI-E slot
- 2x M.2 slot
- Supports WiFi/WiFi 6, LTE/5G, with up to 4 antennas



Solution Highlights for INA7602

Rackmount Network Appliance Performance 2U Network Appliance with AMD EPYC 9004

- AMD EPYC 9004 Series
- 12x DDR5 RDIMM; Max. 384GB
- Up to 8x IBN Module or 4x 3.5" HDD with 4x IBN Module
- 2x 2.5" Internal HDD
- 1x PCI-E FH/FL
- Supports Broadcom RAID controller card 9560-16i



Industrial Technology Research Institute

- Technology Transfer
- Joint Research
- Testing and Verification
- Pilot Production and Value-added Services
- Prototyping & Manufacturing

Founded in 1973, Industrial Technology Research Institute (ITRI) is Taiwan's largest and one of the world's leading high-tech applied research institutions. The organization is committed to utilizing its R&D results to drive industrial development, create economic value, and enhance social well-being. In response to the world's new challenges, ITRI has launched the 2030 Technology Strategy & Roadmap to address market demands and global trends. Meanwhile, ITRI is dedicated to commercializing R&D achievements, cultivating exceptional talents, and providing comprehensive industrial services and business consultancy. In particular, Division for Intelligent Network Applications & Systems at ITRI's Information and Communications Research Laboratories (ICL) concentrates on B5G/6G research and development, including private network planning, network management, and advanced technologies such as Joint Communication and Sensing (JCAS)/Integrated Sensing and Communication (ISAC), and AI-driven network optimization. By leveraging these new technologies, the division has comprehensive capabilities to create more suitable applications for next-generation networks.

Contact

Phone +886-3-582-0100
Fax +886-3-582-0045

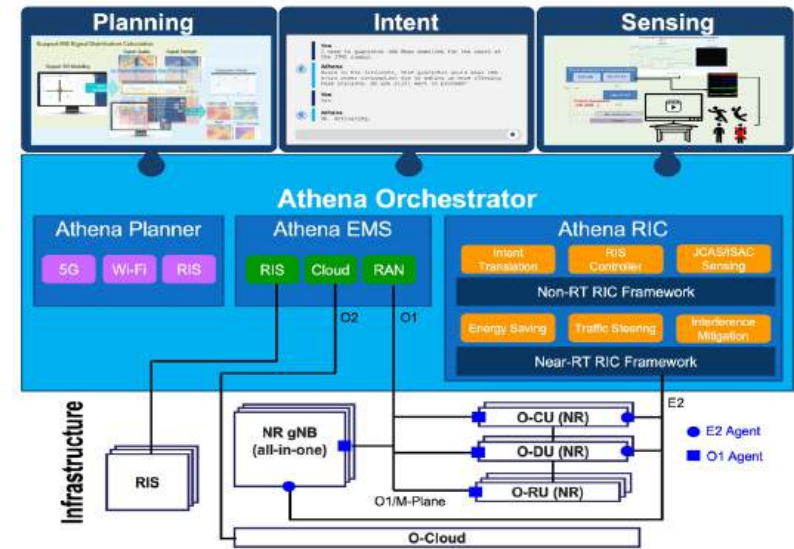
195, Sec. 4, Chung Hsing Rd., Chutung,
Hsinchu, 310401, Taiwan, R.O.C.

Contact Person

Yao-Jen Tang
Technical Manager
yjtang@itri.org.tw

Website

www.itri.org.tw



ITRI's Athena Orchestrator is a cutting-edge, comprehensive network management solution with intent, planning, and sensing capabilities. Leveraging AI/ML, Athena Orchestrator introduces groundbreaking intent-based networking capability, enabling network management tasks to be executed through intuitive, human-like dialogue. Additionally, signal simulation and AI-assisted site planning can reduce network deployment costs. The network management system, integrated with sensing technology, can transform environmental information into enrichment data, offering more insights for network management decision-making.

This innovative platform offers a full suite of services, spanning network planning, deployment, optimization, and maintenance. Athena Planner, a network site survey tool, simulates 5G and Wi-Fi network signals by considering environmental obstacles and emerging technologies like Reconfigurable Intelligent Surfaces (RIS). Athena EMS controls base stations and their deployment resources through O-RAN's O1 and O2 interfaces, ensuring the basic FCAPS management of private networks. Athena RIC, powered by customizable rApps and xApps, delivers intelligent solutions tailored to diverse network scenarios. Additionally, Athena Sensing, utilizing Joint Sensing and Communication (JSAC) and Integrated Sensing and Communication (ISAC) technologies, provides advanced sensing capabilities to enhance the effectiveness of RIC applications.

At MWC 2025, ITRI will showcase Athena Orchestrator's ability to transform network management through intent-based automation, making network operations simpler and more automated. By understanding and responding to user-defined objectives, Athena Orchestrator finds appropriate rApps/xApps (e.g., energy saving and interference mitigation) to fulfill user intent and simplifies the following complex network operations. Our solution also strongly supports pre-6G advancements, including JCAS/ISAC and RIS technologies, transforming the network into a sensor and enhancing network performance and user experience with low-power and cost-effective RIS.

Having earned awards like the SCF Awards 2022 and Edison Gold Medal 2023, Athena Orchestrator exemplifies ITRI's commitment to future connectivity. Visit us to learn how Athena Orchestrator can transform your network strategy.

Industrial Technology Research Institute

- Preliminary research services and evaluation for POC (Proof of Concept)
- Technology Transfer (RAN Turnkey solution)
- R&D Collaboration
- Industrial Consultancy Services
- Validation Instruments

Founded in 1973, Industrial Technology Research Institute (ITRI) is Taiwan's largest and one of the world's leading high-tech applied research institutions. The organization is committed to utilizing its R&D results to drive industrial development, create economic value, and enhance social well-being. In response to the world's new challenges such as the 2050 net zero target, ITRI has launched the 2030 Technology Strategy & Roadmap to address market demands and global trends.

Meanwhile, ITRI is dedicated to commercializing R&D achievements, cultivating exceptional talents, and providing comprehensive industrial services and business consultancy. Its open lab and incubator have fostered emerging industries and startups including well-known names such as UMC and TSMC.

Contact

Phone +886-3-582-0100
Fax +886-3-582-0045

195, Sec. 4, Chung Hsing Rd., Chutung,
Hsinchu, 310401, Taiwan, R.O.C.

Contact Person

Jen-Feng Huang
Manager
JenFengHuang@itri.org.tw

Website

www.itri.org.tw



3GPP NTN for Multiple Orbit Satellite Technology

ITRI RAN Research Team has consistently been at the forefront of NTN technology development. In 2022, the team collaborated with MediaTek to validate the feasibility of direct satellite-to-NTN connectivity. In 2024, they jointly developed B5G technology with MediaTek, achieving the first conceptual validation of NTN in the Ku band. By the end of 2024, the ITRI team unveiled multi-orbit technologies, conducting field validations for both low-earth orbit (LEO) and geostationary orbit (GEO) satellites.

In collaboration with CHTL, the team extended the 3GPP capabilities of CHT's ST-2 satellite. This partnership with the Chunghwa Telecom Research Institute (CHTL) and Chunghwa Telecom (CHT) successfully completed the world's first large-bandwidth field validation on the ST-2 satellite, enabling satellite support for 3GPP protocols.

3GPP TN for Next Generative RAN Technology

ITRI RAN Research Team began focusing on public network technology development in 2024, becoming the first in Taiwan to support 32T32R Massive MIMO RAN. Simultaneously, the team developed a Cloud-Native RAN, which features critical functionalities such as network slicing, high UE density, and conditional handover.

They also advanced pre-6G technology, integrating dApps (real-time RIC) with AI to achieve autonomous modulation and adaptive control. In parallel, the cloud hardware platform was expanded from its original x86-based architecture to include support for ARM and Nvidia-based GPUs. Additionally, the ITRI RAN Research Team has commenced preliminary development of 6G AI RAN.



NEXCOM International Co., Ltd.

- 5G Infrastructure Solutions
- Edge AI and Cloud Solutions
- SD-WAN Solutions
- Cyber Security Solutions
- OT Security Solutions

Founded in 1992 and headquartered in Taipei, Taiwan, NEXCOM integrates its diverse capabilities and operates six global businesses, including the Network and Communication Solutions (NCS) unit.

NCS focuses on the latest network technology and helps to build reliable network infrastructure, by delivering professional design and manufacturing services for customers all over the world.

NCS's platforms are widely adopted in Cyber Security, OT Security, SD-WAN, SASE, Load Balancing, 5G uCPE, Edge AI, Storage, NVR, and other network applications for businesses of all sizes.

Contact

Phone +886-2-8226-7786
Fax +886-2-8226-7782

9F, No.920, Zhongzheng Rd., Zhonghe District,
New Taipei City, 23586, Taiwan, R.O.C.

Contact Person

Terry Liu
Senior Sales Manager
terry_liu@nexcom.com.tw

Website

www.nexcom.com



AI-enabled 5G Infra Product Portfolio

NEXCOM



5G uCPE for SD-WAN & FWA Applications

Multiple choice of desktop 5G uCPE of different costs and performances, ranging based on CPU core count, power consumption, port counts, and wireless connectivity options.

- 1-8 CPU cores
- 1/2.5/10GbE LAN ports
- up to 14 LAN ports
- Wi-Fi 6/7, 5G FR1/FR2

OT Security Solutions for Manufacturing X

Fanless rugged DIN rail boxes for harsh industrial environments and mission-oriented applications: wired and wireless security gateways, and high-density security switches.

- 2-4 CPU cores
- Out-of-band management
- Ethernet bypass
- Wi-Fi 6/7, 5G FR1

Smart Edge Device for AI Workloads

A selection of 1U rackmounts powered by Intel and Marvell Arm Neoverse N2 v9 solutions, for dynamic resource allocation for AI processing, and network capacity at the network Edge.

- up to 16 CPU cores
- AI card adoption
- up to 4 LAN modules slots
- Wi-Fi 6/7, 5G FR1

CU/DU Servers for Core Network Operations

High-performance appliances for handling Big Data and heavy workloads. Adoption of a wide range of LAN modules with up to 200GbE per slot and bypass for 5G network security.

- up to 52 CPU cores
- PCIe Gen 4/5 interface
- up to 2.6TB Ethernet connectivity
- up to 8 LAN modules slots



Learn More

<https://www.nexcom.com/Products/network-and-communication-solutions>



TAILYN

Built Rugged.

Tailyn Technologies, Inc.

- Design, manufacture and network solution service
- Industrial Communication and Networking
- Industrial PC
- Automotive Electronics
- Semiconductor Equipment

Tailyn is a company dedicated to design and manufacturing, specializing in solving complex manufacturing engineering challenges in harsh environments and high-precision industrial applications.

Challenges are prospects that evolve from the future, for the purpose of fulfilling the smart life TAILYN has accumulated 43 years of devoted focus in industrial applications, telecommunications, telematics and other precision equipment domains, providing comprehensive, integrated solutions through design, pilot run, mass production, test engineering.

At our core, we emphasize strategy, determination, and humanity. This approach allows us to not only achieve our customers' missions but also excel in integrating resources at all levels, continuously learning and evolving, and demonstrating a strong sense of responsibility. Moreover, we prioritize empathy and understanding in all our interactions. Tailyn is committed to delivering innovative solutions while upholding these core values.

Contact

Phone +886-3-322-2201

Fax +886-3-322-2563

No. 10, Rong-An Rd., Luzhu Dist.,
Taoyuan City 338028, Taiwan, R.O.C.

Contact Person

Sharlene Liu

Sales Director

sharleneliu@tailyn.com.tw

Website

www.tailyn.com.tw



AI+ to Connect Future



TAILYN provides trusted, Telecom Infra Project (TIP) certified industrial network solutions with applications across diverse verticals, including industrial 5G networks, factory automation, power utilities, surveillance systems, and transportation. With success stories spanning the globe, our robust network infrastructure serves as the foundation for building long-term partnerships with our customers.

Time-Sensitive Networking (TSN) is a critical component of industrial private 5G networks, ensuring precise and predictable data delivery essential for real-time control and synchronization in industrial environments. Protocols like CC-Link, PROFINET enable high-speed, synchronized communication across devices, while OPC-UA supports secure and standardized data exchange across platforms. Additionally, 5G ORAN transport networks extend TSN capabilities by providing flexible deployments, overcoming traditional cabling constraints, and ensuring low latency.

To streamline complex network configurations, TAILYN incorporates AI-driven solutions, significantly reducing setup time and accelerating issue resolution, thereby enhancing network responsiveness and reliability. AI features such as AI VLAN, AI QoS, AI PoE, and AI Extend further optimize network segmentation, quality of service, power distribution, and coverage extension. Through collaboration with the Telecom Infra Project, TAILYN is driving industrial network innovation, with AI algorithms embedded in TSN solutions to optimize network traffic management, predictive maintenance, and anomaly detection, minimizing operational downtime.

TAILYN's TSN Ethernet switches dynamically adapt to changing network conditions, proactively addressing potential bottlenecks to ensure the real-time transmission of critical control data. Redundancy protocols like PRP (Parallel Redundancy Protocol) and HSR (High-availability Seamless Redundancy) further enhance resilience, guaranteeing uninterrupted data flow even in the event of network failures. Furthermore, our Gateway with TSN Translator, integrated with 5G and augmented by AI capabilities, enables seamless interaction between 5G and TSN networks, facilitating intelligent data processing and decision-making in complex industrial environments.

TAILYN is committed to advancing automation and smart data processing through AI, driving the future of industrial network management and enabling smarter, more efficient industrial solutions for tomorrow's factories and infrastructure.



Ufi Space Co., Ltd

- Design and provide 5G open networking core and edge routers
- Design and provide 5G open networking access and aggregation routers
- Design and provide 5G private network timing and transport solutions
- Design and provide data center switches and routers

UfiSpace is the leading provider of end-to-end open networking solutions that enhance connectivity for telecommunication companies, cloud service providers and data centers. Our passion and dedication towards customer service and engineering excellence has brought us to the forefront of 5G technology innovation. We make it our mission to help our customers efficiently adopt open and disaggregated network architectures to empower them with agility and flexibility in order to address the evolving needs of their consumer and enterprise customers. UfiSpace is committed to accelerating industry growth and transformation while striving to promote sustainable collaborations with our supply chain, solution partners, customers and within UfiSpace ourselves.

Contact

Phone +886-2-7730-1188

10F., No. 300, Jianguo 1st Rd.,
Xinzhuang Dist., New Taipei City
242047, Taiwan

Contact Person

Will Chang
Senior Technical Marketing Manager
will.chang@ufispace.com

Website

www.ufispace.com



Powering the 800G Networking Future



As a leader in open networking, UfiSpace delivers end-to-end solutions for telecommunications, cloud service providers, and data centers, supporting next-generation 5G, AI, and 800G networking needs.

Access Solution

A comprehensive range of access switches from 1G to 400G, featuring compact, temperature-hardened designs, OpenZR+, and fanless options, meets diverse field requirements to support seamless connectivity.

Aggregation & Edge Solution

Flexible configurations from 1G to 800G make our aggregation and edge solutions ideal for metro aggregation, BNG, and provider edge applications, meeting the high-capacity demands of various network architectures.

Core Solution

UfiSpace's next-generation DDC core solution provides 800G interfaces with up to 1843 Tbps switching capacity, the ultimate choice for high-scale AI/ML interconnectivity and data-intensive environments.

AI & Data Center Solution

Our AI & data center portfolio covers enterprise, edge, and hyperscale environments with support for SONiC and commercial NOS options, offering integration-ready solutions for complex data center demands.

Visit our stand to discover how UfiSpace's advanced platforms can empower your network to embrace the future of 800G networking and beyond.

This image shows a single sheet of white paper with horizontal ruling lines. The lines are evenly spaced and run across the width of the page. There are no margins, text, or other markings on the paper.

ADVISORS

MOEA IDA

EVENT PARTNER



ORGANIZER



CO-EXHIBITORS

