

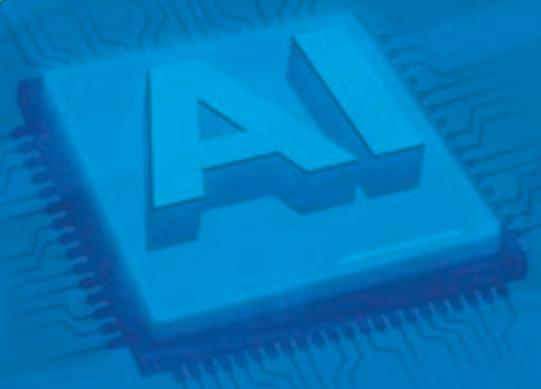


# Senao Networks

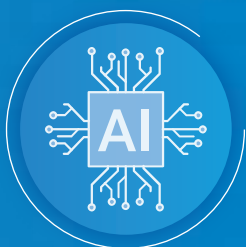


## AI PC

- Personal Intelligent Agent with natural interaction and personalized LLM integration
- Tailored knowledge base for unique user needs
- Advanced heterogeneous computing with CPU, GPU, and NPU support
- Open ecosystem for AI application development
- Robust privacy and security protection



## Applications



Artificial  
Intelligence



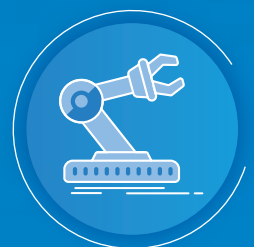
High-performance  
Computing



Deep  
Learning



Data  
Analytics



Smart  
Manufacturing


## Specifications

CPU	Intel® Arrow Lake-S, 65W/35W, iNPU
PCH Chipset	Intel® 800 Q Series
GPU Expansion	PCIe Gen5 x8 L/P single slot (option)
Memory	64GB DDR5-5600 MT/s (2 x 32GB SODIMM)
Storage	2 x NVMe Gen4 SSD - M.2 2280 x 2 or - M.2 2280 x1 + 2242 x1
Security / TPM	TPM2.0, FIPS 140-3 compliance
Front Side	1 x Power Button
Rear Side	1 x DC in 1x Kensington Lock (reserved)
Peripherals Interface	1 x Audio Combo Jack 1 x USB 3.2 Gen 1 (Type C) 4 x USB 3.2 Gen 1 (Type A) 1 x RJ45 1/2.5Gbps Ethernet Port 1 x HDMI 2.1/12G port 1 x DP2.0 port
Wireless Technology	1 x WiFi 7 and BLE v5.4 wireless card
Power Supply	150W external AC power adapter
Dimensions (W X D X H, L)	179.5 x 240 x 44 mm, 1.9L


## Dimension Details



 Website: [www.senaonetworks.com/en](http://www.senaonetworks.com/en)

 TEL: +886-3-3289289

 Mail: [inquiry@senaonetworks.com](mailto:inquiry@senaonetworks.com)

 FAX: +886-3-3979663



 Senao Networks

[www.senaonetworks.com/en](http://www.senaonetworks.com/en)

 Address: No. 500, Fuxing 3rd Rd., Hwa-Ya Technology Park, Guishan Dist., Taoyuan City 333001, Taiwan