



Enabling complex industrial use cases through enhanced connectivity



Smart manufacturing

- Digital twin for remote diagnostics and improved planning via what-if scenarios
- Real-time operational visibility of plant operations



Connected worker

- AR-based inspection/remote expert assistance for the field engineers
- Immersive (VR) solutions for trainings/ demos



Mining

- Intelligent worker safety solution
- Real-time mining equipment monitoring across open pit and underground



Smart warehouses

- Real-time asset/inventory tracking
- LiDAR based solution for storage/ retrieval



Ports

- Predictive maintenance of equipment/machines
- Intelligent video based perimeter security/theft prevention solutions



Compliance & Sustainability

- IoT-based real-time environmental monitoring for GHG emissions
- Intelligent public safety solutions



**Your trusted partner
for private 5G innovation**



Empowering industries by solutioning wide array of tailored use cases

Value achieved: Automation use cases*

Real-time operational visibility of all manufacturing operations for a leading Automotive

~65K quality parameters tracked in real time 50+ robots and machines connected
~30% downtime reduction

🛡️ 99.999 % reliability

Digital twin technology enabling remote diagnostics and enhanced planning capabilities for aerospace applications

Higher yield rate Improved operational decision making

🛡️ 99.999 % reliability

🕒 < 25 ms latency

VR workforce training boosting efficiency and productivity for a global energy leader

15% - 20% improvement in employee productivity

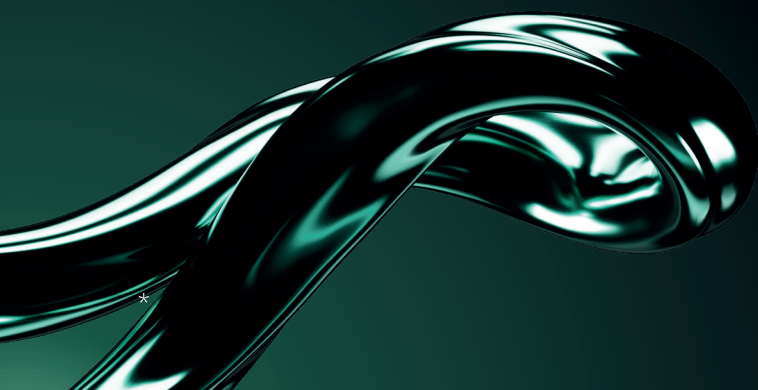
🛡️ 99.999 % reliability

⬆️ ~100 Mbps on the DL

Real time asset tracking for a global beverages leader

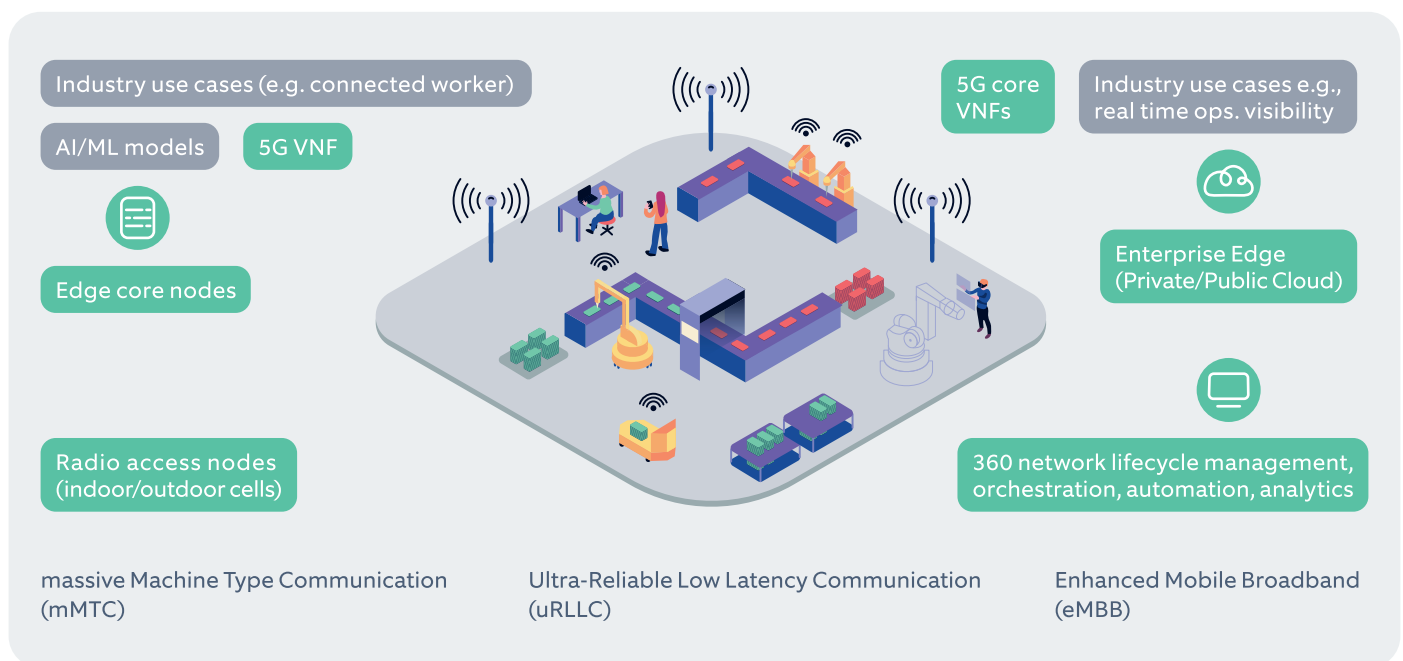
30% reduction in pallet cost Improved visibility in supply chain

🛡️ 99.999 % reliability





Fast forwarding your Industry 4.0 transformation with our IIoT accelerators



- 01 Agent onboarding & asset management
- 02 Data collection & storage
- 03 Connectors (MQTT, OPCUA,...)
- 04 Cloud connectors (AWS, Azure, GCP...)
- 05 Edge gateway – OTA update
- 06 Data pre-processing & analytics
- 07 Alerts and notifications
- 08 Asset control
- 09 Raw data visualization
- 10 Tenancy
- 11 Basic digital twin
- 12 Global configuration manager
- 13 TCP connector
- 14 User management
- 15 SMB connector
- 16 Anomaly detection (pre-built ML models)



18,000+
People



27+
Years



1000+
Customers



38
Countries



Publicly listed
SDAX and TecDAX

Why us

- 1 Deep functional expertise across different industry verticals to build the right use case application
- 2 Rich experience of offering solutions across cellular (5G/4G) and non-cellular connectivity technologies
- 3 Experts in critical technologies: 5G, Edge, AI/ML, VR/MR, IoT, Cloud and more
- 4 Strong system integration capabilities

Selected partners*



Airspan

Druid



Caring is our superpower



Client-centric



Agile



Responsible



Intelligent



Non-hierarchical



Global

Nagarro, a global digital engineering leader, helps clients become fluidic, innovative, digital-first companies and thus win in their markets. The company is distinguished by its entrepreneurial, agile, and global character, its CARING mindset, and its Fluidic Enterprise vision.

Let's talk: Presales-Telecom@nagarro.com or visit us at www.nagarro.com.

*Non-exhaustive list